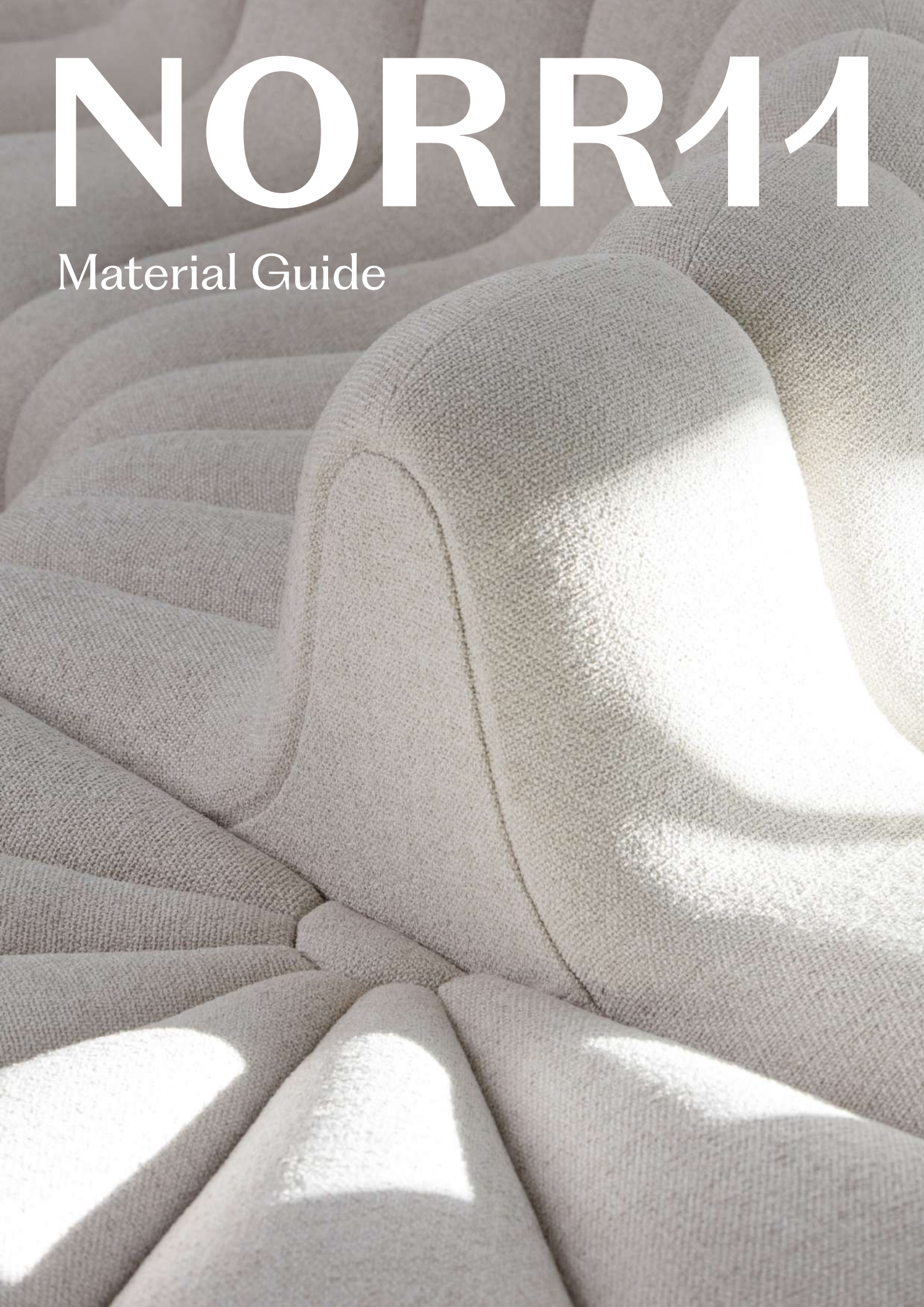


# NORR11

Material Guide



## CONTENTS

### OUR COLOR CURATION

Gray Haze	4
Sepia Tone	6
Warm Sunlight	8
Moorland Greens	10
Blue Delight	12

### FABRICS

CAT 0	
Grain	14
Cura	18
Chili	22
Step Melange	26
Megan	30
CAT 1	
Mumble	34
Remix 3	38
Fame	42
CAT 2	
Barnum	46
Breeze Fusion	50
Canvas 2	54
CAT 3	
Fiord 2	58
Hallingdal 65	62
Steelcut Trio 3	66
Savanna	70
Zero	72
CAT 4	
Moss	74
Safire	76
Baru	78

### OUTDOOR FABRICS

Sunbrella Savane	80
------------------	----

### LEATHERS

Our Leather Curation	82
----------------------	----

### CAT I

Ultra	84
Ultra Crib 5	88
Matara (faux)	90

### CAT II

Nuance	94
Flux	96
Envy	98

### CAT III

Dunes	100
Terra	102
Spectrum	104

### CAT IV

Sheepskin	110
-----------	-----

### WOOD

112

### METAL

114

### POLYPROPYLENE

116

### STONE & CONCRETE

118



# GRAY HAZE



# GRAY HAZE

Nature's misty mornings and urban twilight hours come alive with the mesmerizing interplay of muted grays. Comprising various shades of gray tinged with the faintest hint of other hues, the Gray Haze nuances effortlessly blend into monochromatic schemes or find harmony with other colors. A subtle and timeless palette that evokes a sense of calm, lending a touch of elegance to any space.



BARNUM 010



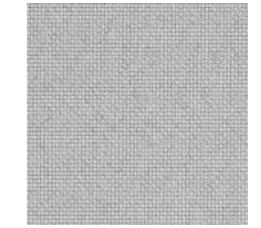
CHILI 60116



MUMBLE 010



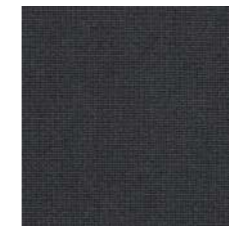
STEP MELANGE 60345



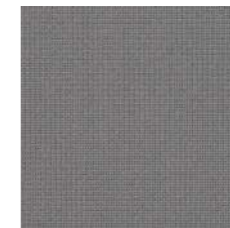
CURA 60000



CURA 60110



FAME 60019



FAME 60078



REMIX 3 133



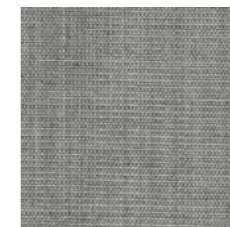
REMIX 3 126



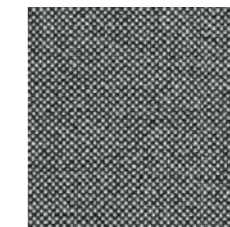
GRAIN 60320



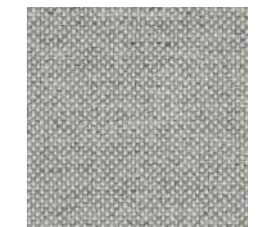
MEGAN 27



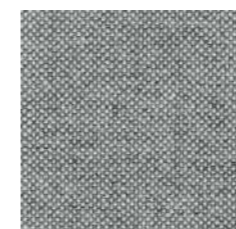
CANVAS 2 124



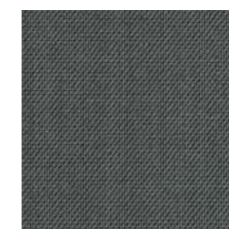
HALLINGDAL 65 126



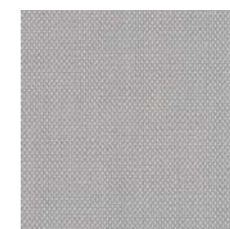
HALLINGDAL 65 110



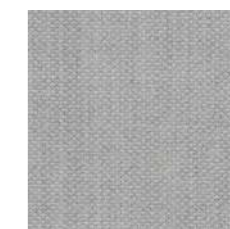
HALLINGDAL 65 116



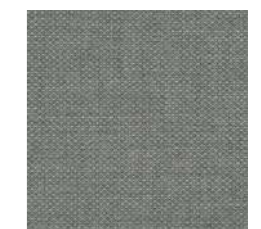
STEELCUT TRIO 153



STEELCUT TRIO 105



FIORD 2 121



FIORD 2 151



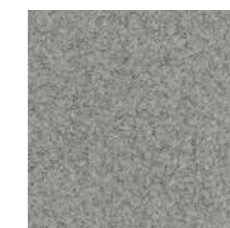
ZERO 0016



SAFIRE 008



MOSS 016



BARU 0120

NORR11



# SEPIA TONE



# SEPIA TONE

Sepia tones are probably most known for being utilized in various forms in old photography, evoking a sense of familiarity and warmth. This color palette imparts a cozy and welcoming atmosphere in the rooms it inhabits, while its versatility allows it to blend harmoniously with other hues and textures. Sepia Tones adds a sense of sophistication to the overall decor, while the timelessness of the palette ensures its rightful place for generations to come.

NORR11



BARNUM 024



CHILI 61174



MUMBLE 026



STEP MELANGE 61286



REMIK 3 242



SAVANNA 0122



CANVAS 2 224



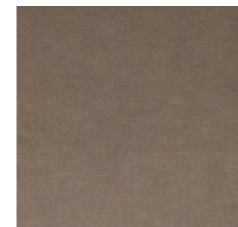
HALLINGDAL 65 200



HALLINGDAL 65 220



STEELCUT TRIO 3 236



MEGAN 26



FIORD 2 271



ZERO 0001



ZERO 0009



ZERO 0012



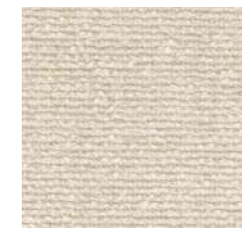
SAFIRE 0014



MOSS 0019



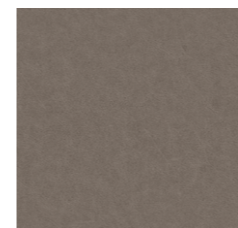
MOSS 0020



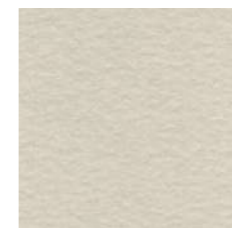
MOSS 0004



SPECTRUM MINERAL 30160



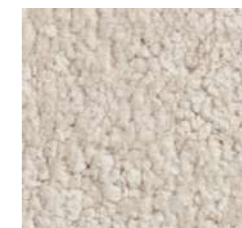
DUNES STONE 21010



BARU 0200



SHEEPSKIN SAHARA



SHEEPSKIN MOONLIGHT



# WARM SUNLIGHT



# WARM SUNLIGHT

Warm Sunlight reminisces the sun's gentle glow as it bids farewell to the day. Inspired by the golden hour of a setting sun, the color palette exudes a mesmerizing allure that captivates the senses and invites us to revel in the beauty of the moment. The palette embraces an array of colors that, like rays of sun, dance gracefully together, creating a sense of delight and tranquility while inviting us to indulge in the furniture it dresses with golden hues.

NORR11







# MOORLAND GREENS

Imagine standing atop a rolling moorland, enjoying the view of a verdant landscape. Moorland Greens is a captivating color palette that embraces the essence of nature's beauty, reflecting the shades of green in the soft mosses, ferns, and grasses that blanket the terrain. This rich and sophisticated hue combines the earthy tones of green with subtle undertones of gray and hints of brown, creating a harmonious and timeless palette that exudes a sense of serenity and connection.

# MOORLAND GREENS



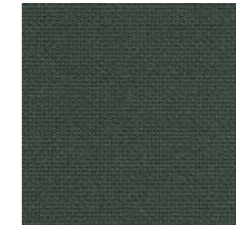
CHILI 68197



MUMBLE 007



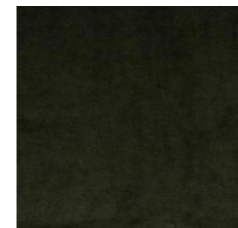
STEP MELANGE 68161



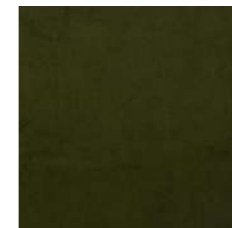
CURA 68182



CURA 68261



MEGAN 104



MEGAN 13



GRAIN 68243



GRAIN 68260



FAME 68148



REMUX 3 933



REMUX 3 982



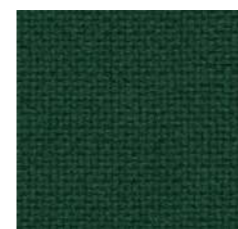
REMUX 3 942



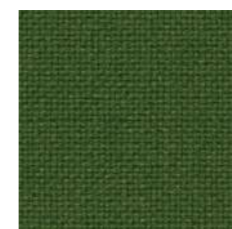
CANVAS 2 974



CANVAS 2 946



HALLINGDAL 65 944



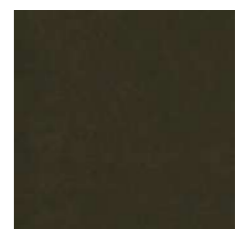
HALLINGDAL 65 960



MOSS 0001



SAFIRE 0005



ENVY OLIVE 20324



STEELCUT TRIO 3 946



STEELCUT TRIO 3 966



BARU 0980

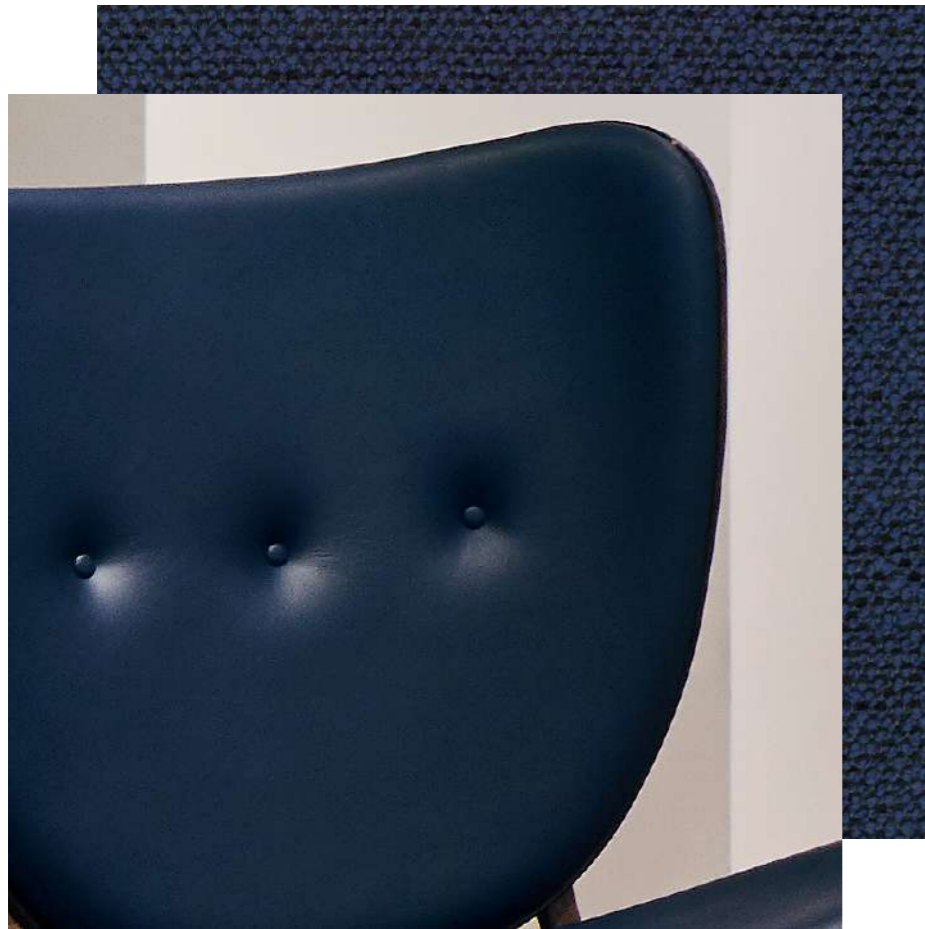


BARU 0950

NORR11



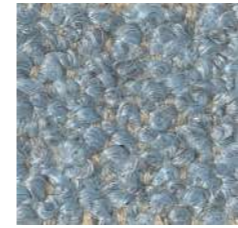
# BLUE DELIGHT



# BLUE DELIGHT

Found primarily in the vast expanse of the sky and the boundless depths of the sea, blue's rarity in nature has endowed it with an aura of exclusivity and sophistication throughout history. The Blue Delight palette encompasses intriguing textures in a harmonious blend of light and dark hues evoking a sense of joy and contemplation. Seamlessly blending with both warm and cool tones, the palette allows for endless combinations and unparalleled aesthetic appeal.

NORR11



BARNUM 015



BARNUM 019



MUMBLE 032



CURA 66170



CURA 66169



FAME 66061



FAME 66071



GRAIN 66231



REMI X 3 836



REMI X 3 823



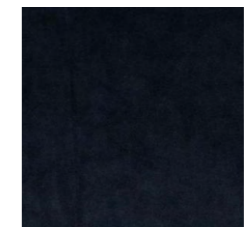
REMI X 3 743



MEGAN 110



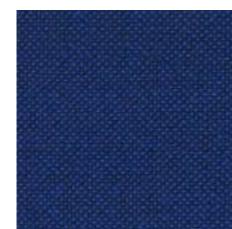
MEGAN 52



MEGAN 2



CANVAS 2 786



HALLINGDAL 65 754



HALLINGDAL 65 764



FIORD 2 672



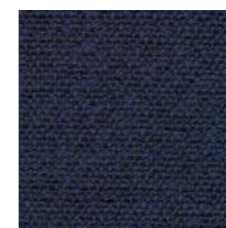
FIORD 2 771



STEELCUT TRIO 3 796



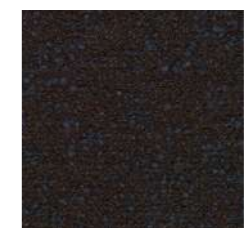
MOSS 0009



SAFIRE 0011



ZERO 0007



ZERO 0010





# GRAIN

Grain is a post-consumer recycled polyester bouclé fabric and a celebration of the perfectly imperfect. It embraces a flawed beauty and asymmetric aesthetic inspired by the irregular textures of nature and the grained cement surfaces in contemporary architecture. With its fine texture and understated elegance, Grain redefines the bulky bouclé and gives it a contemporary, sophisticated vibe.

<b>Supplier</b>	Gabriel
<b>Composition</b>	92% Post-Consumer Polyester, 8% Polyester
<b>Martindale</b>	100.000
<b>Flammability</b>	BS EN 1021 1&2 Cigarette and Match, BS EN 1021-1 Cigarette, CA TB 117-2013
<b>Environment</b>	STANDARD 100 by OEKO-TEX®

# GRAIN BY GABRIEL

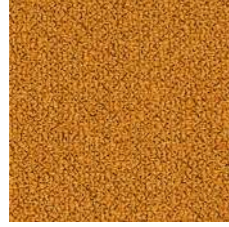


NORR11





GRAIN 61256



GRAIN 62016



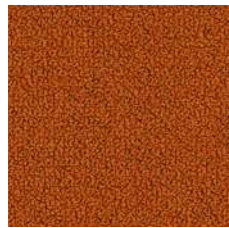
GRAIN 62121



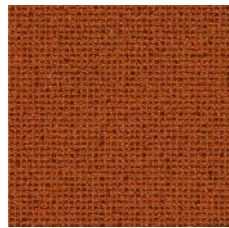
GRAIN 62122



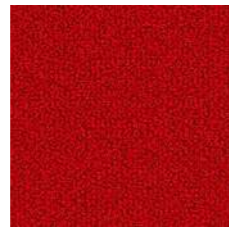
GRAIN 62123



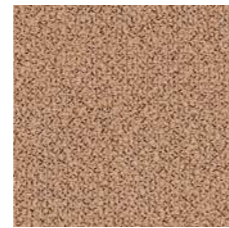
GRAIN 63117



GRAIN 63118



GRAIN 64041



GRAIN 64249



GRAIN 64250



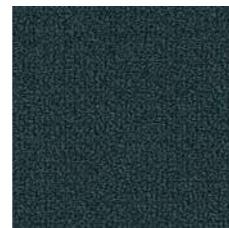
GRAIN 64251



GRAIN 66216



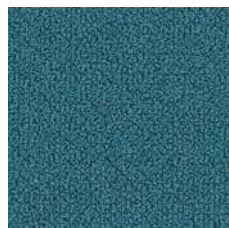
GRAIN 66231



GRAIN 66232



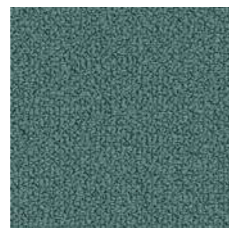
GRAIN 66233



GRAIN 66234



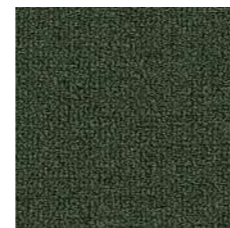
GRAIN 66235



GRAIN 66236



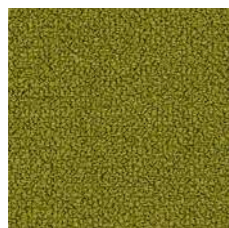
GRAIN 66237



GRAIN 68155



GRAIN 68243



GRAIN 68257



GRAIN 68258



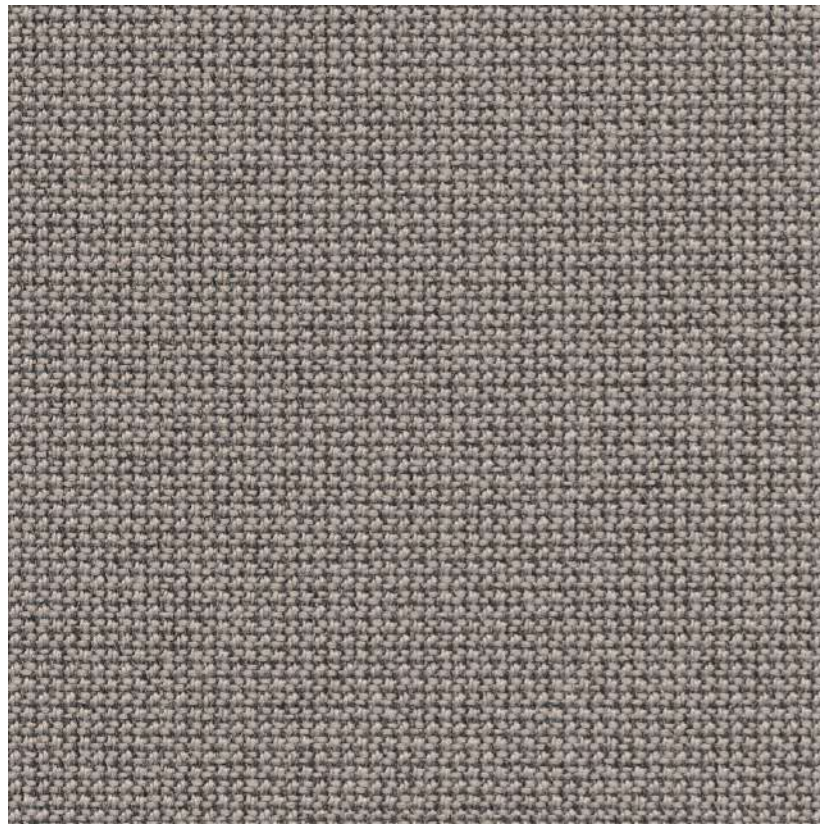
GRAIN 68259



GRAIN 68260







CURA 60112      CURA 60110      CURA 61168      CURA 60109      CURA 61169



CURA 66166      CURA 60111      CURA 60019      CURA 62084      CURA 62083



CURA 62082      CURA 63078      CURA 63012      CURA 64196      CURA 64013



CURA 64197      CURA 64195      CURA 64194      CURA 65105      CURA 66169



CURA 68187      CURA 68186      CURA 66167      CURA 66165      CURA 66170

# CURA

Cura is a multi-purpose, two-coloured upholstery fabric made from 98% post-consumer recycled polyester. Use Cura for office furniture or lounge seating to transform workplaces into homey interiors.

<b>Supplier</b>	Gabriel
<b>Composition</b>	98% Recycled Polyester, 2% Polyester
<b>Martindale</b>	100.000
<b>Flammability</b>	BS EN 1021 1&2, CAL 117
<b>Environment</b>	STANDARD 100 by OEKO-TEX®, EU Ecolabel

NORR11





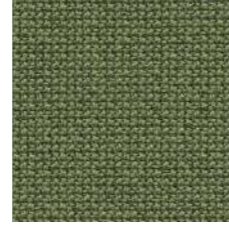
CURA 67084



CURA 68183



CURA 68182



CURA 68181



CURA 68180



NORR11



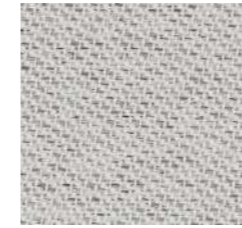


# CHILI

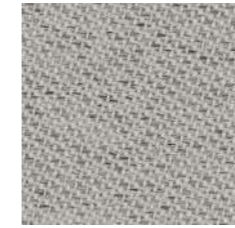
Chili is a pioneering upholstery fabric distinguished by its fusion of sustainable materials and exceptional fire resistance. Made from 100% post-consumer recycled flame retardant polyester, the fabric sets new environmental standards for fire retardant fabrics.

<b>Supplier</b>	Gabriel
<b>Composition</b>	100% post-consumer recycled polyester fr (fr inside the fiber)
<b>Martindale</b>	60.000
<b>Flammability</b>	BS EN 1021 1&2, CA TB 117-2013, BS 5852 Crib 5
<b>Environment</b>	STANDARD 100 by OEKO-TEX®, EU Ecolabel

# CHILI BY GABRIEL



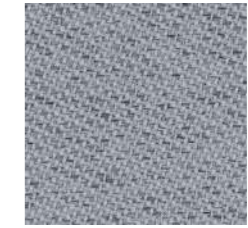
CHILI 60114



CHILI 60115



CHILI 61174



CHILI 60117



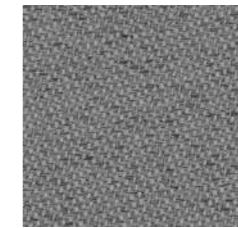
CHILI 60116



CHILI 61172



CHILI 60081



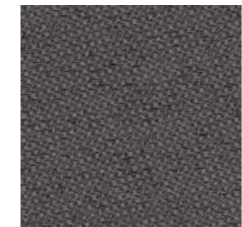
CHILI 60083



CHILI 61175



CHILI 60999



CHILI 61171



CHILI 62086



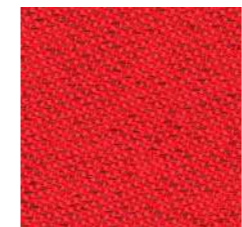
CHILI 63093



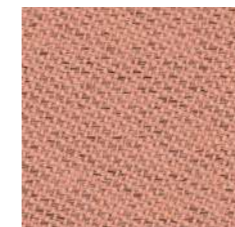
CHILI 64199



CHILI 63090



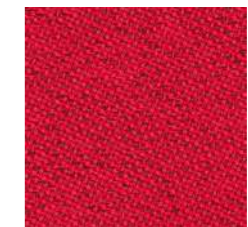
CHILI 64200



CHILI 63092



CHILI 61173



CHILI 64201



CHILI 65111



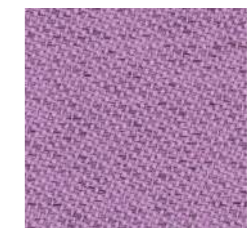
CHILI 63099



CHILI 64202



CHILI 64203



CHILI 65107



CHILI 66172

NORR11





CHILI 64197



CHILI 65108



CHILI 66173



CHILI 64198



CHILI 65109



CHILI 66171



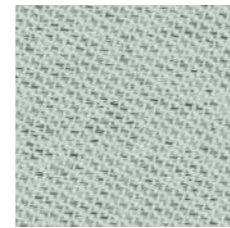
CHILI 65110



CHILI 66174



CHILI 66175



CHILI 68191



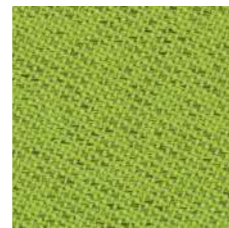
CHILI 68195



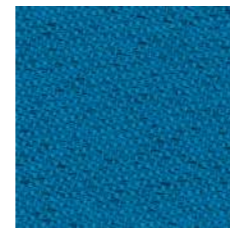
CHILI 66176



CHILI 68192



CHILI 68196



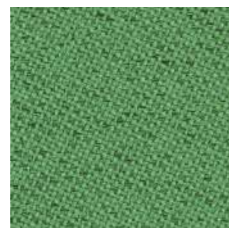
CHILI 67085



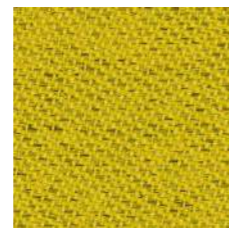
CHILI 68197



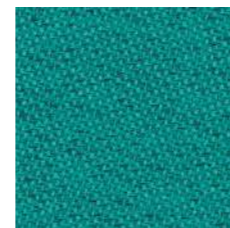
CHILI 68189



CHILI 68193



CHILI 62085



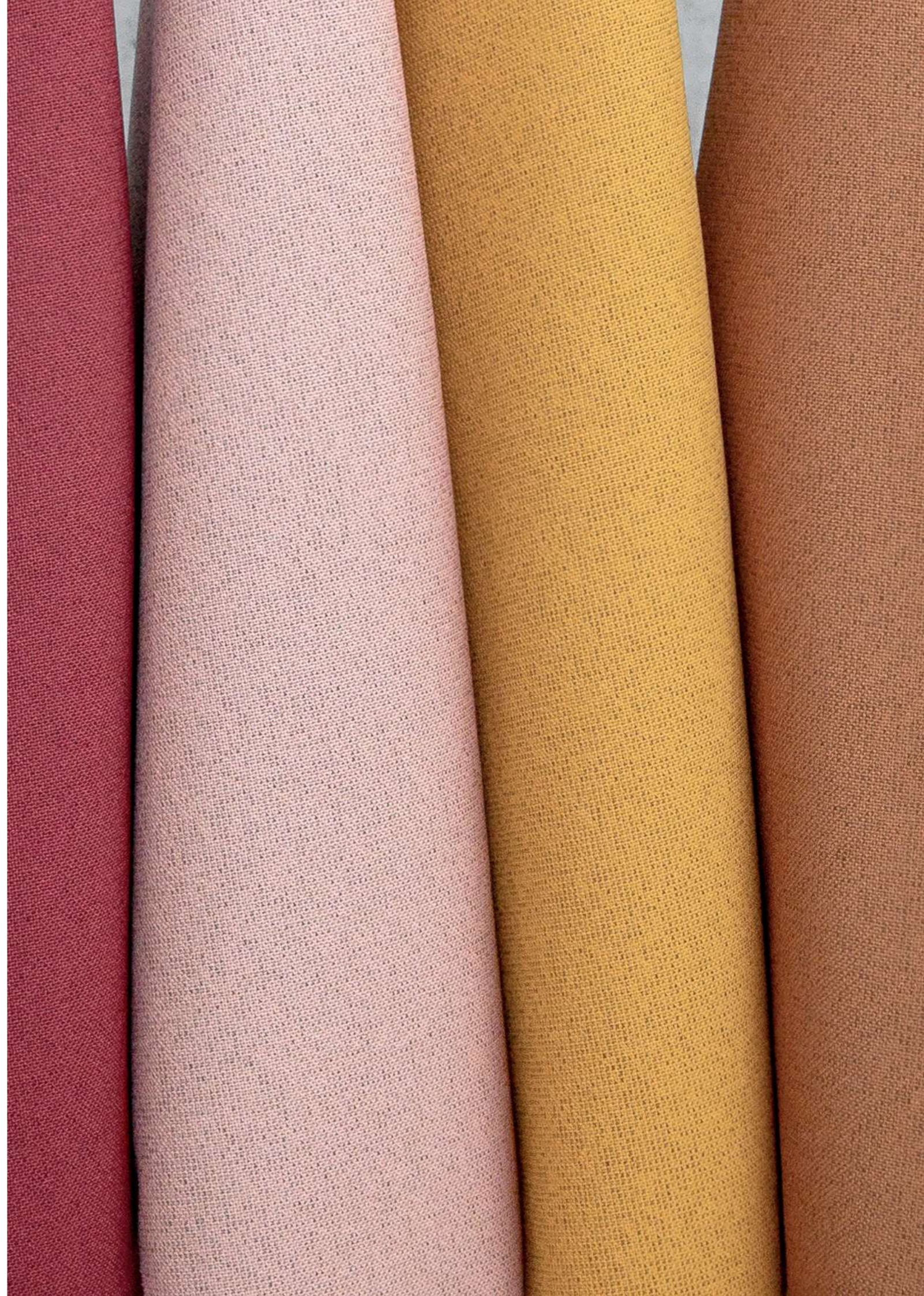
CHILI 68190



CHILI 68194



CHILI 68198







# STEP MELANGE

Step Melange is a 100 % Trevira CS upholstery textile with a vivid, pixelated expression that creates curiosity and attracts the eye. Where Step Melange features a subtle, heathered effect that brings life, depth, and textural appeal to the surface, the textile also comes in unicoloured version, Step.

<b>Supplier</b>	Gabriel
<b>Composition</b>	100% Trevira cs
<b>Martindale</b>	100.000
<b>Flammability</b>	BS EN 1021 1&2, CA TB 117-2013, BS 5852 Crib 5
<b>Environment</b>	STANDARD 100 by OEKO-TEX®, EU Ecolabel

**NORR11**

# STEP MELANGE BY GABRIEL



STEP MELANGE 61104



STEP MELANGE 61286



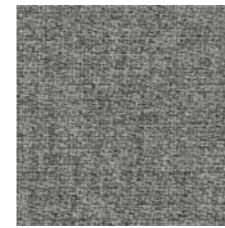
STEP MELANGE 60345



STEP MELANGE 61287



STEP MELANGE 61288



STEP MELANGE 60004



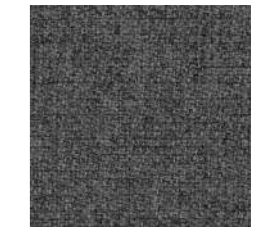
STEP MELANGE 61149



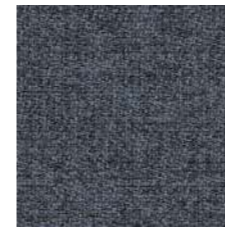
STEP MELANGE 61293



STEP MELANGE 61289



STEP MELANGE 60011



STEP MELANGE 66152



STEP MELANGE 61152



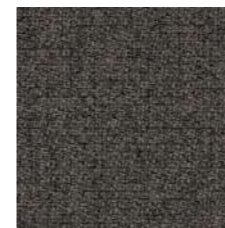
STEP MELANGE 61291



STEP MELANGE 66148



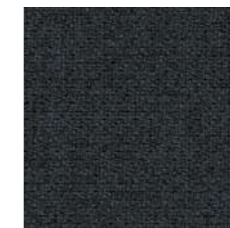
STEP MELANGE 60092



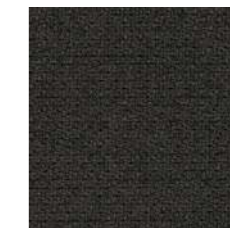
STEP MELANGE 60090



STEP MELANGE 66265



STEP MELANGE 66019



STEP MELANGE 60021



STEP MELANGE 64267



STEP MELANGE 62143



STEP MELANGE 61151



STEP MELANGE 63136



STEP MELANGE 63139



STEP MELANGE 64178





STEP MELANGE 63082



STEP MELANGE 64179



STEP MELANGE 62144



STEP MELANGE 63138



STEP MELANGE 64013



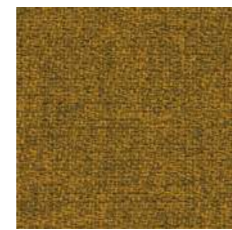
STEP MELANGE 62146



STEP MELANGE 63137



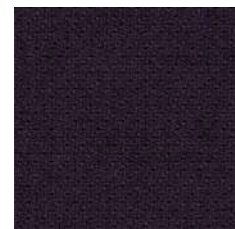
STEP MELANGE 64159



STEP MELANGE 62057



STEP MELANGE 63075



STEP MELANGE 65047



STEP MELANGE 61103



STEP MELANGE 64270



STEP MELANGE 65023



STEP MELANGE 66151



STEP MELANGE 67004



STEP MELANGE 60346



STEP MELANGE 66150



STEP MELANGE 67135



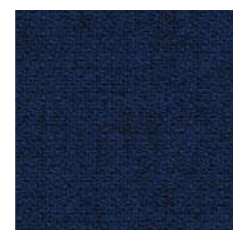
STEP MELANGE 67072



STEP MELANGE 66149



STEP MELANGE 66018



STEP MELANGE 65018



STEP MELANGE 66263



STEP MELANGE 67007



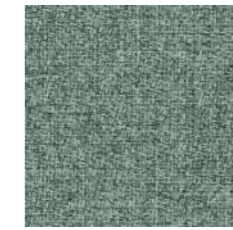
STEP MELANGE 65011



STEP MELANGE 66264



STEP MELANGE 68158



STEP MELANGE 68118



STEP MELANGE 68163



STEP MELANGE 68159



STEP MELANGE 68162



STEP MELANGE 68119



STEP MELANGE 68120



STEP MELANGE 68298



STEP MELANGE 62073



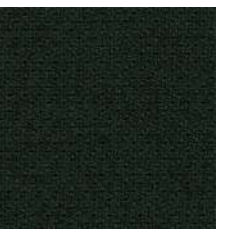
STEP MELANGE 68161



STEP MELANGE 68299



STEP MELANGE 68301



STEP MELANGE 68121

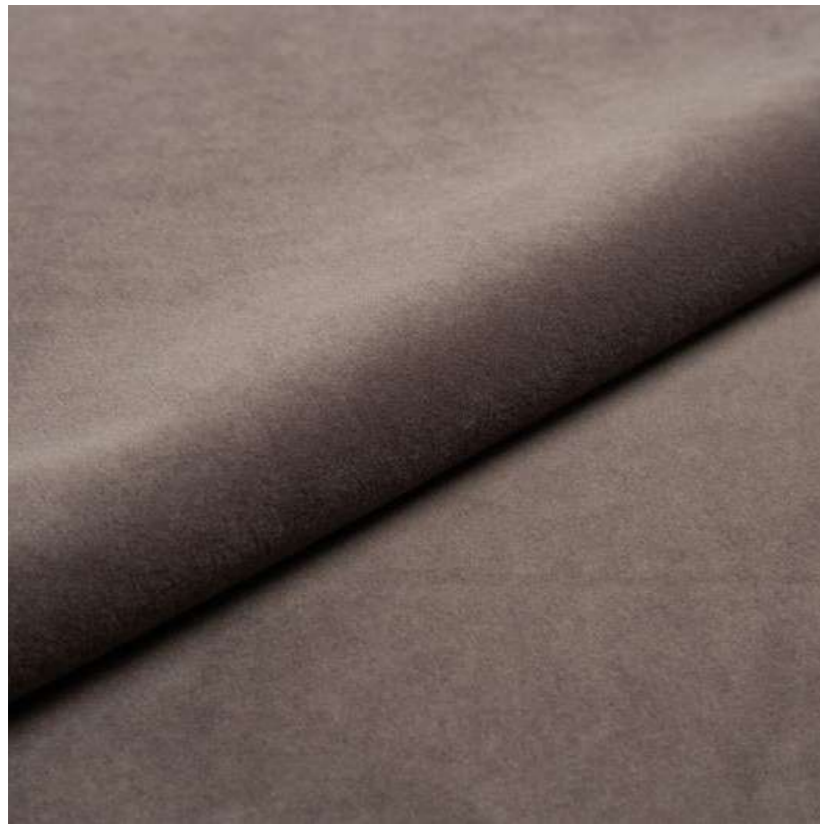


STEP MELANGE 68300



STEP MELANGE 68165



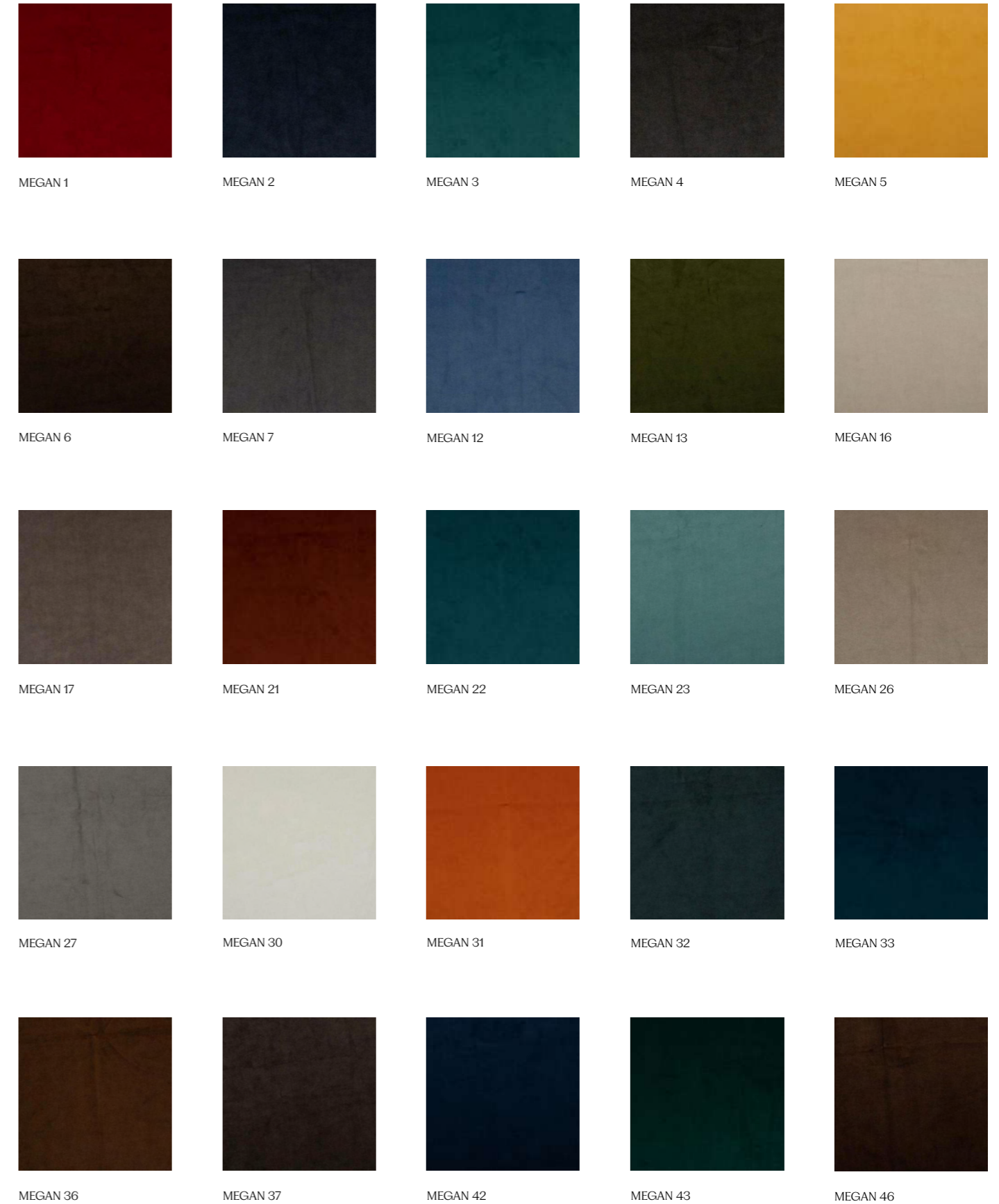


# MEGAN

Megan is a velvet in a sparkling color scheme. High, straight standing piles in a durable quality for all types of environments.

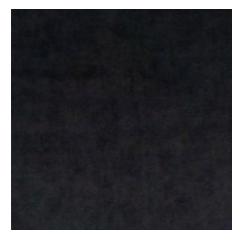
<b>Supplier</b>	Nevotex
<b>Composition</b>	100% Polyester
<b>Martindale</b>	170.000
<b>Flammability</b>	BS 5852-1 Source 0 & 1, Cal TB 117, EN 1021-1 & 2, IMO 2010 FTP Code part 8
<b>Environment</b>	STANDARD 100 by OEKO-TEX®

# MEGAN BY NEVOTEX

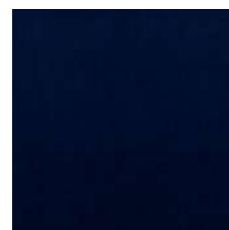


NORR11

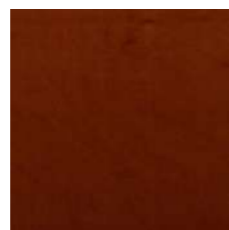




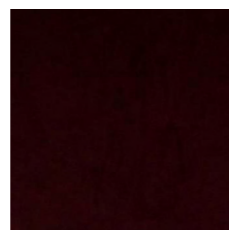
MEGAN 47



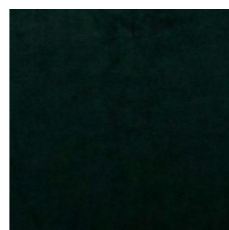
MEGAN 52



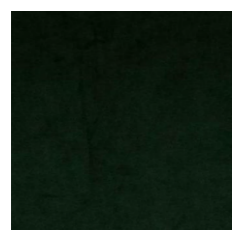
MEGAN 53



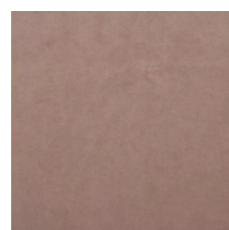
MEGAN 61



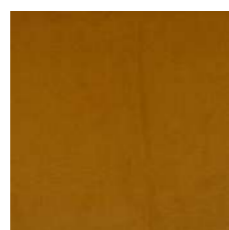
MEGAN 70



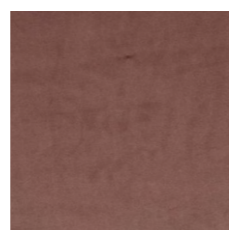
MEGAN 73



MEGAN 75



MEGAN 79



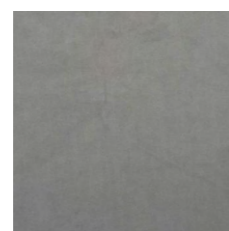
MEGAN 81



MEGAN 90



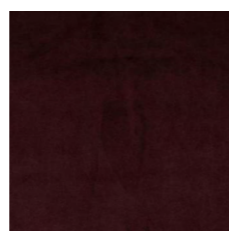
MEGAN 104



MEGAN 108



MEGAN 110



MEGAN 123





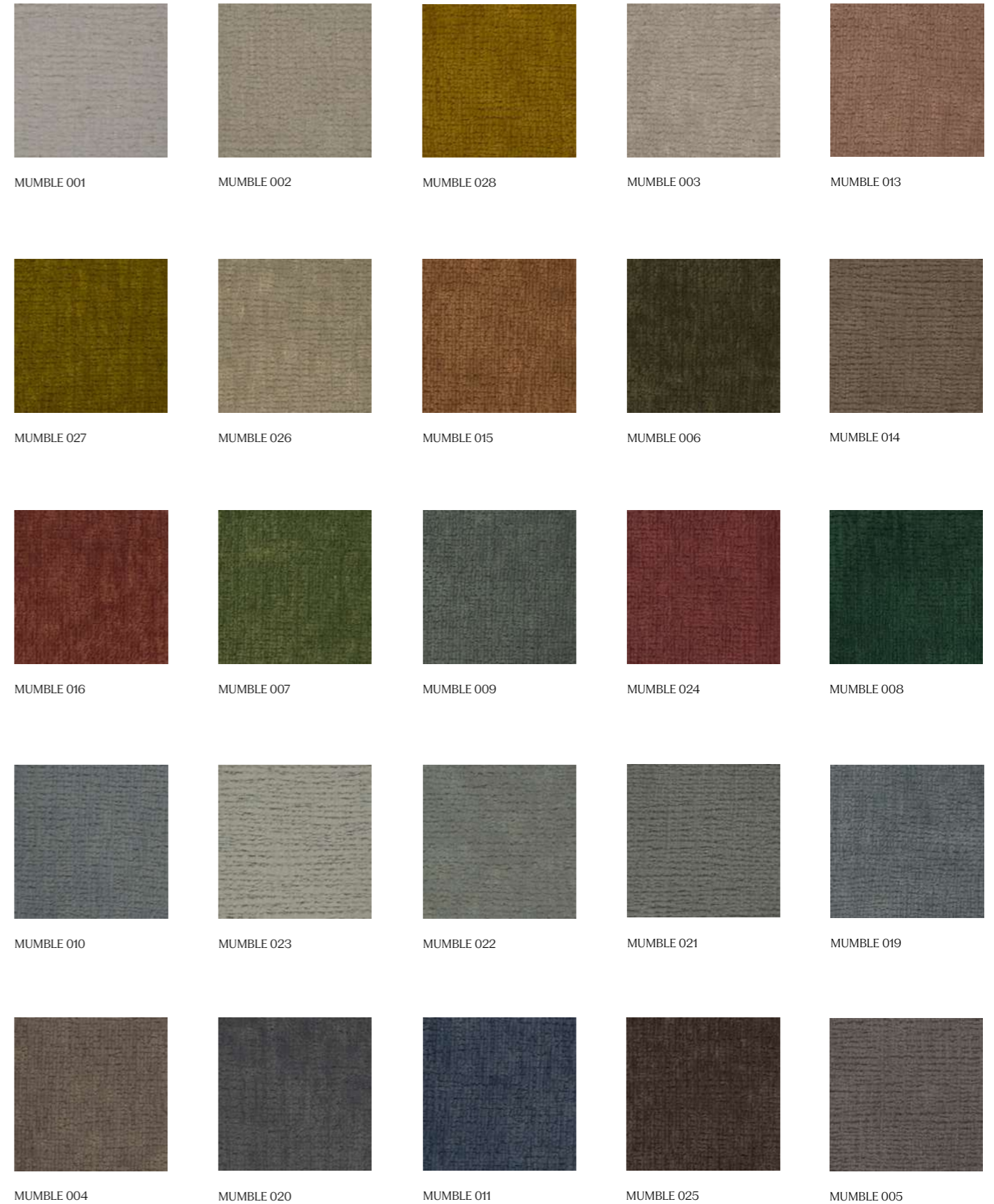


# MUMBLE

Mumble is a chenille fabric made from 100% recycled PET yarn. The obtained fabric is very soft to the touch, particularly resistant and able to maintain its characteristics unchanged over time. With a contemporary design, it presents a wide color range with natural tones.

<b>Supplier</b>	Glamour
<b>Composition</b>	72% RPET, 28% PL
<b>Martindale</b>	50.000
<b>Flammability</b>	BS EN 1021 1, CA TB 117-2013
<b>Environment</b>	GRS, STANDARD 100 by OEKO-TEX®

NORR11





# MUMBLE BY GLAMOUR



MUMBLE 018



MUMBLE 030



MUMBLE 012



MUMBLE 032

NORR11







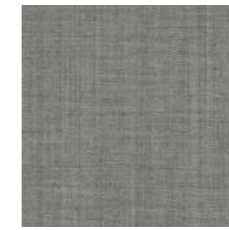
## REMIX 3

Remix 3 is an elegant upholstery textile distinguished by exceptional depth of colour. Remix 3 looks unicoloured from a distance but reveals subtle details and colour contrasts when viewed close-up. The textile features a tight, minimalistic weave, and derives its lively colour play from a combination of two different mélangé yarns, which each combine up to three hues.

<b>Supplier</b>	Kvadrat
<b>Composition</b>	90% New Wool Worsted, 10% Nylon
<b>Martindale</b>	100.000
<b>Flammability</b>	CAL 117, BS5852 part 1
<b>Environment</b>	EU Ecolabel, Greenguard Gold, HPD, EPD



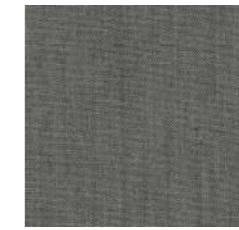
REMIX 3 0113



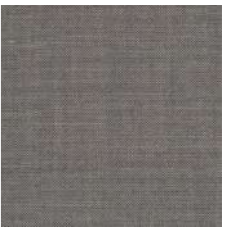
REMIX 3 0123



REMIX 3 0126



REMIX 3 0133



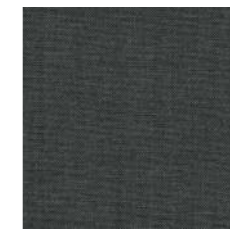
REMIX 3 0136



REMIX 3 0143



REMIX 3 0152



REMIX 3 0163



REMIX 3 0173



REMIX 3 0183



REMIX 3 0196



REMIX 3 0223



REMIX 3 0233



REMIX 3 0242



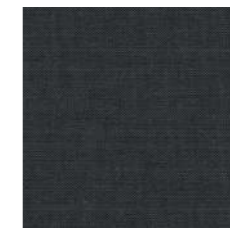
REMIX 3 0252



REMIX 3 0266



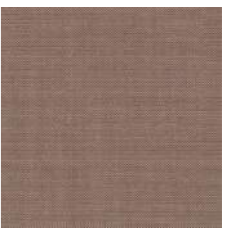
REMIX 3 0276



REMIX 3 0286



REMIX 3 0296



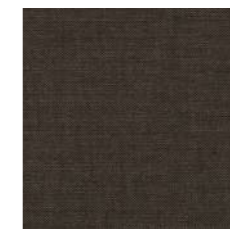
REMIX 3 0326



REMIX 3 0346



REMIX 3 0356



REMIX 3 0362



REMIX 3 0373

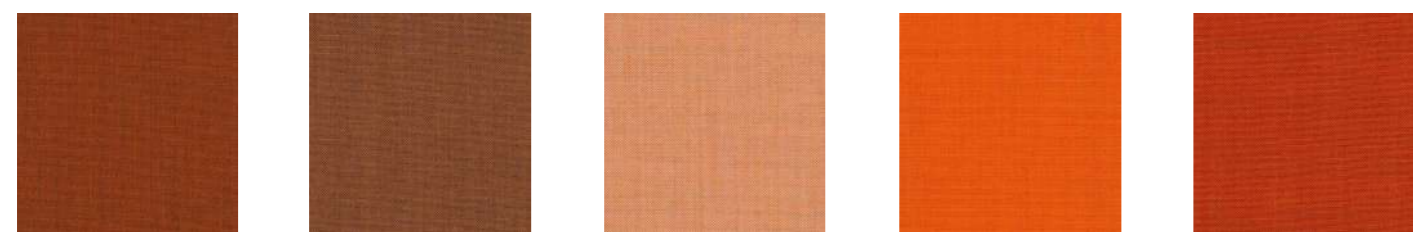


REMIX 3 0383





REMIX 3 0393    REMIX 3 0406    REMIX 3 0412    REMIX 3 0422    REMIX 3 0433



REMIX 3 0443    REMIX 3 0452    REMIX 3 0516    REMIX 3 0536    REMIX 3 0543



REMIX 3 0566    REMIX 3 0606    REMIX 3 0612    REMIX 3 0632    REMIX 3 0643



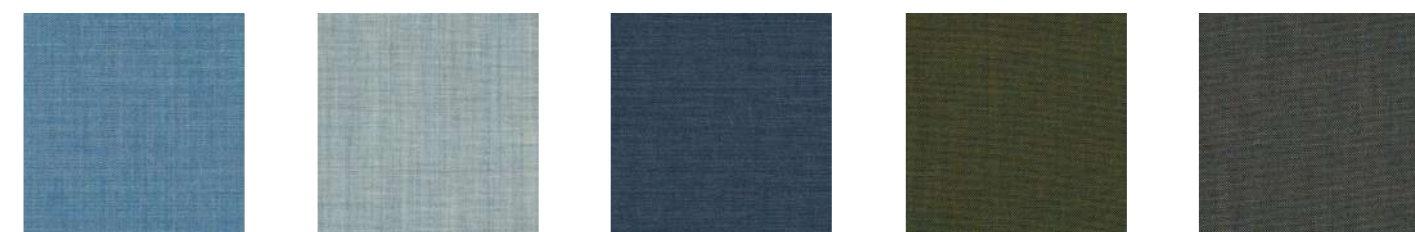
REMIX 3 0653    REMIX 3 0662    REMIX 3 0672    REMIX 3 0682    REMIX 3 0686



REMIX 3 0692    REMIX 3 0716    REMIX 3 0722    REMIX 3 0733    REMIX 3 0743



REMIX 3 0753    REMIX 3 0762    REMIX 3 0773    REMIX 3 0783    REMIX 3 0796



REMIX 3 0816    REMIX 3 0823    REMIX 3 0836    REMIX 3 0842    REMIX 3 0852



REMIX 3 0866    REMIX 3 0873    REMIX 3 0906    REMIX 3 0912    REMIX 3 0923



REMIX 3 0933    REMIX 3 0942    REMIX 3 0954    REMIX 3 0962    REMIX 3 0973



REMIX 3 0982    REMIX 3 0996





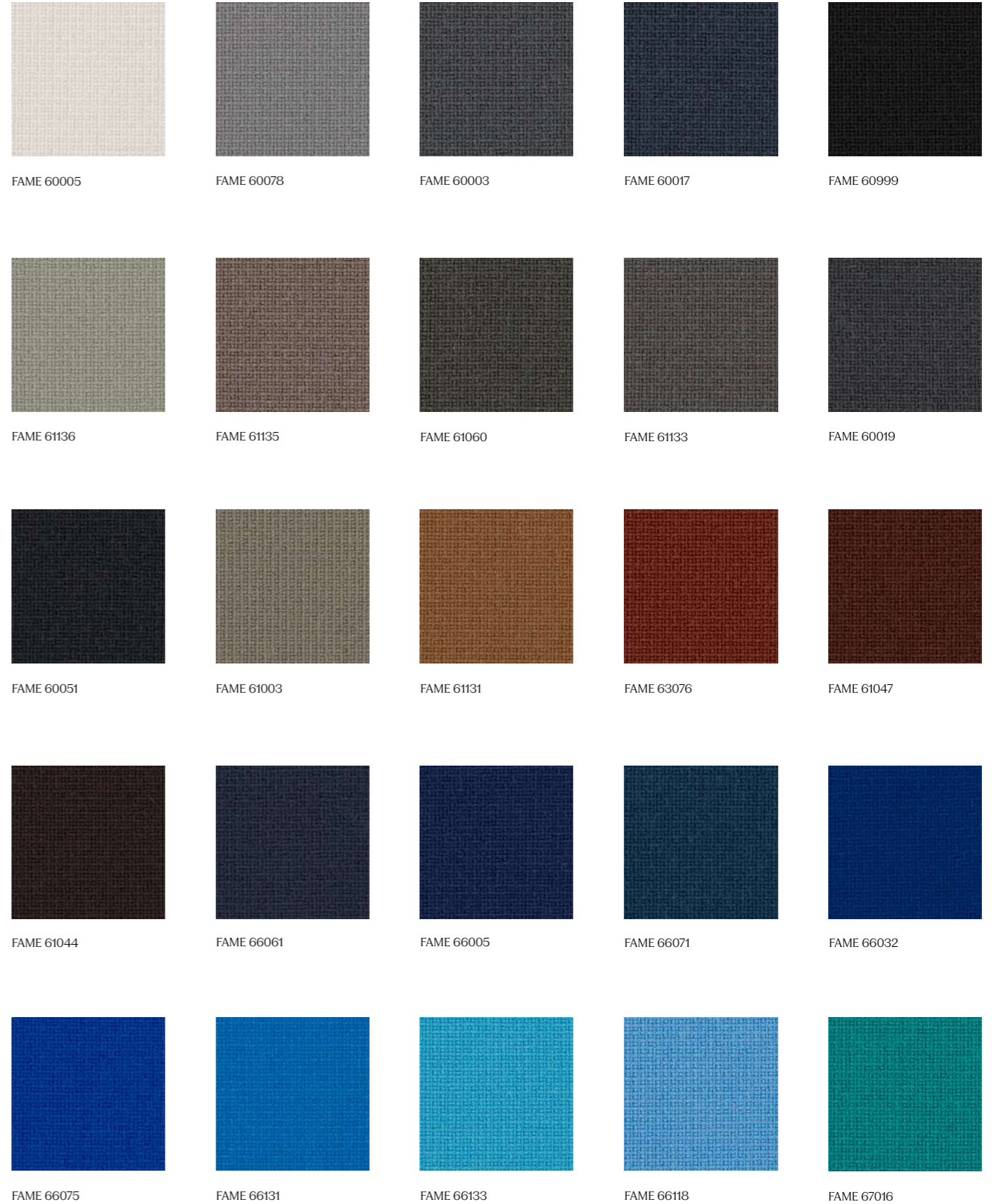
# FAME

Fame is a unique woollen upholstery fabric with a wearability of 200,000 Martindale, and at the same time is extra soft and stretchable. The colour scale is very elegant and vibrant.

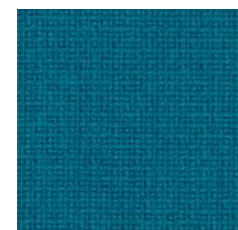
<b>Supplier</b>	Gabriel
<b>Composition</b>	95% New Zealand Wool, 5% Polyamide
<b>Martindale</b>	200.000
<b>Flammability</b>	BS EN 1021 1&2, BS5852 0&1, CAL 117, CRIB 5
<b>Environment</b>	STANDARD 100 by OEKO-TEX®, EU Ecolabel

NORR11

# FAME BY GABRIEL







FAME 67004



FAME 67068



FAME 66130



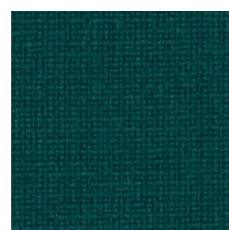
FAME 67067



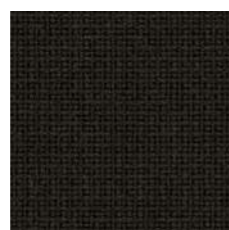
FAME 67069



FAME 67005



FAME 68143



FAME 61134



FAME 68148



FAME 68145



FAME 68146



FAME 68035



FAME 68004



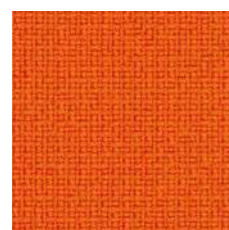
FAME 68147



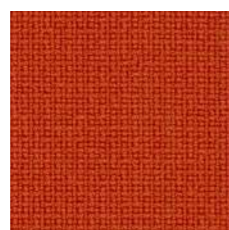
FAME 62067



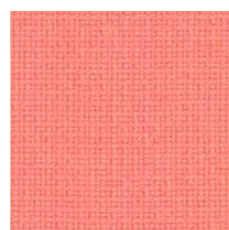
FAME 63077



FAME 63016



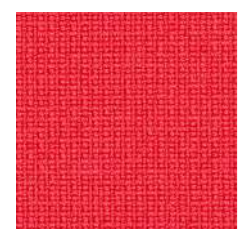
FAME 63078



FAME 64165



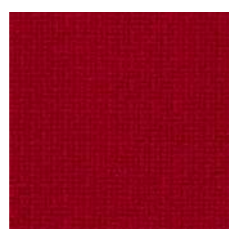
FAME 64169



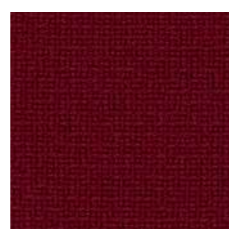
FAME 64166



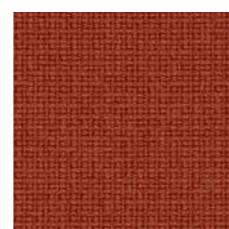
FAME 64119



FAME 64089



FAME 64058



FAME 64168



FAME 64167



FAME 61108



FAME 64055



FAME 65082



FAME 66132



FAME 65084



FAME 65083



FAME 65081



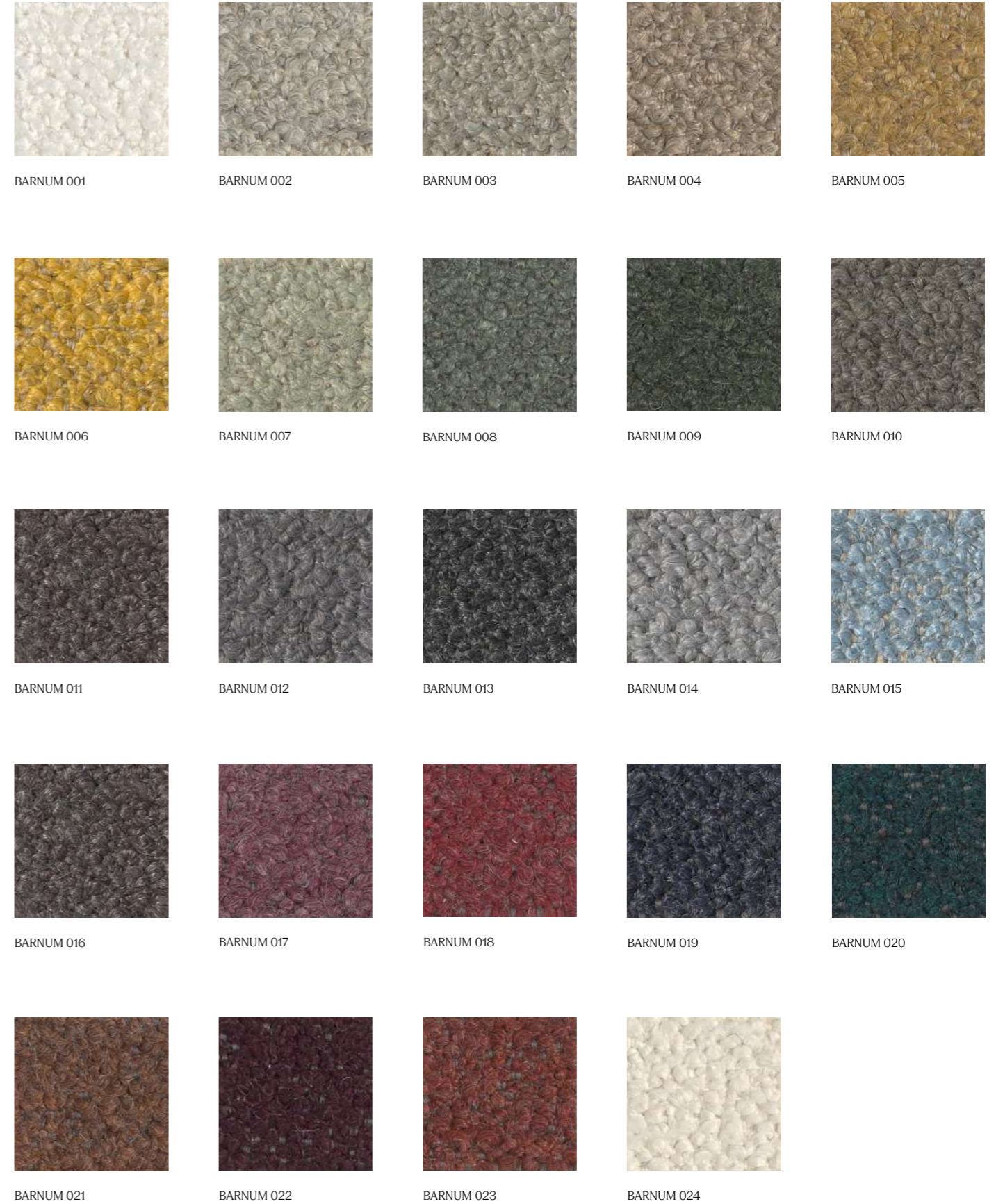


# BARNUM

Barnum by Glamour is a textured bouclé wool with a comfortable soft feel and is available in a various attractive colors. The fabric is durable and heavy enough to offer some acoustic absorption but soft enough to provide wamness and comfort.

<b>Supplier</b>	Glamour
<b>Composition</b>	45% Cotton, 19% Viscose, 15% Wool, 13% Acetate, 8% Nylon
<b>Martindale</b>	60.000
<b>Flammability</b>	BS 5852-1:1979, BS 5852-1:1979, TB 117:2013
<b>Environment</b>	STANDARD 100 by OEKO-TEX®

# BARNUM BY GLAMOUR



NORR11









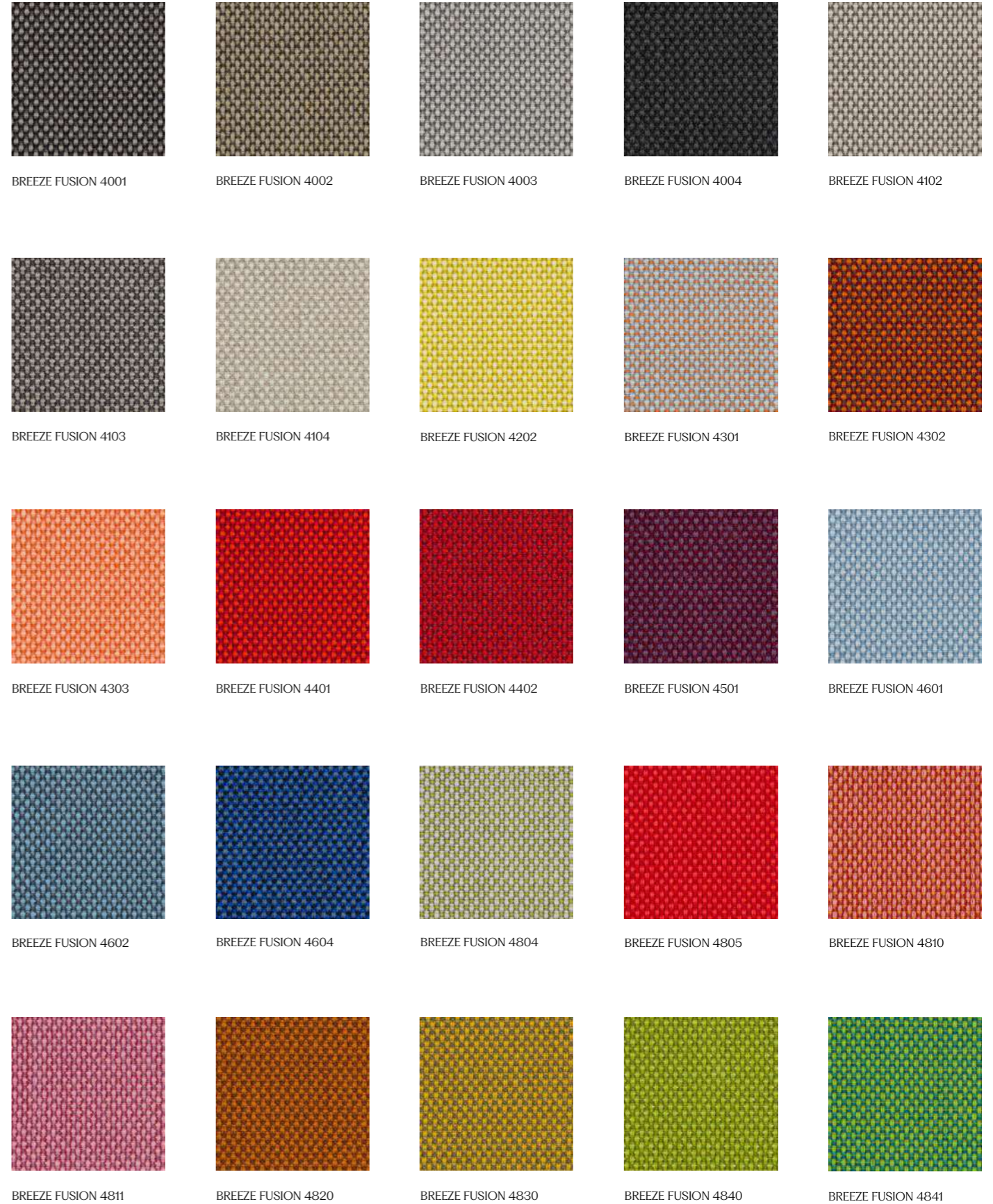
# BREEZE FUSION

Breeze Fusion is a richly textured, woollen upholstery fabric brought to life by intriguing colour blends. It offers superior durability, inherent fire resistance and a strong environmental profile.

<b>Supplier</b>	Gabriel
<b>Composition</b>	88% New Zealand Wool, 12% Polyamide
<b>Martindale</b>	100.000
<b>Flammability</b>	BS 5852 Part 1 0,1 Cigarette & Match, BS EN 1021 1&2 Cigarette & Match, CA TB 117-2013, Class Uno UNI 9175 Class 1 I EMME
<b>Environment</b>	STANDARD 100 by OEKO-TEX®, EU Ecolabel

NORR11

# BREEZE FUSION BY GABRIEL



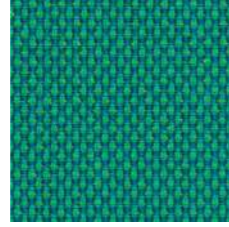




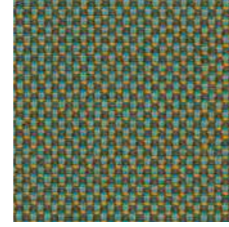
BREEZE FUSION 4850



BREEZE FUSION 4851



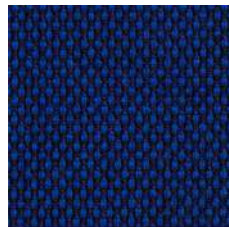
BREEZE FUSION 4860



BREEZE FUSION 4870



BREEZE FUSION 4871



BREEZE FUSION 4880



BREEZE FUSION 4890



BREEZE FUSION 4900



BREEZE FUSION 4910



BREEZE FUSION 4920



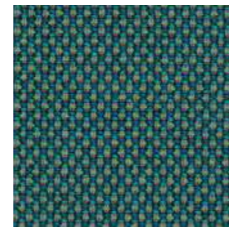
BREEZE FUSION 4930



BREEZE FUSION 4931



BREEZE FUSION 4932



BREEZE FUSION 4933



BREEZE FUSION 4934



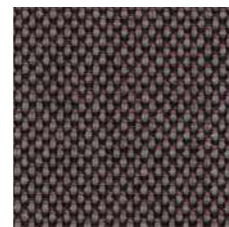
BREEZE FUSION 4935



BREEZE FUSION 4936



BREEZE FUSION 4937



BREEZE FUSION 4938







## CANVAS 2

Canvas 2 is a vibrant woollen upholstery textile. Particularly well-suited to large surfaces thanks to its pronounced structure, it features a soft weave and an expanded palette inspired by the landscapes of Skagen, Denmark. The melange yarn used to craft Canvas 2 combines three colours, with six hues in every colourway. Consequently, the textile offers exceptional colour richness and an intriguing expression.

<b>Supplier</b>	Kvadrat
<b>Composition</b>	90% New Wool Worsted, 10% Nylon
<b>Martindale</b>	100.000
<b>Flammability</b>	BS5852 part 1, CAL 117
<b>Environment</b>	EU Ecolabel, Greenguard Gold, HPD, EPD

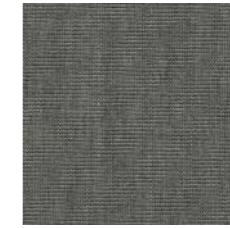
## CANVAS 2 BY KVADRAT



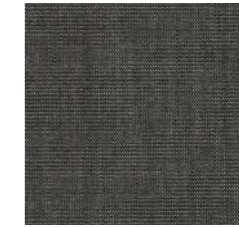
CANVAS 2 0114



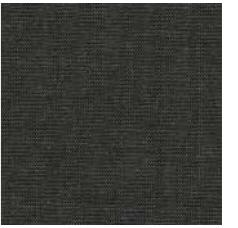
CANVAS 2 0124



CANVAS 2 0134



CANVAS 2 0154



CANVAS 2 0174



CANVAS 2 0216



CANVAS 2 0224



CANVAS 2 0244



CANVAS 2 0254



CANVAS 2 0264



CANVAS 2 0356



CANVAS 2 0364



CANVAS 2 0374



CANVAS 2 0414



CANVAS 2 0424



CANVAS 2 0446



CANVAS 2 0454



CANVAS 2 0546



CANVAS 2 0556



CANVAS 2 0566



CANVAS 2 0576



CANVAS 2 0614



CANVAS 2 0644



CANVAS 2 0654



CANVAS 2 0666

NORR11





CANVAS 2 0674



CANVAS 2 0684



CANVAS 2 0694



CANVAS 2 0716



CANVAS 2 0726



CANVAS 2 0734



CANVAS 2 0746



CANVAS 2 0764



CANVAS 2 0786



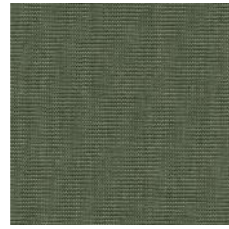
CANVAS 2 0794



CANVAS 2 0836



CANVAS 2 0854



CANVAS 2 0926



CANVAS 2 0936



CANVAS 2 0946



CANVAS 2 0954



CANVAS 2 0964



CANVAS 2 0974



CANVAS 2 0984



CANVAS 2 0996







# FIORD 2

Fiord 2 is a versatile woollen upholstery textile with a subtle three-dimensional look. The construction of Fiord 2 combines a mélangé yarn with a unicoloured yarn that creates pearl-like dots that play across the textile's surface. This sophisticated expression reflects a key source of inspiration behind the design: moonlight glittering like pearls on the rippling waters of a Norwegian fjord.

<b>Supplier</b>	Kvadrat
<b>Composition</b>	92% New Wool Worsted, 8% Nylon
<b>Martindale</b>	60.000
<b>Flammability</b>	BS5852 part 1, CAL 117
<b>Environment</b>	EU Ecolabel, Greenguard Gold, HPD, EPD

# FIORD 2 BY KVADRAT



NORR11





FIORD 2 0672



FIORD 2 0771



FIORD 2 0782



FIORD 2 0791



FIORD 2 0821



FIORD 2 0862



FIORD 2 0951



FIORD 2 0961



FIORD 2 0971



FIORD 2 0981



FIORD 2 0991

NORR11







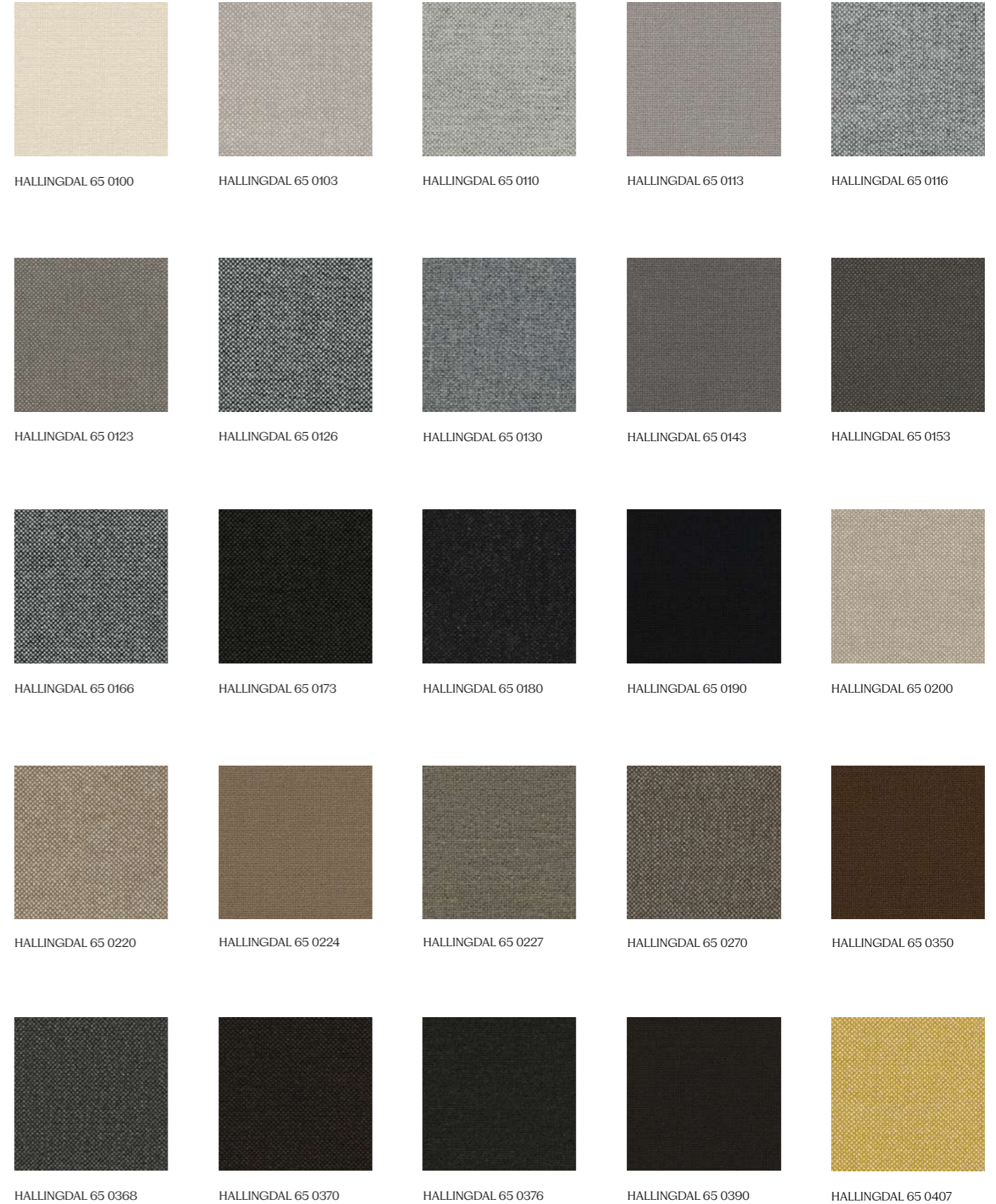
# HALLINGDAL 65

Kvadrat's first textile Hallingdal has become the archetype of woollen textiles. Hallingdal 65 is made of wool and viscose, which complement each other well: the wool provides excellent durability and flexibility, whilst the viscose adds brilliance and depth to the colour. Both materials are dyed before they are spun, which highlights the rich texture of the fabric.

<b>Supplier</b>	Kvadrat
<b>Composition</b>	70% New Wool, 30% Viscose
<b>Martindale</b>	100.000
<b>Flammability</b>	EN 1021-1/2 , BS 5852 part 1, Crib 5
<b>Environment</b>	EU Ecolabel, Greenguard Gold, HPD, EPD

NORR11

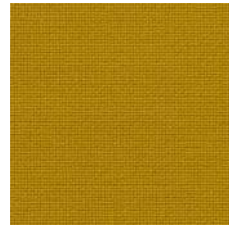
# HALLINGDAL 65 BY KVADRAT







HALLINGDAL 65 0420



HALLINGDAL 65 0457



HALLINGDAL 65 0526



HALLINGDAL 65 0547



HALLINGDAL 65 0563



HALLINGDAL 65 0573



HALLINGDAL 65 0590



HALLINGDAL 65 0596



HALLINGDAL 65 0600



HALLINGDAL 65 0657



HALLINGDAL 65 0660



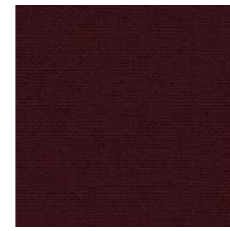
HALLINGDAL 65 0674



HALLINGDAL 65 0680



HALLINGDAL 65 0687



HALLINGDAL 65 0694



HALLINGDAL 65 0702



HALLINGDAL 65 0723



HALLINGDAL 65 0733



HALLINGDAL 65 0750



HALLINGDAL 65 0753



HALLINGDAL 65 0754



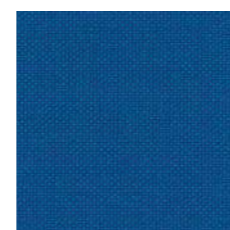
HALLINGDAL 65 0763



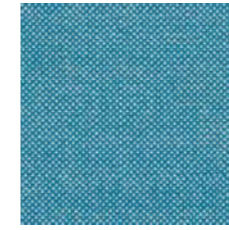
HALLINGDAL 65 0764



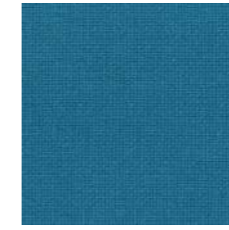
HALLINGDAL 65 0773



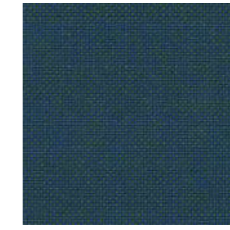
HALLINGDAL 65 0810



HALLINGDAL 65 0840



HALLINGDAL 65 0850



HALLINGDAL 65 0890



HALLINGDAL 65 0907



HALLINGDAL 65 0944



HALLINGDAL 65 0960



HALLINGDAL 65 0968



HALLINGDAL 65 0980



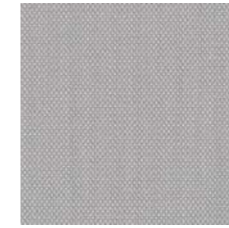


## STEELCUT TRIO 3

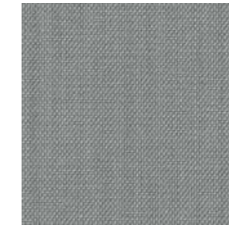
The three-dimensional surface of Steelcut Trio 3 resembles small pyramids or steel points. Despite the complexity of the textile's innovative weave, it has a simple, precise expression. Steelcut Trio 3 is yarn-dyed and made from 3 differently coloured yarns.

<b>Supplier</b>	Kvadrat
<b>Composition</b>	90% New Wool Worsted, 10% Nylon
<b>Martindale</b>	100.000
<b>Flammability</b>	EN 1021-1/2, BS5852 part 1, CAL 117
<b>Environment</b>	EU Ecolabel, Greenguard Gold, HPD, EPD

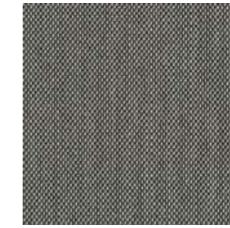
## STEELCUT TRIO 3 BY KVADRAT



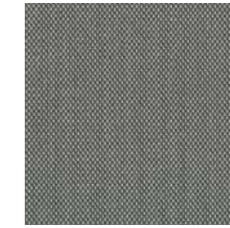
STEELCUT TRIO 0105



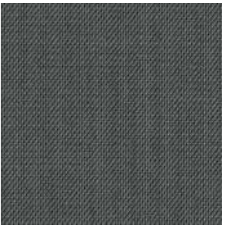
STEELCUT TRIO 0113



STEELCUT TRIO 0124



STEELCUT TRIO 0133



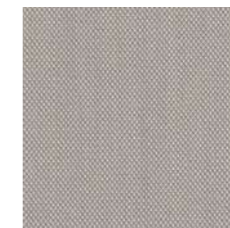
STEELCUT TRIO 0153



STEELCUT TRIO 0176



STEELCUT TRIO 0195



STEELCUT TRIO 0205



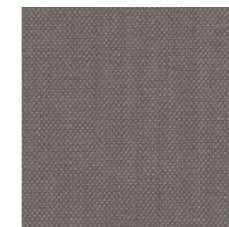
STEELCUT TRIO 0213



STEELCUT TRIO 0226



STEELCUT TRIO 0236



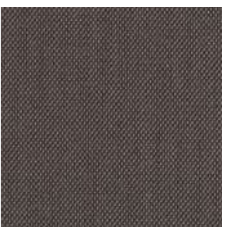
STEELCUT TRIO 0246



STEELCUT TRIO 0253



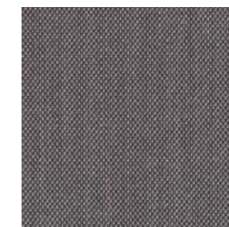
STEELCUT TRIO 0266



STEELCUT TRIO 0276



STEELCUT TRIO 0283



STEELCUT TRIO 0336



STEELCUT TRIO 0376



STEELCUT TRIO 0383



STEELCUT TRIO 0416



STEELCUT TRIO 0426



STEELCUT TRIO 0436



STEELCUT TRIO 0446



STEELCUT TRIO 0453



STEELCUT TRIO 0466

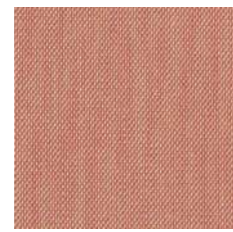




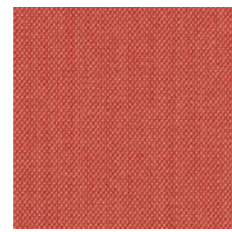
STEELCUT TRIO 0476



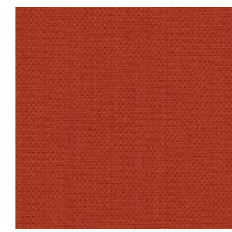
STEELCUT TRIO 0506



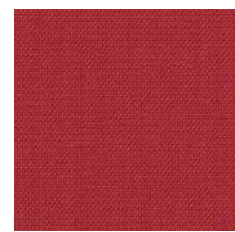
STEELCUT TRIO 0515



STEELCUT TRIO 0526



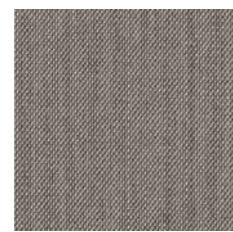
STEELCUT TRIO 0533



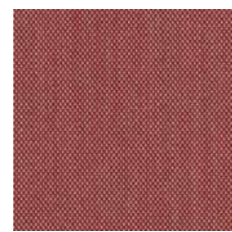
STEELCUT TRIO 0553



STEELCUT TRIO 0576



STEELCUT TRIO 0616



STEELCUT TRIO 0636



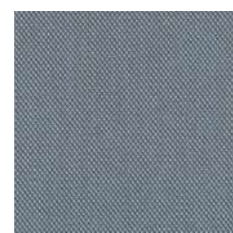
STEELCUT TRIO 0645



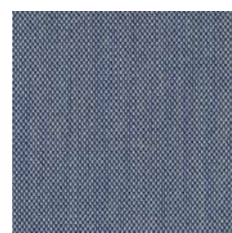
STEELCUT TRIO 0666



STEELCUT TRIO 0686



STEELCUT TRIO 0713



STEELCUT TRIO 0716



STEELCUT TRIO 0746



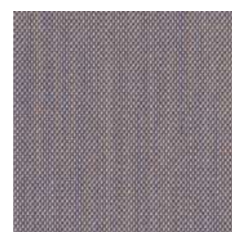
STEELCUT TRIO 0756



STEELCUT TRIO 0776



STEELCUT TRIO 0796



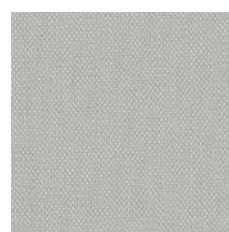
STEELCUT TRIO 0806



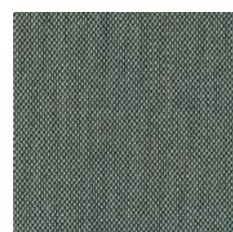
STEELCUT TRIO 0865



STEELCUT TRIO 0883



STEELCUT TRIO 0906



STEELCUT TRIO 0916



STEELCUT TRIO 0946



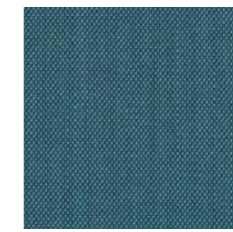
STEELCUT TRIO 0953



STEELCUT TRIO 0966



STEELCUT TRIO 0976



STEELCUT TRIO 0983



STEELCUT TRIO 0996





# SAVANNA

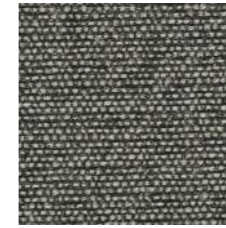
Savanna by Kvadrat is an upholstery textile, which combines different types of yarns and materials to offer distinctive depth and richness. The textile fuses shiny yarns, matt yarns and bouclé yarns. As a result, it features a rich, irregular surface, which reveals an eye-catching play of details when seen from close up.

<b>Supplier</b>	Kvadrat
<b>Composition</b>	34% Polyester, 31% New Wool, 26% Polyacrylic, 4% Cotton, 3% Nylon, 2% Linen
<b>Martindale</b>	45.000
<b>Flammability</b>	BS 5852 crib 5 w. treatment, NF D 60 013 w. treatment, SN 198 898 5.3 w. treatment, UNI 9175 1IM w. treatment, US Cal. Bull. 117-2013, EN 1021-1/2, AS/NZS 3837 class 2, BS 5852 part 1 w. treatment
<b>Environment</b>	Greenguard Gold, HPD, EPD

# SAVANNA BY KVADRAT



SAVANNA 0122



SAVANNA 0152



SAVANNA 0192



SAVANNA 0202



SAVANNA 0222



SAVANNA 0242



SAVANNA 0262



SAVANNA 0292



SAVANNA 0442



SAVANNA 0622



SAVANNA 0672



SAVANNA 0952





## ZERO

The influence of Parisian couture clothing can be seen in this elegant and irregular bouclé upholstery textile. The pearl effect yarn is used in both warp and weft giving a luxurious handle and a sophisticated appearance. The sixteen colourways range from tonal through to contrasting 'salt and pepper' combinations.

<b>Supplier</b>	Sahco
<b>Composition</b>	65% Cotton, 20% Polyacrylic, 15% Polyester
<b>Martindale</b>	70.000
<b>Flammability</b>	BS 5852 crib 5 w. treatment , EN 1021-1, US Cal. 117-2013 w. Cal. 117 compliant interliner, BS 5852 part 1 w. treatment
<b>Environment</b>	Greenguard Gold, HPD

## ZERO BY SAHCO



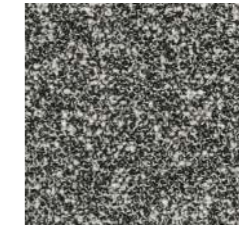
ZERO 0001



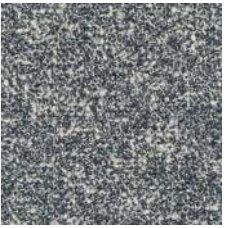
ZERO 0002



ZERO 0003



ZERO 0004



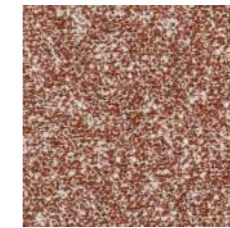
ZERO 0005



ZERO 0006



ZERO 0007



ZERO 0008



ZERO 0009



ZERO 0010



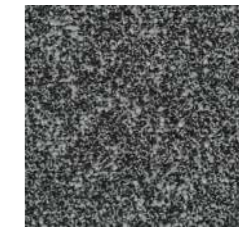
ZERO 0011



ZERO 0012



ZERO 0013



ZERO 0014



ZERO 0015



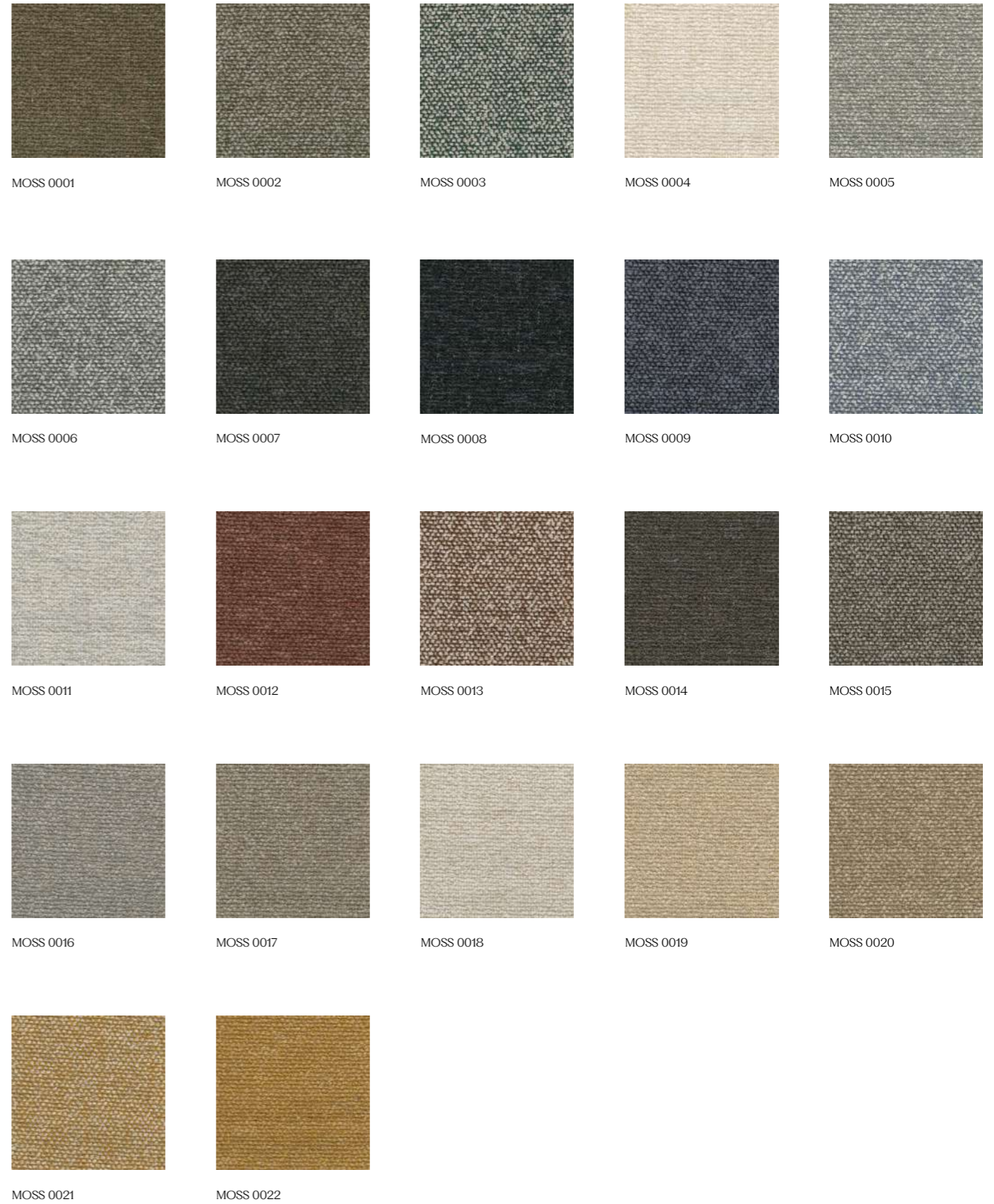


# MOSS

The influence of Parisian couture clothing can be seen in this elegant and irregular bouclé upholstery textile. The pearl effect yarn is used in both warp and weft giving a luxurious handle and a sophisticated appearance. The sixteen colourways range from tonal through to contrasting 'salt and pepper' combinations.

<b>Supplier</b>	Sahco
<b>Composition</b>	52% Cotton, 22% Viscose, 14% Polyacrylic, 6% Linen, 3% Polyester, 3% Nylon
<b>Martindale</b>	50.000
<b>Flammability</b>	BS 5852 crib 5 w. treatment, BS 5852 part 1, EN 1021-1/2, US Cal. 117-2013 with Cal. 117 compliant interliner, IMO FTP Code 2010 Part 8
<b>Environment</b>	EPD

# MOSS BY SAHCO



NORR11





## SAFIRE

Safire's coarse surface structure gives a subtle handwoven appearance that is both unique and dynamic, adding a special and unique dimension to this upholstery fabric. The thick boucle and chenille yarns contribute to its wooly handle and soft appeal but also gives a vibrant two-tone effect. The colour palette includes both quiet natural shades and strong, bold combinations.

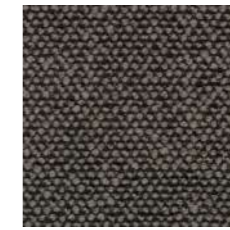
<b>Supplier</b>	Sahco
<b>Composition</b>	43% Viscose, 17% Polyacrylic, 15% New Wool, 9% Cotton, 8% Linen, 8% Polyester
<b>Martindale</b>	44.000
<b>Flammability</b>	BS 5852 crib 5 w. treatment, BS 5852 part 1, EN 1021-1/2, US Cal. Bull. 117-2013, IMO FTP Code 2010 Part 8
<b>Environment</b>	Greenguard Gold, HPD, EPD



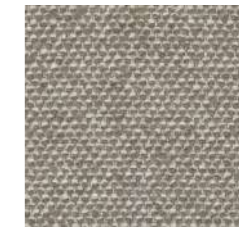
SAFIRE 0001



SAFIRE 0002



SAFIRE 0003



SAFIRE 0004



SAFIRE 0005



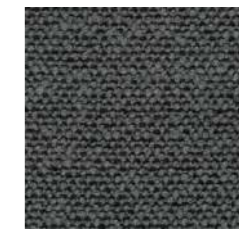
SAFIRE 0006



SAFIRE 0007



SAFIRE 0008



SAFIRE 0009



SAFIRE 0010



SAFIRE 0011



SAFIRE 0012



SAFIRE 0013



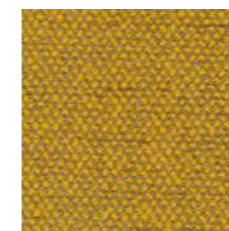
SAFIRE 0014



SAFIRE 0015



SAFIRE 0016



SAFIRE 0017

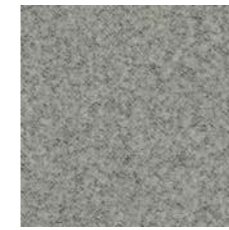




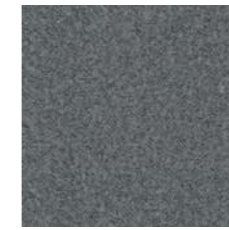
# BARU

An ultra-soft woven woollen bouclé, Baru feels like shorn fleece and has a comforting volume created by the elasticity of the wool fibre and the finishing processes. Yarn dyed with one colour in warp and another in weft, it has the benefits of a woollen textile but a softer feel. The texture of the bouclé coupled with a slight shine from the acrylic blend creates a playful effect as the colour catches the light.

<b>Supplier</b>	Sahco
<b>Composition</b>	87% New Wool, 10% Polyester, 3% Polyamide
<b>Martindale</b>	65.000
<b>Flammability</b>	BS 5852 part 1, US Cal. Bull. 117-2013, EN 1021-1/2, BS 5852 crib 5 w. treatment, IMO FTP Code 2010 Part 8
<b>Environment</b>	Greenguard Gold, HPD, EPD



BARU 0120



BARU 0150



BARU 0200



BARU 0330



BARU 0390



BARU 0410



BARU 0450



BARU 0570



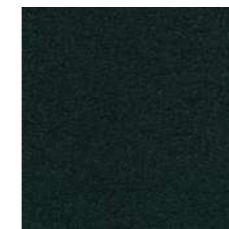
BARU 0740



BARU 0780



BARU 0950



BARU 0980



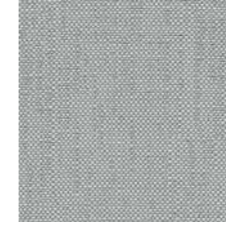


# SAVANE

OUTDOOR FABRIC BY SUNBRELLA



SAVANE COCONUT



SAVANE WHISPER

## SAVANE

Sunbrella Savane is a jacquard outdoor upholstery fabric made from solution dyed Sunbrella acrylic. Savane is treated to hold up to salt water, chlorine, and weather-related chemicals. The fabric will also resist water, stains, and fading.

<b>Supplier</b>	Sunbrella
<b>Composition</b>	100% Sunbrella® Acrylic
<b>Martindale</b>	-
<b>Flammability</b>	California Technical Bulletin 117-203 Section 1, NFPA 260 Classe I, NF EN 1021-1
<b>Environment</b>	STANDARD 100 by OEKO-TEX®, Greenguard Gold

NORR11



# OUR LEATHER CURATION



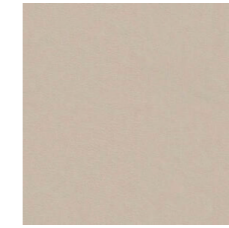
# OUR LEATHER CURATION

For centuries, leather has symbolized craftsmanship, elegance, and durability, and due to its exceptional qualities, it has remained a timeless choice. We use leather from the renowned Sørensens Leather and offer three types: Aniline, Semi-Aniline, and Protected leather. Our thoughtfully curated selection from seven distinct collections, each unique in expression and treatment, is available in eighteen muted tones that blend harmoniously with other textures and materials ensuring a graceful and timeless expression.

NORR11



SPECTRUM MINERAL  
30160



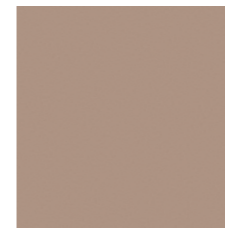
TERRA LIME  
20365



DUNES CAMEL  
21004



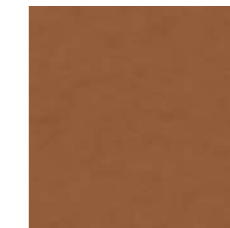
DUNES COGNAC  
21000



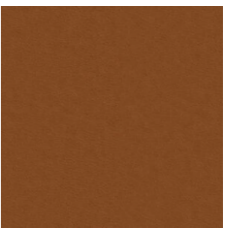
FLUX LIGHT BROWN  
40305



DUNES ECRU  
21008



NUANCE WALNUT  
40790



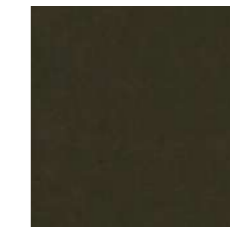
TERRA SOIL  
20360



DUNES ALMOND  
21009



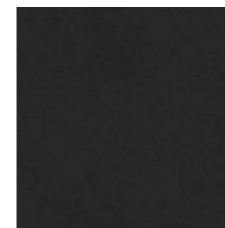
DUNES DARK BROWN  
21001



ENVY OLIVE  
20324



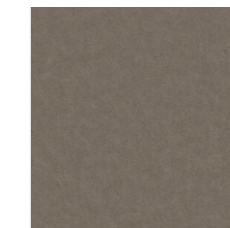
TERRA CLAY  
20370



DUNES ANTHRAZITE  
21003



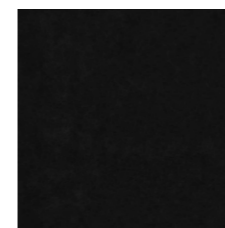
FLUX ANTHRAZITE  
40302



DUNES STONE  
21010



NUANCE BURNED GREY  
40783

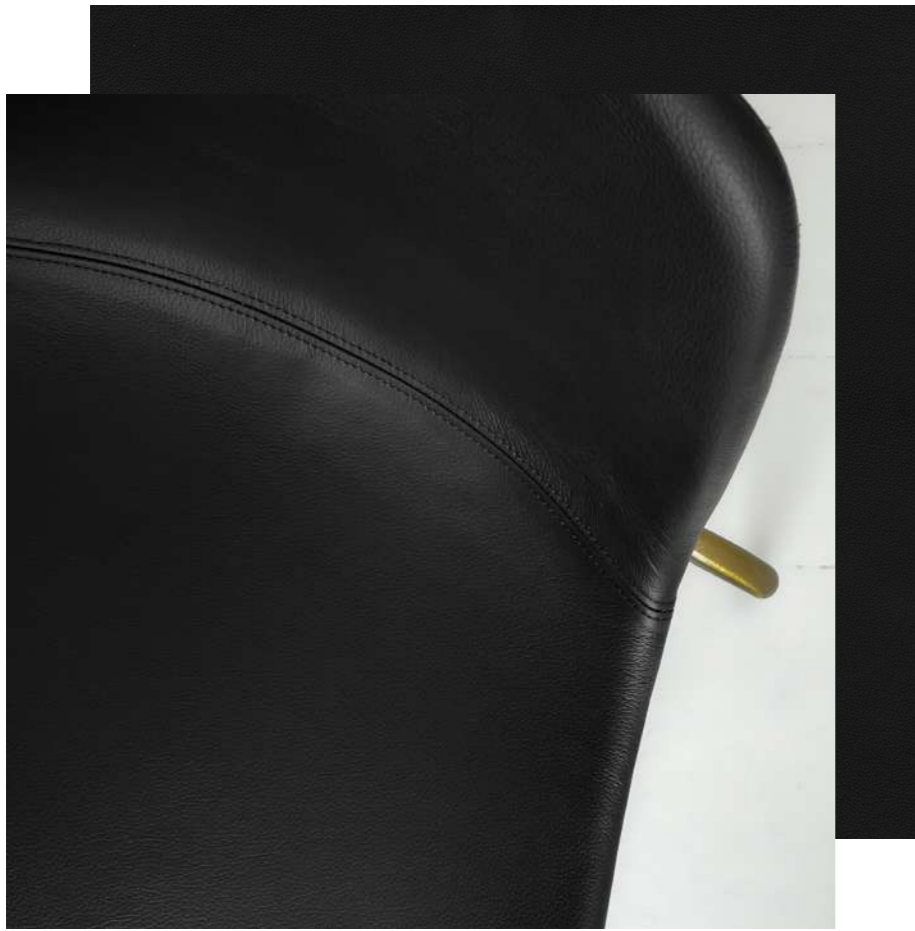


ENVY BLACK  
20321



ULTRA BLACK  
41599





## ULTRA

One of the most versatile leathers around, Ultra is everything you would want in an “everyday” type of leather. Buffed and embossed and truly nice to touch, the surface of Ultra boasts a uniform grain pattern spanning over the entire hide. Ultra has some additional amazing attributes. Thanks to its extremely strong protective finish, it’s very user-friendly and easy to maintain.

<b>Supplier</b>	Sørensen Leather
<b>Composition</b>	100% Protected Leather
<b>Martindale</b>	-
<b>Flammability</b>	BS EN 1021 1&2, BS5852 0&1, CAL 117, FAR §23.853 (AUS)
<b>Environment</b>	PCP, AZO dyes, Chrome VI, REACH

*Please note that the colours not included in NORR11 selection will be quoted individually.*



ULTRA ALTWEISS  
41576



ULTRA ANTHRAZITE  
41580



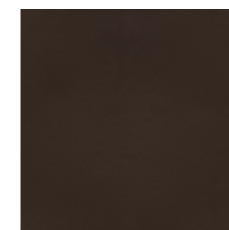
ULTRA BLACK BROWN  
41590



ULTRA BRANDY  
41574



ULTRA BRICK  
41579



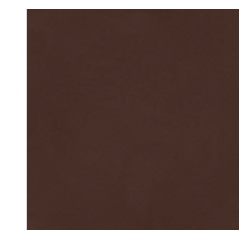
ULTRA BROWN  
41588



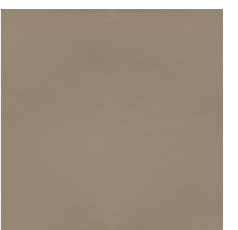
ULTRA CAMEL  
41571



ULTRA CHOCOLATE  
41589



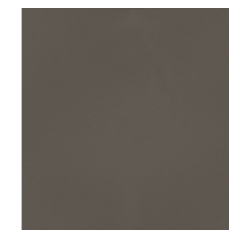
ULTRA COGNAC  
41598



ULTRA EARTH  
41584



ULTRA EGGSHELL  
41581



ULTRA GREY  
41585



ULTRA LAVA  
41575



ULTRA LEAF  
41566



ULTRA MARBLE  
41583

NORR11





ULTRA MARSH  
41570



ULTRA MOSS  
41569



ULTRA NAVY  
41573



ULTRA OAT  
41568



ULTRA POPPY  
41578



ULTRA SAFARI  
41586



ULTRA SAND  
41582



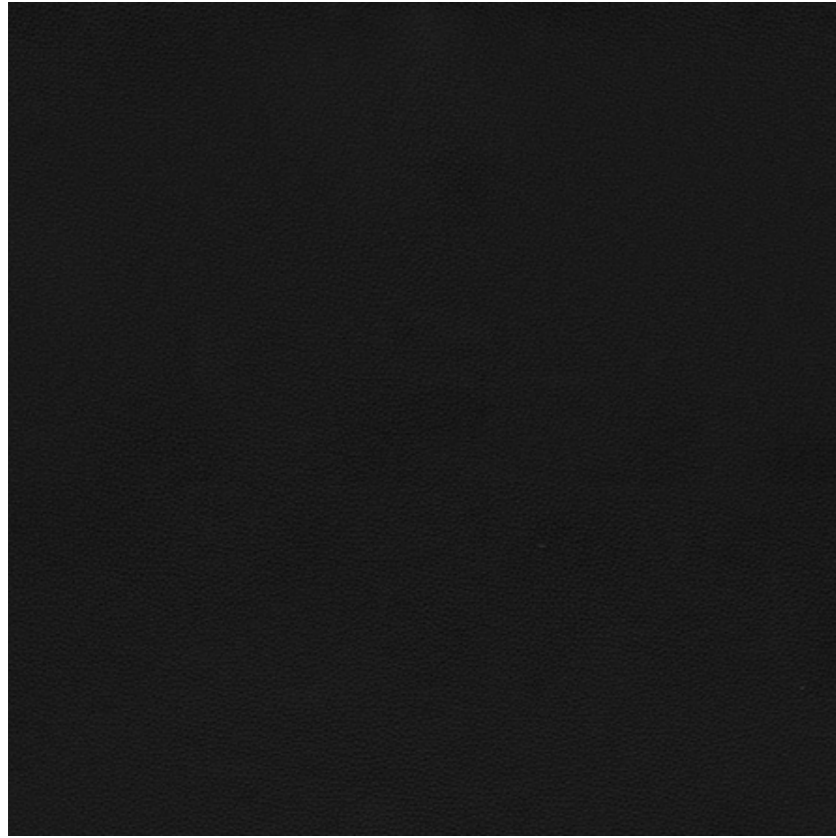
ULTRA SMOKE  
41567



ULTRA WHITE  
41594



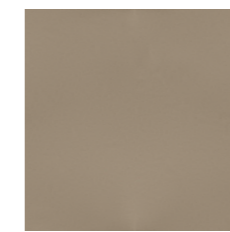




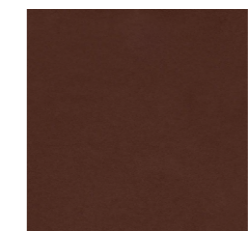
ULTRA CRIB5  
ANTHRAZITE 41615



ULTRA CRIB5  
CHOCOLATE 41614



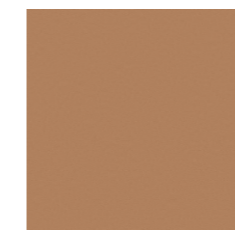
ULTRA CRIB5  
ALTWEISS 41610



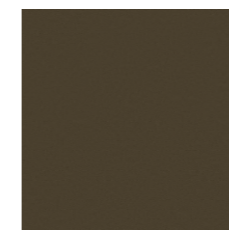
ULTRA CRIB5  
COGNAC 41613



ULTRA CRIB5  
BRANDY 41612



ULTRA CRIB5  
CAMEL 41611



ULTRA CRIB5  
MOSS 41617

## ULTRA CRIB5

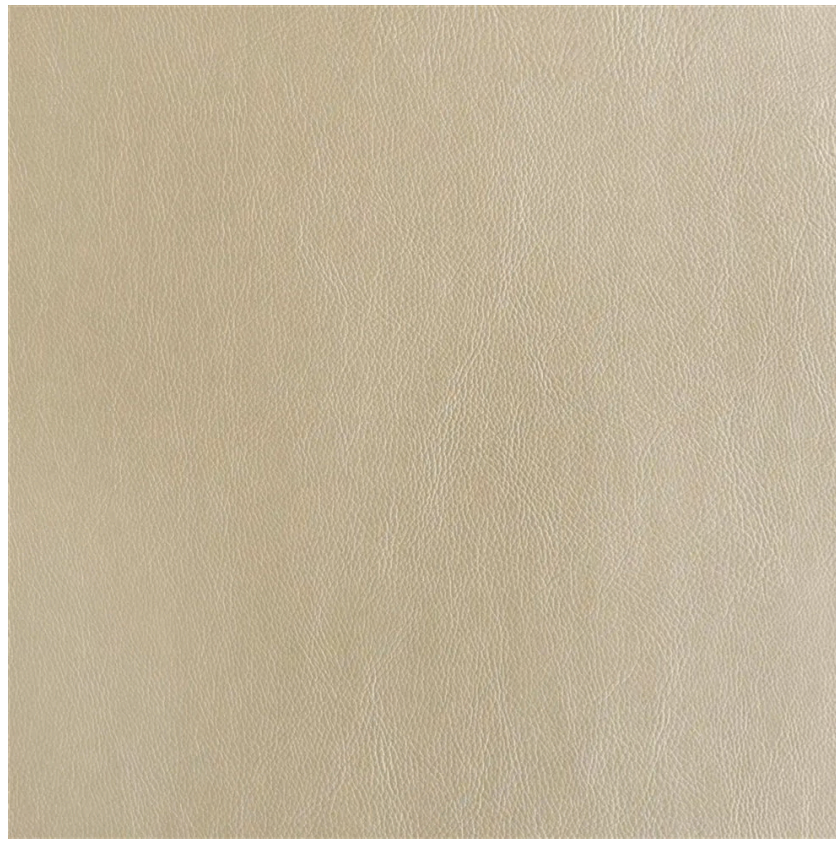
Ultra Crib5 is a versatile leather, designed to meet specific and stringent flammability requirements. The surface is buffed and embossed, and really nice to touch. It's also water repellent, stain resistant and easy to maintain due to its strong protective finish.

<b>Supplier</b>	Sørensen Leather
<b>Composition</b>	100% Protected Leather
<b>Martindale</b>	-
<b>Flammability</b>	BS EN 1021 1&2, CA TB 117-2013, BS 5852 Crib 5
<b>Environment</b>	STANDARD 100 by OEKO-TEX®, REACH, ANSI/BIFMA

Please note that the colours not included in NORR11 selection will be quoted individually.

**NORR11**





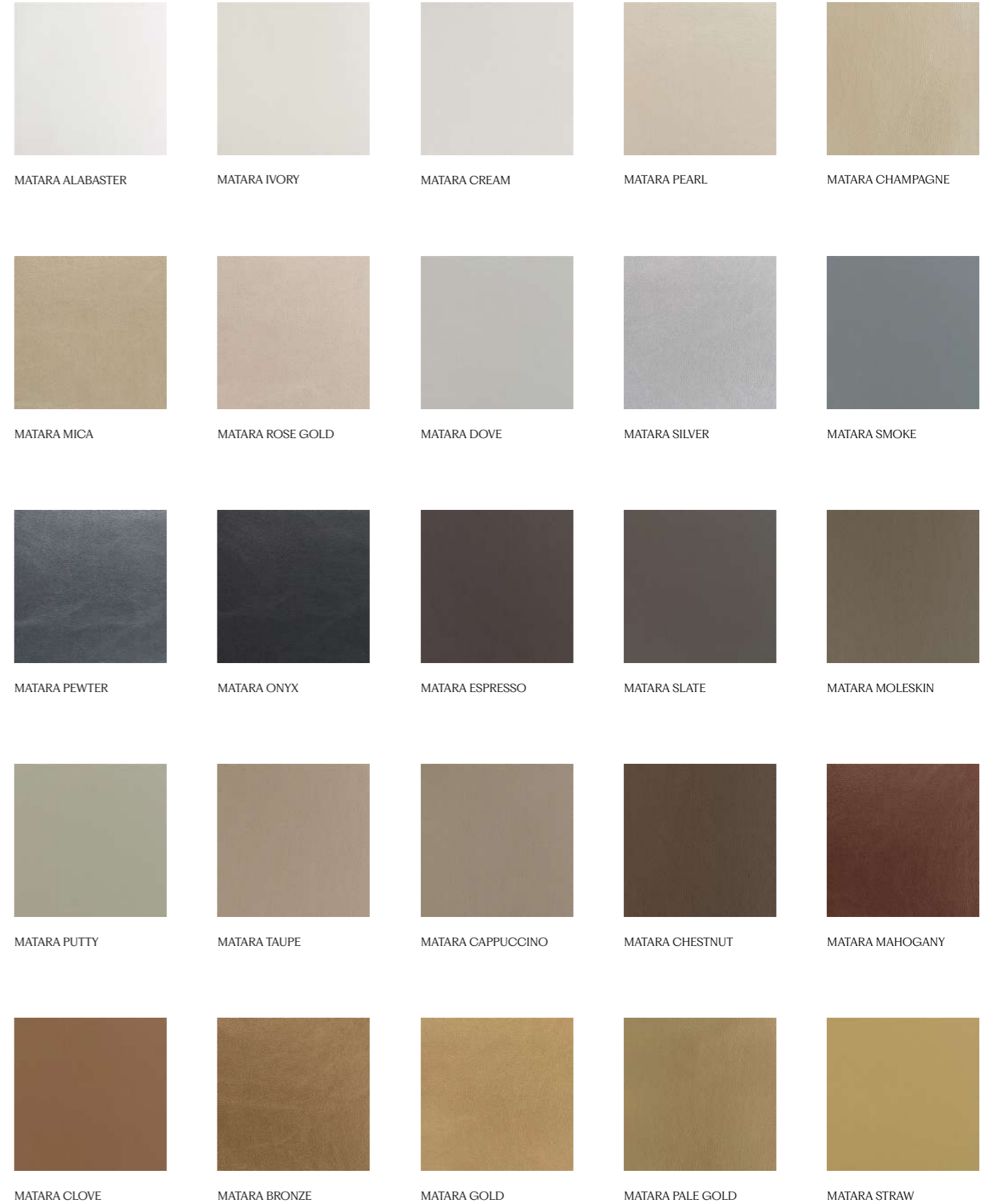
# MATARA (FAUX)

A smart, sophisticated faux leather with a naturalistic grain, soft hand, subtle sheen and a suede effect backing. Incredibly hard wearing, can be treated to most FR and IMO standards. In 54 colours, is eminently suitable for both contract and domestic usage.

<b>Supplier</b>	Designers Guild
<b>Composition</b>	72% Pvc 21% PI 7% Pu
<b>Martindale</b>	100.000
<b>Flammability</b>	BS EN 1021 1
<b>Environment</b>	-

NORR11

# MATARA (FAUX) BY DESIGNERS GUILD



MATARA ALABASTER

MATARA IVORY

MATARA CREAM

MATARA PEARL

MATARA CHAMPAGNE

MATARA MICA

MATARA ROSE GOLD

MATARA DOVE

MATARA SILVER

MATARA SMOKE

MATARA PEWTER

MATARA ONYX

MATARA ESPRESSO

MATARA SLATE

MATARA MOLESKIN

MATARA PUTTY

MATARA TAUPE

MATARA CAPPUCCINO

MATARA CHESTNUT

MATARA MAHOGANY

MATARA CLOVE

MATARA BRONZE

MATARA GOLD

MATARA PALE GOLD

MATARA STRAW





MATARA TURMERIC



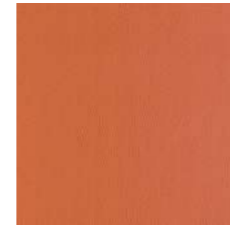
MATARA SPICE



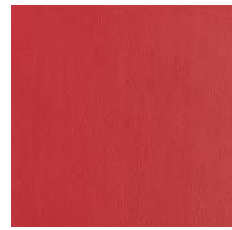
MATARA COPPER



MATARA SAFFRON



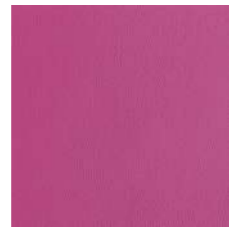
MATARA SIENNA



MATARA SCARLET



MATARA CRIMSON



MATARA FUCHSIA



MATARA BLOSSOM



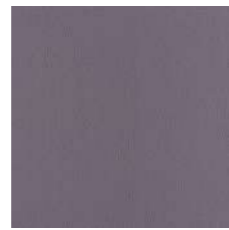
MATARA BERRY



MATARA RUSSET



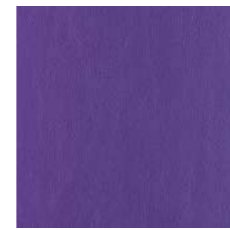
MATARA CLARET



MATARA THISTLE



MATARA AUBERGINE



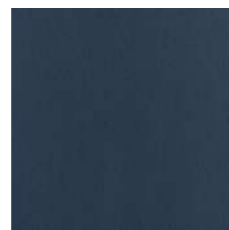
MATARA AMETHYST



MATARA SAPPHIRE



MATARA COBALT



MATARA NAVY



MATARA PETROL



MATARA AZURE



MATARA VIRIDIAN



MATARA CELADON



MATARA DUCK EGG



MATARA PERIDOT



MATARA APPLE



MATARA LEAF



MATARA FOREST



MATARA FERN



MATARA OLIVE



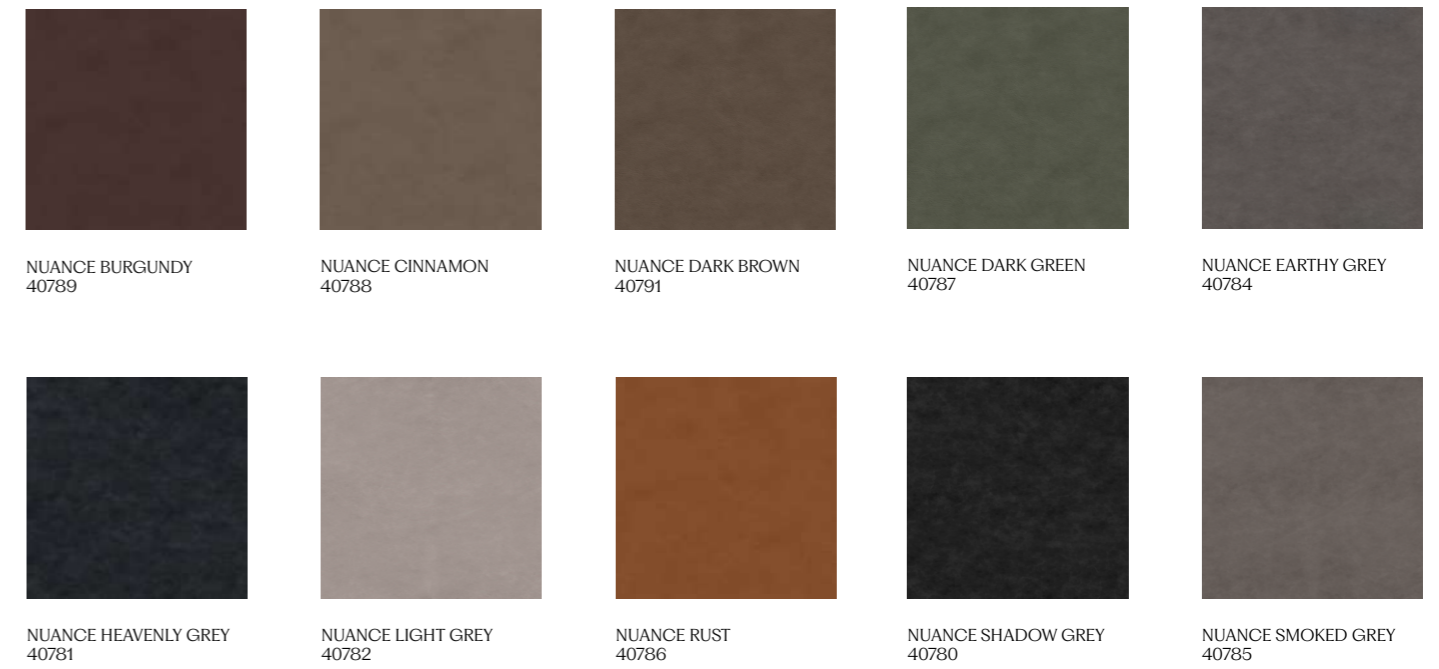


# NUANCE

Nuance has a remarkable depth and dimension that exudes authenticity, with the added advantage that it's designed to be durable. It's a new type of protected leather developed in collaboration with Space Copenhagen, where the nuances are seen in the natural texture as well as the tones. The natural patterns and imperfections are visible, reflecting the innate beauty of each hide.

<b>Supplier</b>	Sørensen Leather
<b>Composition</b>	100% Protected Leather
<b>Martindale</b>	-
<b>Flammability</b>	BS EN 1021-1 and 2, TB 117 - 2013
<b>Environment</b>	PCP, AZO dyes, Chrome VI, REACH

*Please note that the colours not included in NORR11 selection will be quoted individually.*



**NORR11**





# FLUX

Flux is a type of protected leather that resembles nubuck, with a matt look akin to neoprene. It's an innovative leather developed in collaboration with architect and designer David Thulstrup, featuring a velvety-soft surface with a muted effect that's ultra modern. In addition to all the advantages of protection, involving a very fine surface coating that's unperceivable to the eye, which renders Flux resistant to scuffing and fading.

<b>Supplier</b>	Sørensen Leather
<b>Composition</b>	100% Protected Leather
<b>Martindale</b>	-
<b>Flammability</b>	BS 5852 - 1 4.1 and 5.1, BS EN 1021-1 and 2, TB 117-2013
<b>Environment</b>	LEATHER STANDARD by OEKO-TEX®, PCP, AZO dyes, Chrome VI, REACH

Please note that the colours not included in NORR11 selection will be quoted individually.



FLUX BROWN  
40307



FLUX LIGHT GREY  
40300



FLUX DARK GREEN  
40303



FLUX GINGER  
40306



FLUX GREEN  
40310



FLUX GREY  
40301



FLUX LAVENDER  
40309



FLUX LIGHT BLUE  
40308



FLUX NATURE  
40304

**NORR11**



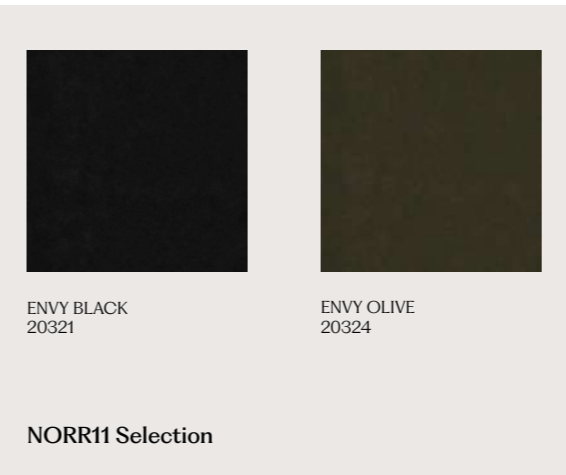


## ENVY

Envy is an accessible leather with an aura of elegance. Smooth to the touch with a slight sheen to the surface, it's a captivating leather that awakens the senses. Look closer and you can see very subtle natural markings, which are minimised via a special sanding process. Add to that a light, transparent wax that helps protect the surface and the result is a lovely feel with a brilliant sense of depth.

<b>Supplier</b>	Sørensen Leather
<b>Composition</b>	100% Aniline Leather
<b>Martindale</b>	-
<b>Flammability</b>	BS EN 1021-1 and 2, TB 117-2013
<b>Environment</b>	LEATHER STANDARD by OEKO-TEX®, PCP, AZO dyes, Chrome VI, REACH

Please note that the colours not included in NORR11 selection will be quoted individually.



**NORR11**





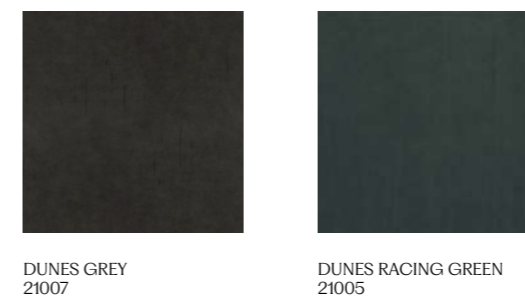
# DUNES

Run your fingers along the surface of Dunes and it feels as smooth as butter. A special process involving sanding, buffing and applying a special type of leather oil to the surface gives it that almost velvety touch. At the same time, Dunes boasts a matt look that's raw with a touch of understated elegance. Part of Dunes' extra appeal are the subtle, natural markings which bring a unique personality to each hide.

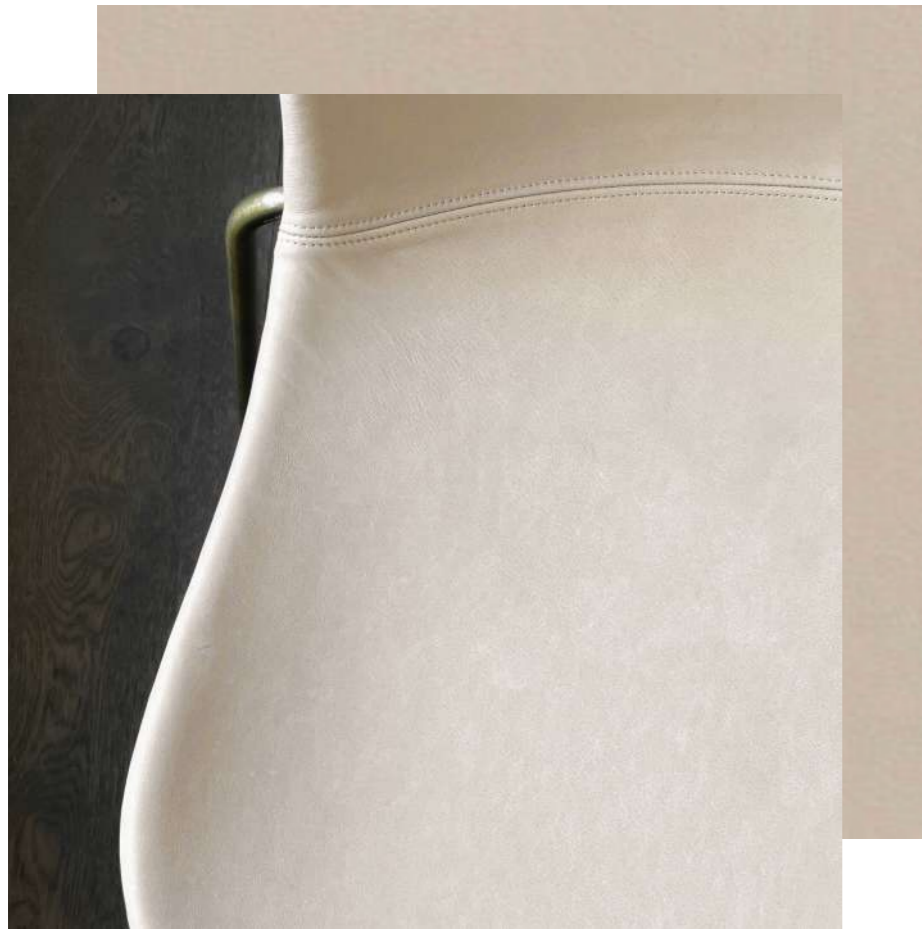
<b>Supplier</b>	Sørensen Leather
<b>Composition</b>	100% Aniline Leather
<b>Martindale</b>	-
<b>Flammability</b>	BS EN 1021 1&2, BS5852 0&1, CAL 117
<b>Environment</b>	Oeko-Tex, PCP, AZO dyes, Chrome VI, REACH

*Please note that the colours not included in NORR11 selection will be quoted individually.*

**NORR11**







# TERRA

Terra is a new type of innovative high-end leather developed in collaboration with Norm Architects, known for their thoughtful design philosophy that seeks to engage the senses and enrich the quality of life. It's an extremely soft aniline leather featuring a silky-matt surface with a subtle shine and a velvety tactile feel that evokes one's senses, offering a touch of modern sophisticated elegance.

<b>Supplier</b>	Sørensen Leather
<b>Composition</b>	100% Aniline Leather
<b>Martindale</b>	-
<b>Flammability</b>	BS EN 1021-1 and 2, TB 117-2013
<b>Environment</b>	PCP, AZO dyes, Chrome VI, REACH

*Please note that the colours not included in NORR11 selection will be quoted individually.*

# TERRA

BY SØRENSEN LEATHER



**NORR11**





# SPECTRUM

Spectrum is a soft leather with a subtle texture that looks more uniform, thanks to a light surface finish that works to protect the leather from dirt, stains and any fading resulting from exposure to light. Spectrum is ideal for designers and architects, as it can be used in a broad range of industries. From commercial spaces to business settings, to hotels and restaurants, public buildings and the healthcare sector, as well as cultural institutions and private residences.

<b>Supplier</b>	Sørensen Leather
<b>Composition</b>	100% Semi-Aniline Leather
<b>Martindale</b>	-
<b>Flammability</b>	BS EN 1021 1&2, BS5852 0&1, CAL 117
<b>Environment</b>	PCP, AZO dyes, Chrome VI, REACH

*Please note that the colours not included in NORR11 selection will be quoted individually.*



SPECTRUM ALMOND  
30150



SPECTRUM BARK  
30148



SPECTRUM AGAVE  
30098



SPECTRUM AUTUMN  
30099



SPECTRUM APRICOT  
30122



SPECTRUM BRANDY  
30155



SPECTRUM BRICK  
30199



SPECTRUM BURN  
30092



SPECTRUM CAMEL  
30106



SPECTRUM  
BURNED ORANGE  
30173



SPECTRUM CORN  
30103



SPECTRUM CREAM  
30101



SPECTRUM GINGER  
30096



SPECTRUM COGNAC  
30107



SPECTRUM EARTH  
30149

**NORR11**





SPECTRUM EGGSHELL  
30100



SPECTRUM HONEY  
30102



SPECTRUM ICE  
30075



SPECTRUM IVORY  
30161



SPECTRUM MARBLE  
30105



SPECTRUM GLACIER  
30158



SPECTRUM SAND  
30076



SPECTRUM NOUGAT  
30095



SPECTRUM GRANITE  
30156



SPECTRUM MOON  
30077



SPECTRUM CLOUD  
30079



SPECTRUM GREY  
30131



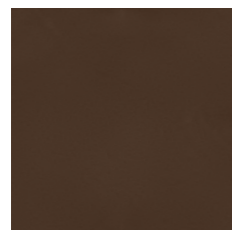
SPECTRUM CONCRETE  
30082



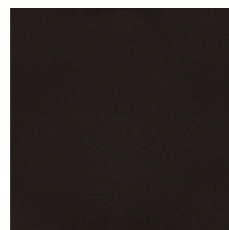
SPECTRUM LAVA  
30132



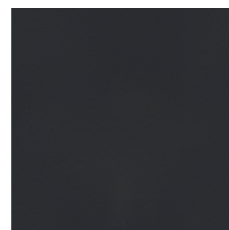
SPECTRUM TOBACCO  
30111



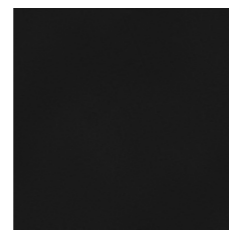
SPECTRUM CINNAMON  
30146



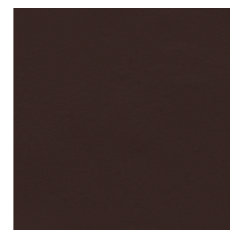
SPECTRUM COFFEE  
30112



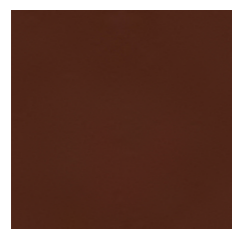
SPECTRUM ANTHRAZITE  
30134



SPECTRUM BLACK  
30114



SPECTRUM BROWN  
30087



SPECTRUM RUST  
30109



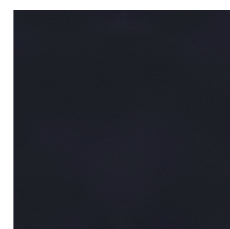
SPECTRUM KIWI  
30129



SPECTRUM CACTUS  
30081



SPECTRUM GREEN  
30167



SPECTRUM ADRIA  
30137



SPECTRUM BLACKBERRY  
30115



SPECTRUM CHOCOLATE  
30113



SPECTRUM CORAL  
30118



SPECTRUM DARK GREY  
30162



SPECTRUM DARK BLUE  
30085



SPECTRUM FOREST  
30127



SPECTRUM HAVANA  
30110



SPECTRUM MOSS  
30128



SPECTRUM SPRING  
30080



SPECTRUM MANGO  
30120



SPECTRUM MANDARIN  
30089



SPECTRUM SUNSET  
30090



SPECTRUM LIGHT TAN  
30152



SPECTRUM TOFFEE  
30154



SPECTRUM MUSHROOM  
30169



SPECTRUM MUSTARD  
30104



SPECTRUM SAFRAN  
30170



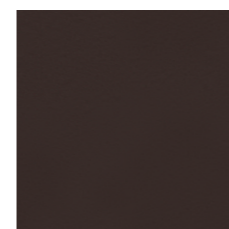
SPECTRUM TERRA  
30094



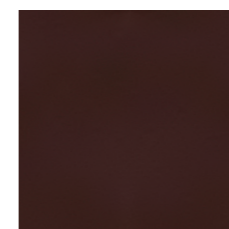
SPECTRUM MOCCA  
30153



SPECTRUM LAVENDER  
30088



SPECTRUM MUD  
30086



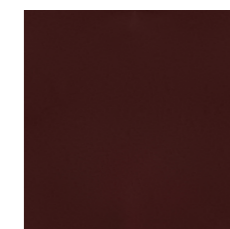
SPECTRUM RUBY  
30116



SPECTRUM MIX  
30147



SPECTRUM TAN  
30108



SPECTRUM WINE RED  
30117





SPECTRUM SANDSTONE  
30133



SPECTRUM BOTTLE GREEN  
30083



SPECTRUM LEAF  
30168



SPECTRUM MARINE  
30139



SPECTRUM OCEAN  
30138



SPECTRUM PAPAYA  
30121



SPECTRUM OYSTER  
30157



SPECTRUM PARCHMENT  
30151



SPECTRUM RED BROWN  
30172



SPECTRUM PARK  
30097



SPECTRUM PETROLEUM  
30126



SPECTRUM ROYAL  
30166



SPECTRUM SAFARI  
30145



SPECTRUM SPACE  
30078



SPECTRUM SILVER GREY  
30130



SPECTRUM STROM  
30084



SPECTRUM SUMMER  
30091



SPECTRUM TERRACOTTA  
30171



SPECTRUM WALNUT  
30093



SPECTRUM WHITE  
30140

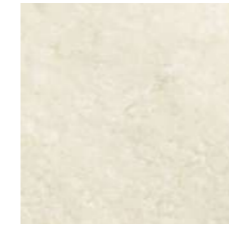
**NORR11**





# SHEEPSKIN

BY SKANDILOCK



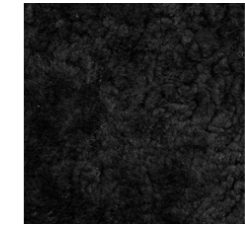
02 OFF WHITE



09 MOONLIGHT



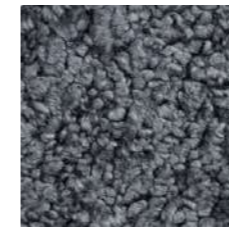
08 HONEY



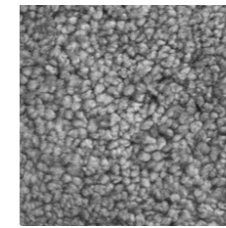
01 BLACK



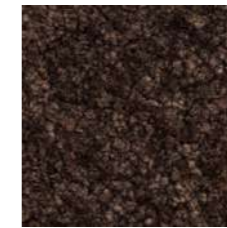
04 ANTHRACITE



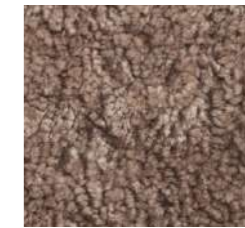
14 CHARCOAL



22 SCANDINAVIAN GREY



15 ESPRESSO



07 SAHARA

## SHEEPSKIN

Skandilock Curly 17mm is developed for furniture upholstery but can also be used for different furnishing assignments. The wool has a curly texture and is high in density which makes it durable and soft.

<b>Supplier</b>	Skandilock
<b>Composition</b>	100% Sheepskin
<b>Martindale</b>	-
<b>Flammability</b>	EN1021-1&2, CAL 117, FAR §23.853 (AUS)
<b>Environment</b>	-

**NORR11**



# WOOD



OAK NATURAL



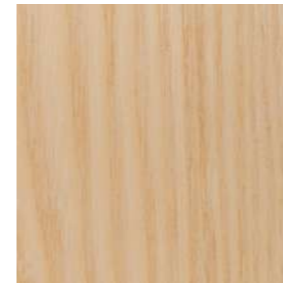
OAK LIGHT SMOKED



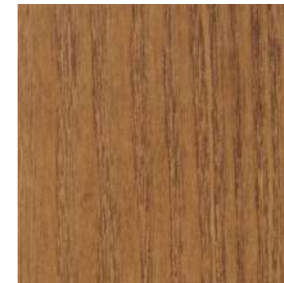
OAK DARK SMOKED



OAK BLACK



ASH NATURAL



ASH LIGHT SMOKED



ASH DARK SMOKED



ASH BLACK

# WOOD

Wood is a natural material and may vary from batch to batch. Variations in wood structure and colour are part of the timber characteristics of the wood and applying lacquer will further enhance these characteristics.

All our wood is FSC certified, sourced within the EU and coated with a water based lacquer.

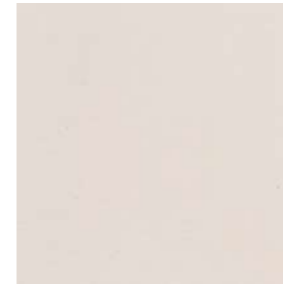
Customised stain colours can be requested and must be approved and priced prior to production.

**NORR11**





# METAL



POWDER COATED STEEL (DUKE)  
Antique White (PANTONE 12-0304 TPG)



POWDER COATED STEEL (DUKE)  
Stone (PANTONE 16-0806 TPG)



POWDER COATED STEEL (DUKE)  
Earth Black (PANTONE 19-0405 TPG)



POWDER COATED STEEL (DUKE)  
Bronze (PANTONE 19-0812 TPG)



POWDER COATED STEEL (DUKE)  
Lacquered  
Obsidian Black (PANTONE 19-4203 TPG)



POWDER COATED STEEL (DUKE)  
Lacquered  
Maroon (PANTONE 19-1627 TPG)



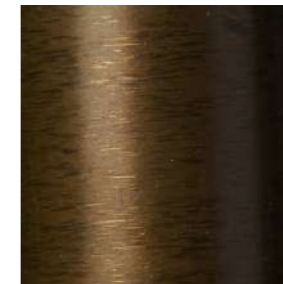
POWDER COATED STEEL (DUKE)  
Lacquered  
Mineral (PANTONE 12-5201 TPG)



STAINLESS STEEL (MAN)



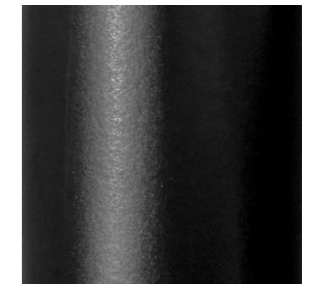
BLACK STEEL (LANGUE)



BRASS (LANGUE / NEW WAVE)



RAW CAST ALUMINIUM (GHOST)



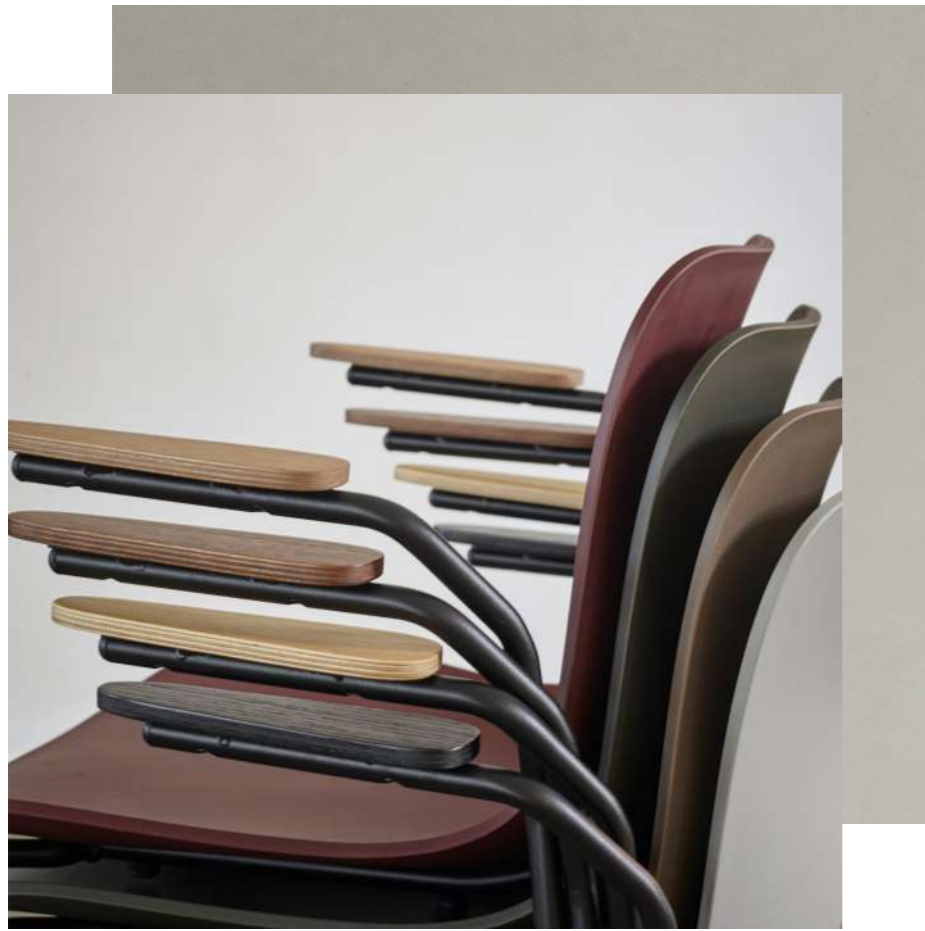
POWDER COATED ALUMINIUM (JFK)

# METAL

High quality metals of steel and aluminium are used in some of our lighting and tables collections. The powdercoated surfaces are spray painted in a powder coating facility to achieve a strong and resistant surface with a smooth and even color. The plated metal colors are brushed after the plating process to achieve a mat metallic finish.

NORR11

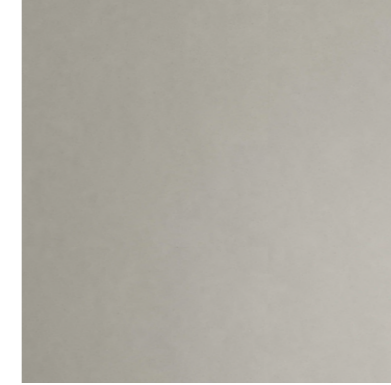




# POLYPROPYLENE



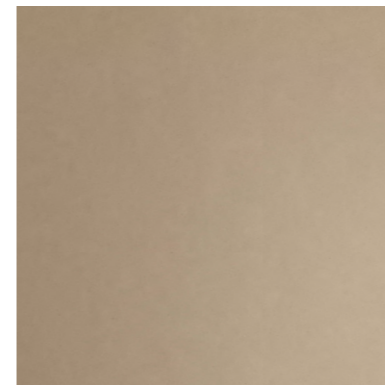
ANTHRACITE BLACK  
PANTONE 19-0303 TPX



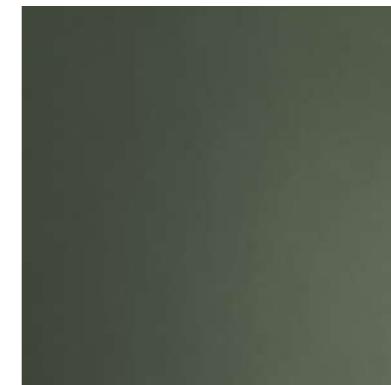
FLINT GREY  
PANTONE 16-5803 TPX



BURGUNDY  
RAL 3007



ECRU  
RAL1019



ARMY GREEN  
RAL 6006

# POLYPROPYLENE

The seat shells for the Langue series are molded from a highly durable glass fiber reinforced polypropylene.

Customised colours are available with minimum order quantity of 300 seats and are subject to special pricing.

**NORR11**





# STONE & CONCRETE

Finest natural stones and fiber concrete are used in some of our lighting and tables collections.

Our travertine and marble are handpicked according to our high standards of color and quality. The white marble is polished to achieve a fine balance between a somewhat shiny and mat surface. The grey marble remains unpolished to create an almost concrete looking surface. The surface of the travertine is polished and untreated.

Our lightweight reinforced fiber concrete is made from a mixture of concrete mass with polyester fibers. Casted in a mould, each product has a unique surface texture with small marks and variations from the casting procedure.

NORR11

# STONE & CONCRETE



FIBER CONCRETE (GEAR / QUARTZ)  
Chalk (PANTONE 11-0601 TPG)



FIBER CONCRETE (GEAR / QUARTZ)  
Earth (PANTONE 19-1101 TPG)



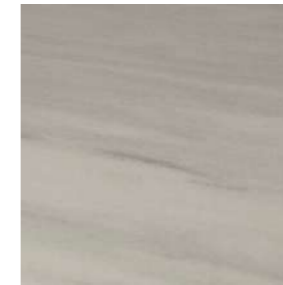
FIBER CONCRETE (QUARTZ)  
Mineral (PANTONE 13-6105 TPG)



FIBER CONCRETE (QUARTZ)  
Maroon (PANTONE 19-2118 TPG)



TRAVERTINE (CUBISM / SOHO)



WHITE MARBLE (MAIDEN)



UNTREATED GREY MARBLE (LINE)



WHITE MARBLE (LINE)







