

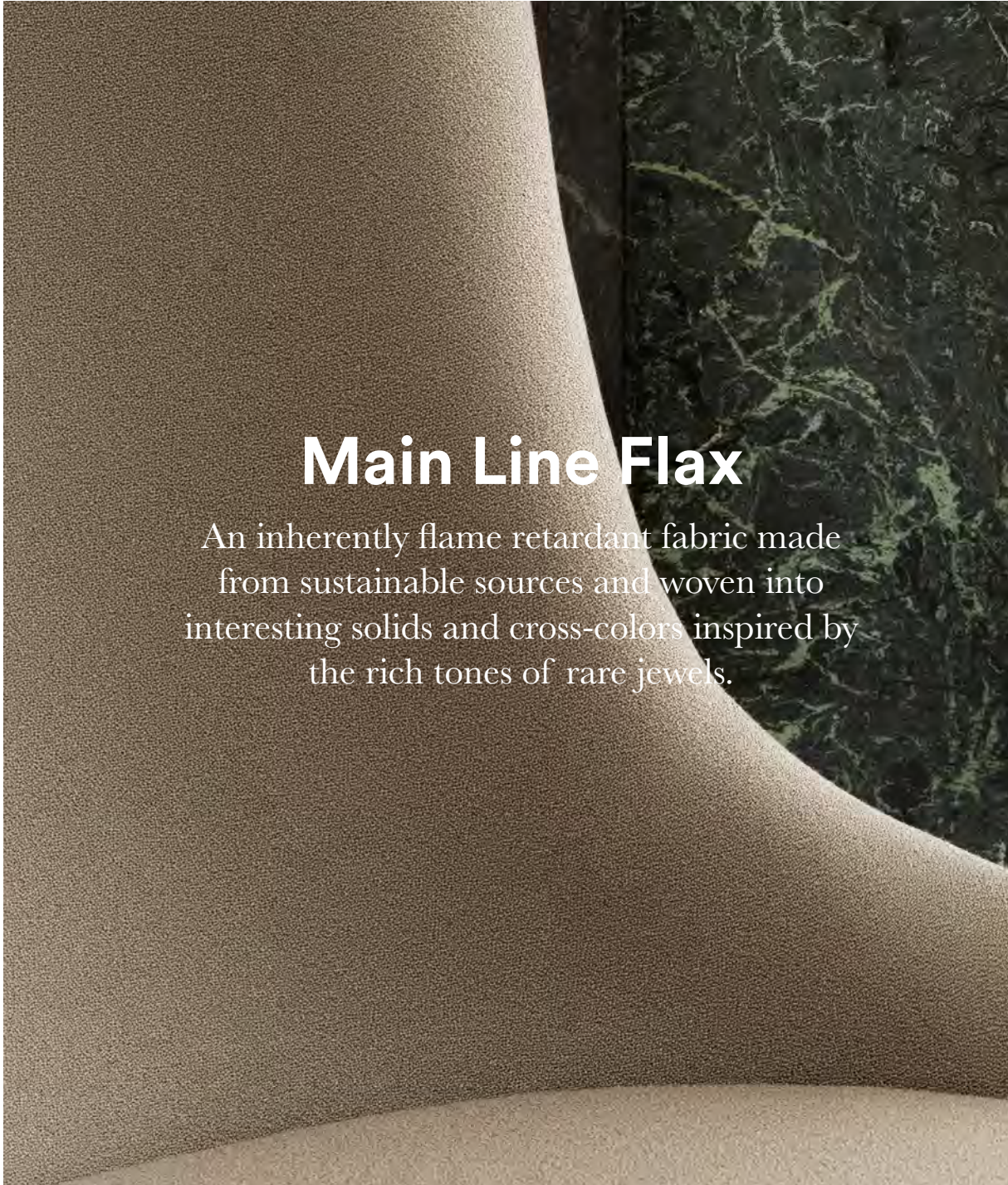
Textiles

We have carefully curated our selection of textiles from some of the best suppliers on the market who operate to the highest environmental standards.



normann

C O P E N H A G E N



Main Line Flax

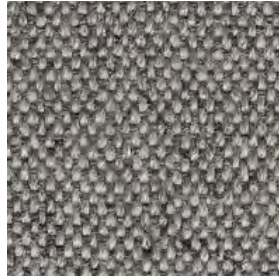
An inherently flame retardant fabric made from sustainable sources and woven into interesting solids and cross-colors inspired by the rich tones of rare jewels.

Manufacturer	Camira	Fastness to rubbing	Wet: 3, Dry: 4 (ISO 105 - X12)
Composition	70% virgin wool, 30% flax	Light Fastness	5 (ISO 105 - B02)
Environment	Certified to the EU Ecolabel Certified to Indoor Advantage™ "Gold" Rapidly renewable and compostable Made from wool and bast fiber	Flammability	EN 1021-1&2 Cigarette & Match BS 7176 Low Hazard BS 5852 Ignition Source 5 BS 7176 Medium Hazard NF D 60-013 ÖNORM B 3825 & A 3800-1 (58kg/m3 CMHR Foam) UNI 9175 Classe 1 IM BS 5867-2: Type B Curtains & Drapes
Martindale	Heavy duty / 10 year guarantee. Independently certified to ≥50.000 Martindale cycles		
Weight	437 g/m2 ±5%		

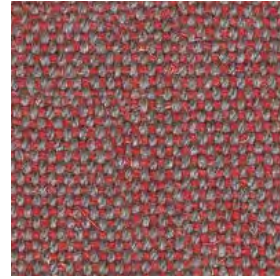
Textiles Main Line Flax



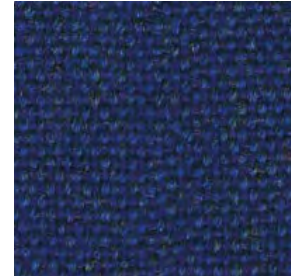
Aldgate
MLF01



Archway
MLF02



Barbican
MLF03



Holborn
MLF05



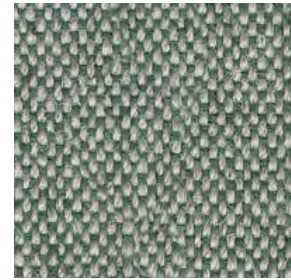
Kilburn
MLF06



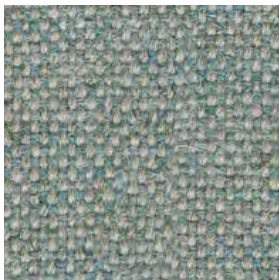
Kensington
MLF07



Lambeth
MLF08



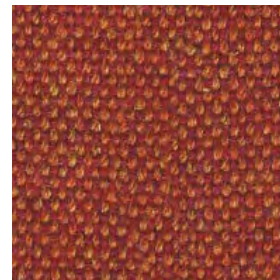
Monument
MLF09



Newbury
MLF10



Morden
MLF12



Leyton
MLF13



Parsons
MLF14



Stockwell
MLF15



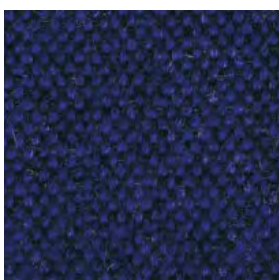
Temple
MLF16



Tooting
MLF17



Tufnell
MLF18



Victoria
MLF19



Upminster
MLF20



Waterloo
MLF21

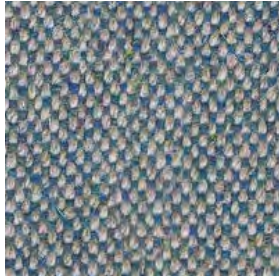


Westminster
MLF22

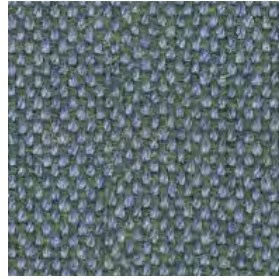
Textiles Main Line Flax



Bank
MLF23



Bayswater
MLF24



Bethnal
MLF25



Camden
MLF26



Edgware
MLF28



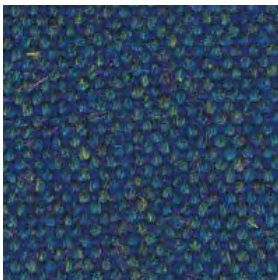
Farrington
MLF29



Goldhawk
MLF31



Greenford
MLF32



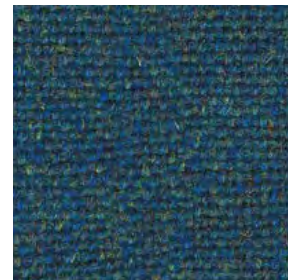
Pimlico
MLF34



Brompton
MLF35



Tower
MLF36



Stanmore
MLF37



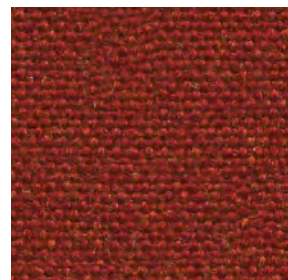
Northfields
MLF40



Alperton
MLF43



Balham
MLF44



Barking
MLF45



Blackwall
MLF46



Brixton
MLF47



Chigwell
MLF48



Clapham
MLF49

Textiles Main Line Flax



Embarkment
MLF50



Epping
MLF51



Greenwich
MLF52



Hampstead
MLF53



Harrow
MLF54



Hornchurch
MLF55



Kentish
MLF56



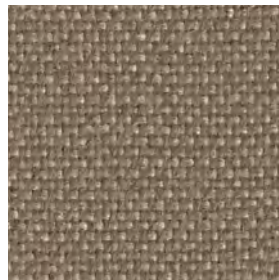
Moorgate
MLF57



Perivale
MLF59



Pinner
MLF60



Redbridge
MLF61



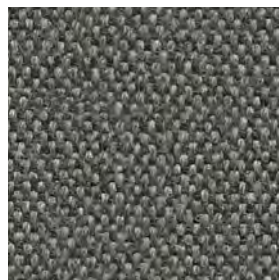
Richmond
MLF62



Shadwell
MLF63



Stratford
MLF64



Watford
MLF65



Whitechapel
MLF66



Woodford
MLF67



Synergy

A soft handle wool blend fabric featuring exquisite fiber dyed shades and sumptuous piece dyed solids.

Manufacturer	Camira	Fastness to rubbing	Wet: 3, Dry: 4 (ISO 105 - X12)
Composition	95% virgin wool, 5% polyamide	Light Fastness	5 (ISO 105 - B02)
Environment	Certified to the EU Ecolabel Certified to Indoor Advantage™ "Gold"	Flammability	EN 1021 - 1&2 Cigarette & Match BS 7176 Low Hazard NF D 60-013 ÖNORM B 3825 & A 3800-1 (58 kg/m ³ CMHR Foam) UNI 9175 Classe 1 IM EN 13501-1 Adhered Class D, s1, d0 EN 13501-1 Un-adhered Class E, s2, d0 BS 5852 Ignition Source 5 when FR treated BS 7176 Medium Hazard when FR treated EN 13501-1 Adhered Class B, s1, d0 when FR treated EN 13501-1 Un-adhered Class D, s2, d0 when FR treated BS 5867-2: Type B Curtains & Drapes when FR treated
Abrasion resistance	Heavy duty / 10 year guarantee. Independently certified to ≥100.000 Martindale cycles		
Weight	400 g/m ² ±5%		

Textiles Synergy



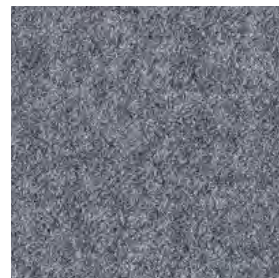
Venture
LDS05



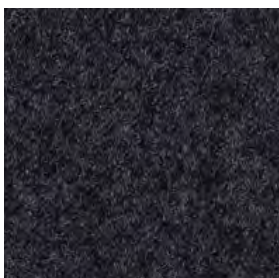
Fate
LDS07



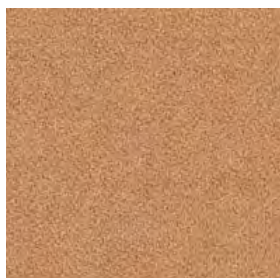
Serendipity
LDS08



Partner
LDS16



Mix
LDS17



Loop
LDS18



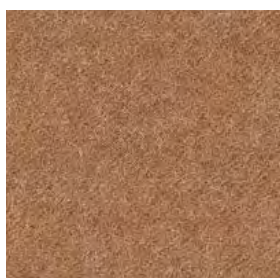
Chain
LDS19



Level
LDS20



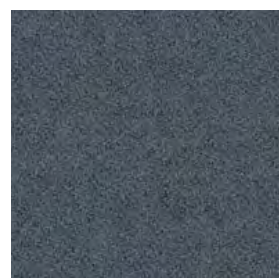
Team
LDS21



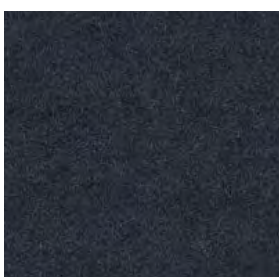
Frame
LDS22



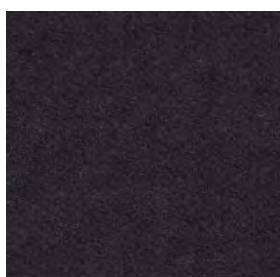
Bracket
LDS23



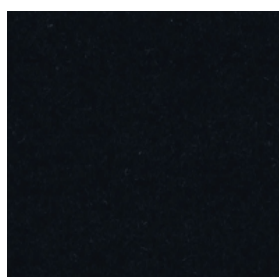
Bond
LDS24



Compound
LDS25



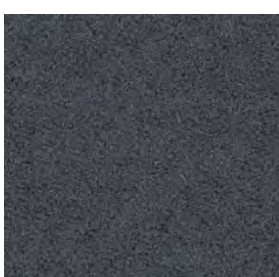
Bridge
LDS26



Seek
LDS27



Lateral
LDS28



Hook
LDS29



Pair
LDS31



Affix
LDS32



Tag
LDS33

Textiles Synergy



Wed
LDS34



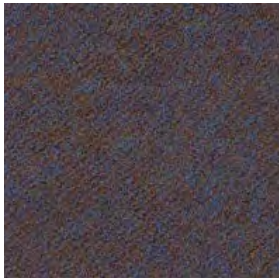
Chemistry
LDS35



Medley
LDS36



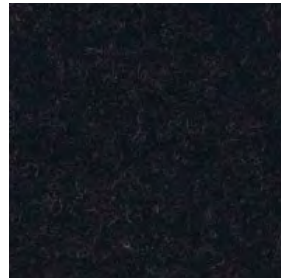
Linea
LDS37



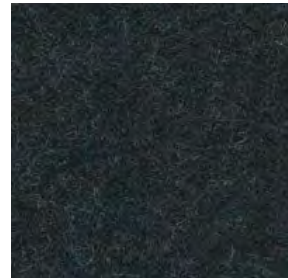
Unity
LDS38



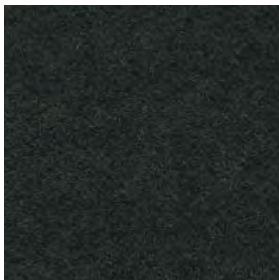
Collective
LDS39



Co-operate
LDS40



Couple
LDS41



Intertwine
LDS42



Marry
LDS43



Relate
LDS44



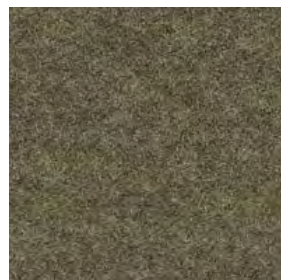
Summon
LDS45



Gather
LDS46



Integrate
LDS47



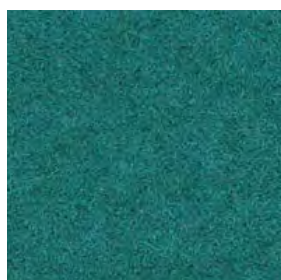
Interfuse
LDS48



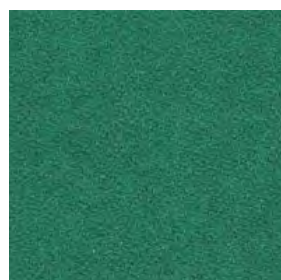
Append
LDS49



League
LDS50



Kindness
LDS51

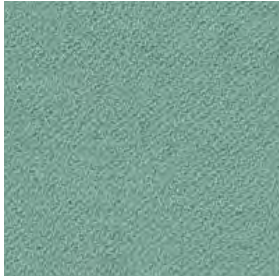


Comply
LDS52

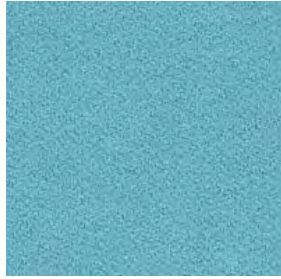


Pact
LDS53

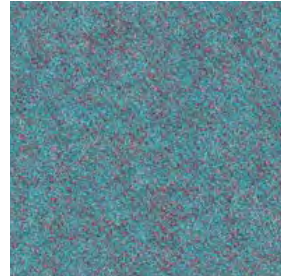
Textiles Synergy



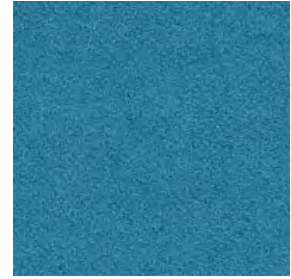
Regard
LDS54



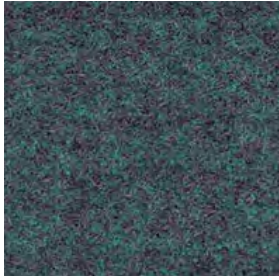
Support
LDS55



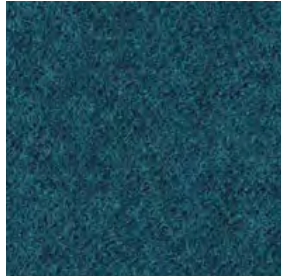
Kinship
LDS56



Engage
LDS57



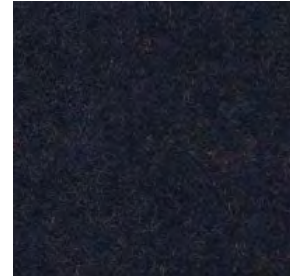
Family
LDS58



Group
LDS59



Accord
LDS60



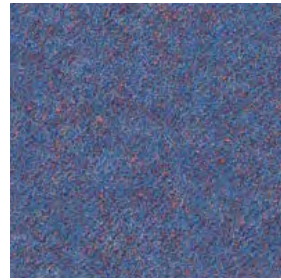
Assemble
LDS61



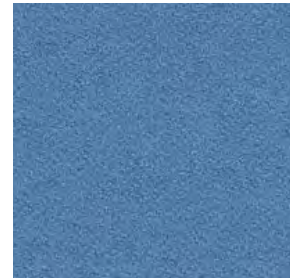
Alike
LDS62



Guild
LDS63



Order
LDS64



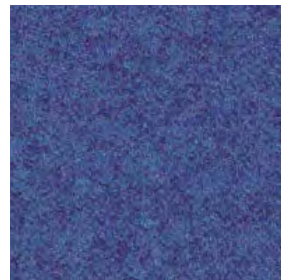
Huddle
LDS65



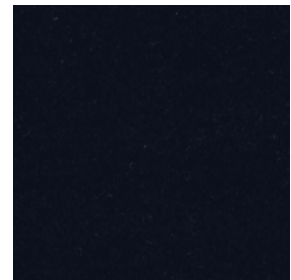
Fellowship
LDS66



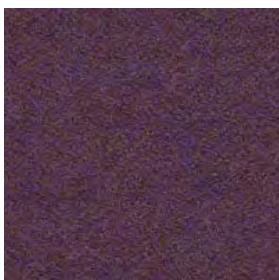
Warmth
LDS67



Collaborate
LDS68



Sync
LDS69



Together
LDS70



Open
LDS71



Compose
LDS72

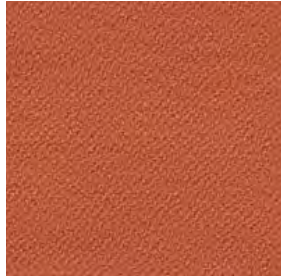


Work
LDS73

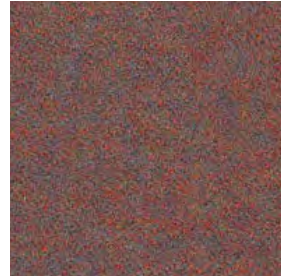
Textiles Synergy



Affinity
LDS74



Contribution
LDS75



Success
LDS76



Combo
LDS77



Cordial
LDS78



Amiable
LDS79



Apt
LDS80



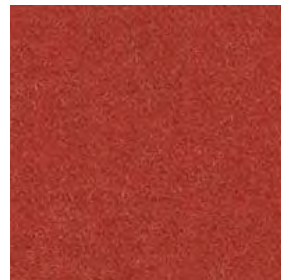
Similar
LDS81



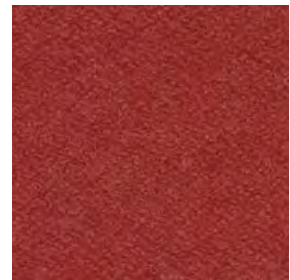
Likeness
LDS82



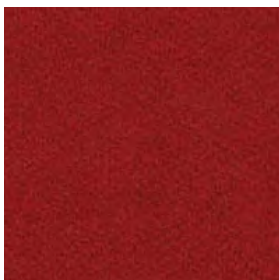
Congregate
LDS83



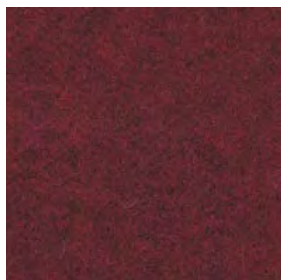
Mutual
LDS84



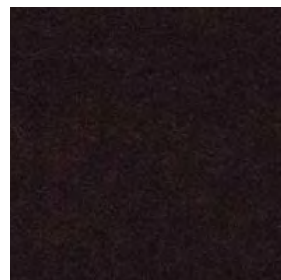
Share
LDS85



Global
LDS86



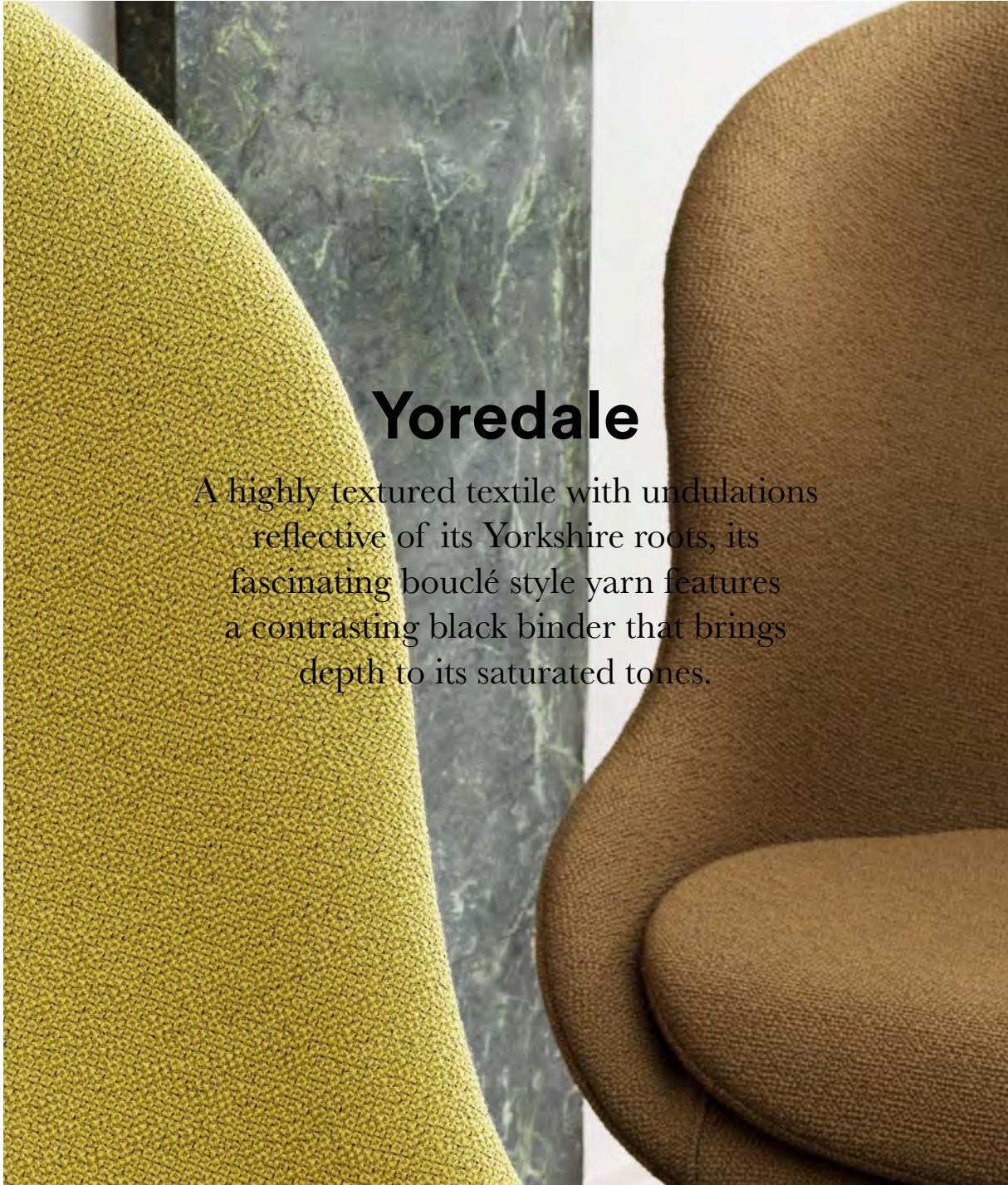
Values
LDS87



Process
LDS88



Hyg lounge chair low in Camira Synergy/Bracket
with oak lacquered legs

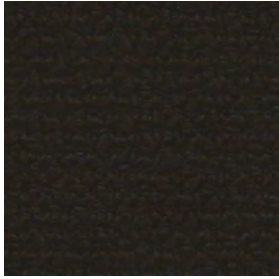


Yoredale

A highly textured textile with undulations reflective of its Yorkshire roots, its fascinating bouclé style yarn features a contrasting black binder that brings depth to its saturated tones.

Manufacturer	Camira	Fastness to rubbing	Wet: 4, Dry: 4 (ISO 105 - X12)
Composition	95% wool, 3% polyester, 2% polyamide	Light Fastness	5 (ISO 105 - B02)
Environment	Certified to Indoor Advantage™ "Gold" Nonmetallic dyestuffs	Flammability	EN 1021 - 1&2 Cigarette & Match BS 7176 Low Hazard ÖNORM B 3825 & A 3800-1 (58kg/m ³ CMHR Foam) UNI 9175 Classe 1 IM BS 5852 Ignition Source 5 when FR treated BS 7176 Medium Hazard when FR treated
Abrasion resistance	Heavy duty / 10 year guarantee. Independently certified to ≥50.000 Martindale cycles		
Weight	700 g/m ² ±5%		

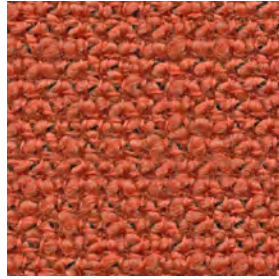
Textiles Yoredale



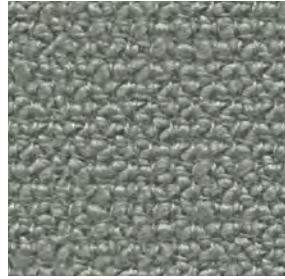
Buckden
UDA01



Kidstone
UDA02



Askrigg
UDA03



Hardraw
UDA04



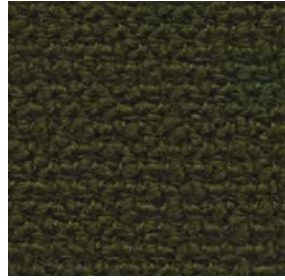
Simonstone
UDA05



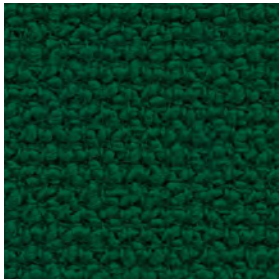
Thoralby
UDA06



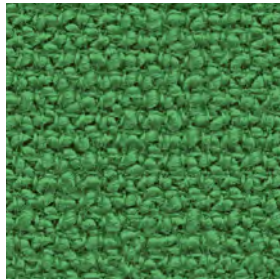
Carperby
UDA07



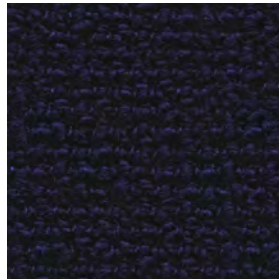
Gayle
UDA08



Thornton
UDA09



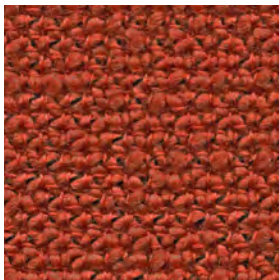
Cray
UDA10



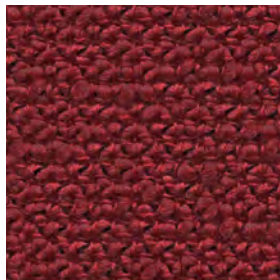
Fossdale
UDA11



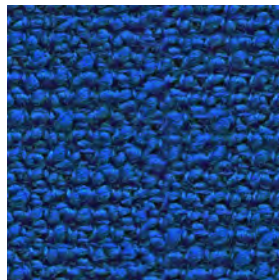
Woodale
UDA12



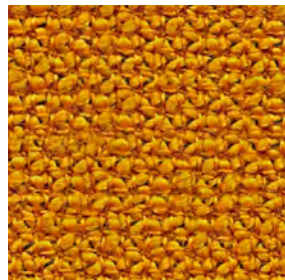
Walden
UDA13



Sedbusk
UDA14



Litton
UDA15



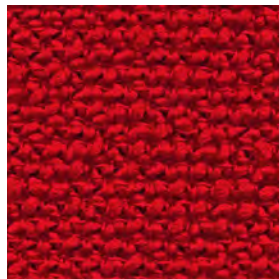
Nidd
UDA16



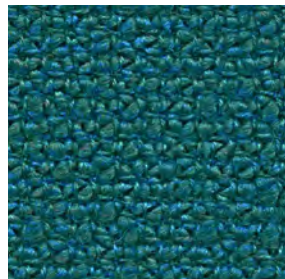
Ribble
UDA17



Wharfe
UDA18

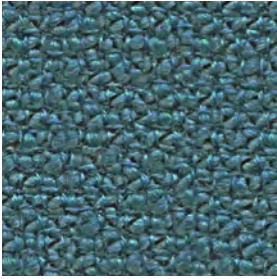


Ripley
UDA19

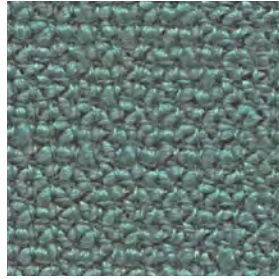


Darley
UDA20

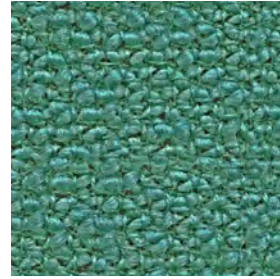
Textiles Yoredale



Dacre
UDA21



Burnsall
UDA22



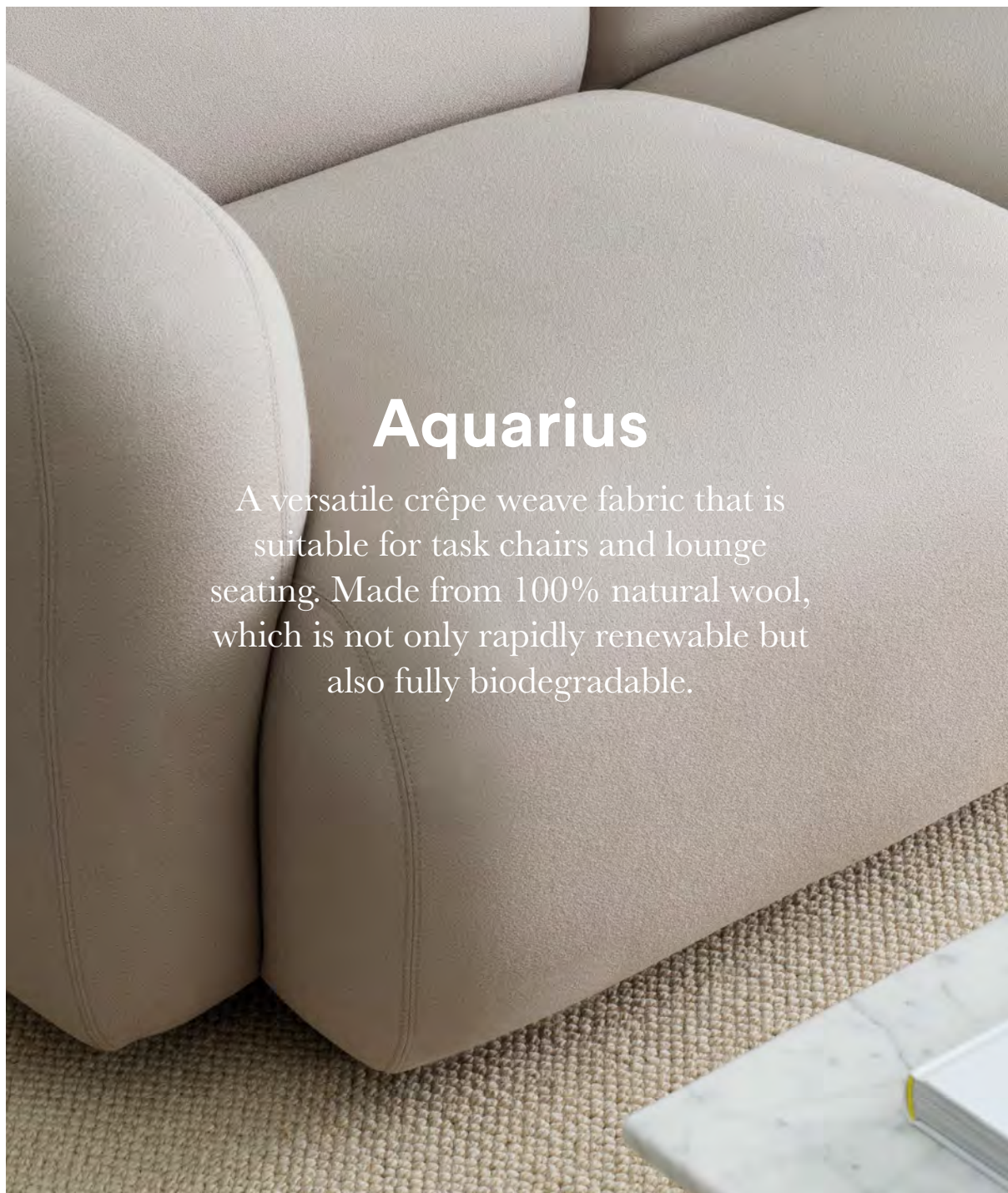
Cracoe
UDA23



Woden
UDA24



Leyburn
UDA25



Aquarius

A versatile crêpe weave fabric that is suitable for task chairs and lounge seating. Made from 100% natural wool, which is not only rapidly renewable but also fully biodegradable.

Manufacturer	Camira	Fastness to rubbing	Wet: 4, Dry: 4 (ISO 105 - X12)
Composition	100% virgin wool	Light Fastness	5 (ISO 105 - B02)
Environment	Certified to Indoor Advantage™ "Gold" Rapidly renewable and compostable Nonmetallic dyestuffs	Flammability	EN 1021-1&2 Cigarette & Match BS 7176 Low Hazard UNI 9175 Classe 1 IM BS 5852 Ignition Source 5 when FR treated BS 7176 Medium Hazard when FR treated BS 5867-2 Type B Curtains & Drapes when FR treated
Abrasion resistance	Heavy duty / 10 year guarantee. Independently certified to ≥50.000 Martindale cycles		
Weight	370 g/m2 ±5%		

Textiles Aquarius



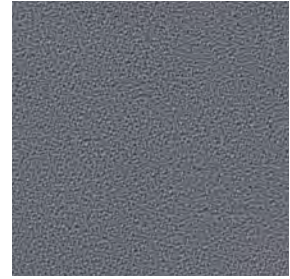
Heron
JA001



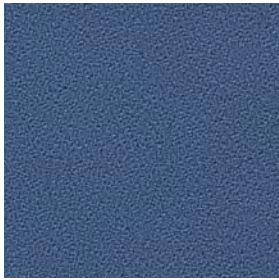
Pitch
JA002



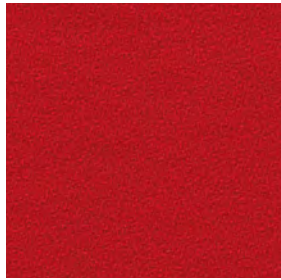
Mariner
JA016



Rhino
JA022



Porcelain
JA024



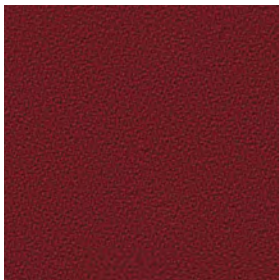
Jezebel
JA027



Paderborn
JA047



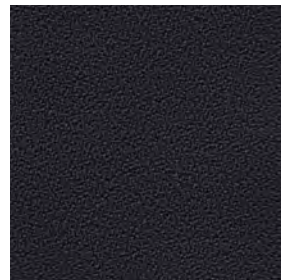
Biscay
JA059



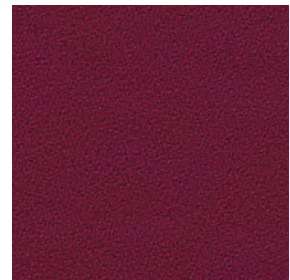
Vermillion
JA062



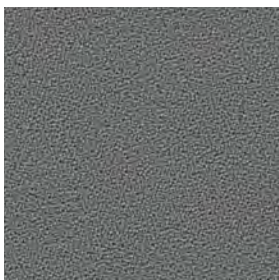
Amber
JA068



Swart
JA069



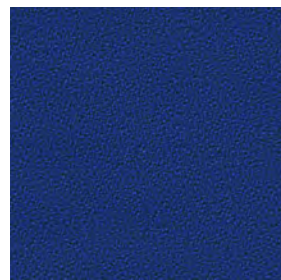
Poison
JA084



Mushroom
JA125



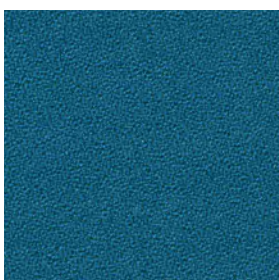
Purple
JA157



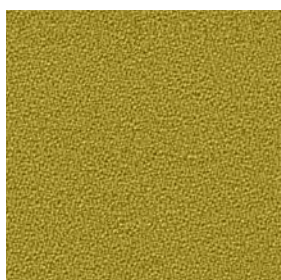
Smurf
JA159



Tambourine
JA183



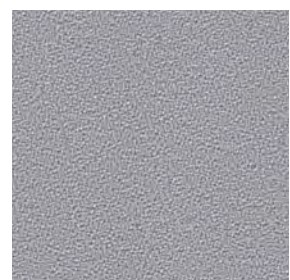
Manta
JA194



Courgette
JA201



Ceres
JA409

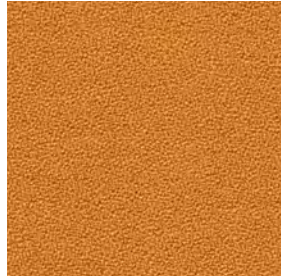


Aristotle
JA416

Textiles Aquarius



Cherry
JA419



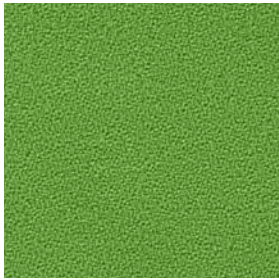
Zippy
JA426



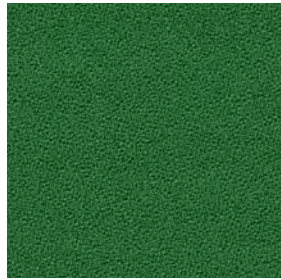
Circus
JA428



Vico
JA435



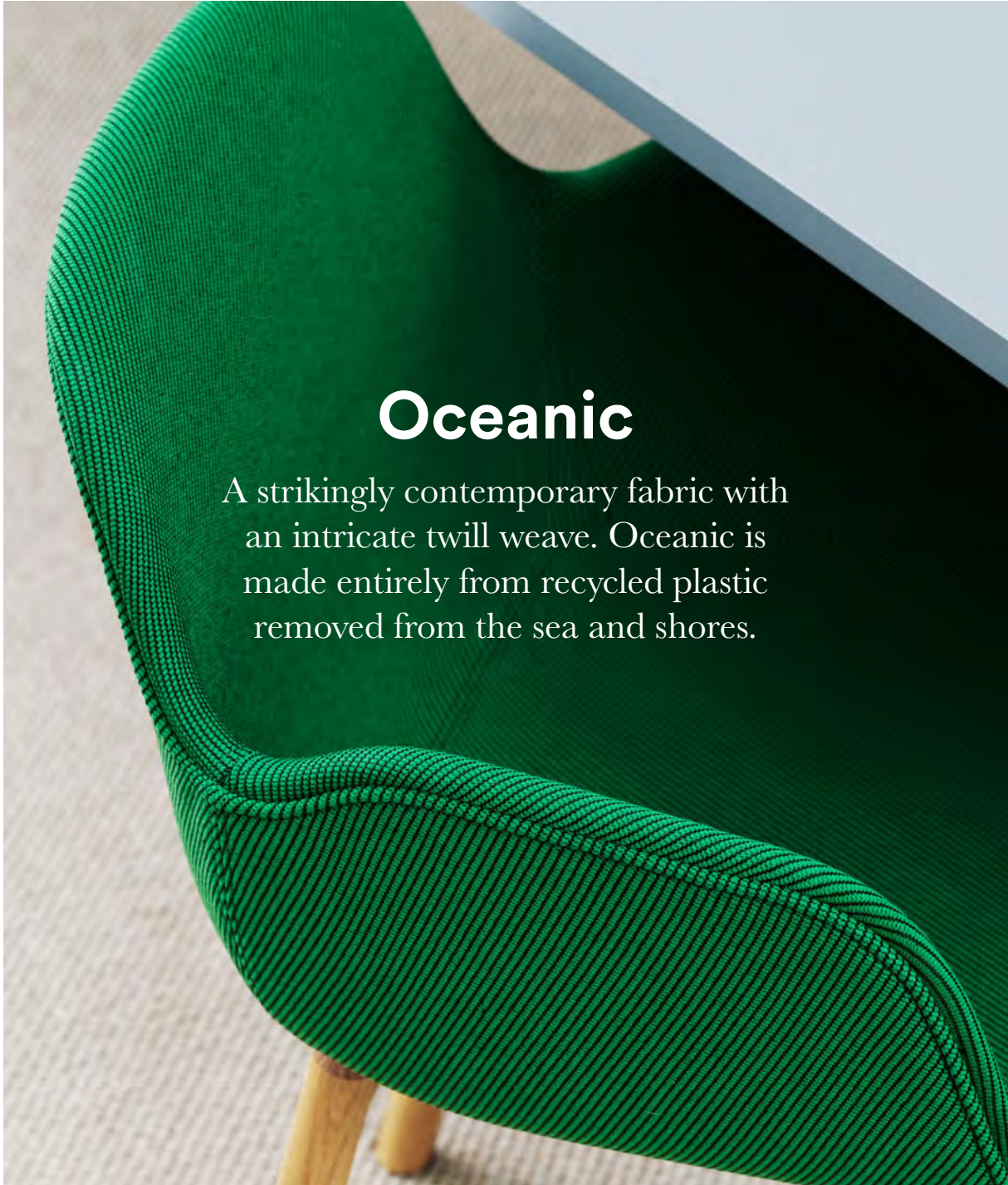
Tombola
JA442



Chomsky
JA443



Spinoza
JA448

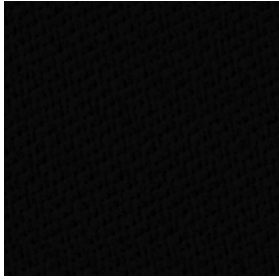


Oceanic

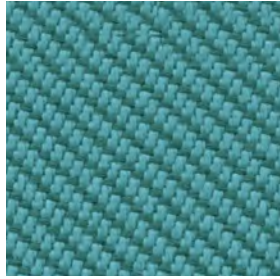
A strikingly contemporary fabric with an intricate twill weave. Oceanic is made entirely from recycled plastic removed from the sea and shores.

Manufacturer	Camira	Fastness to rubbing	Wet: 4, Dry: 4 (ISO 105 - X12)
Composition	100% post-consumer recycled polyester, including 50% SEAQUAL yarn.	Light Fastness	5 (ISO 105 - B02) OOC16: 4/5 (ISO 105 - B02)
Environment	Certified to OEKO-TEX® Standard 100 Certified to Indoor Advantage™ Gold Made from 100% post-consumer recycled polyester Nonmetallic dyestuffs	Flammability	EN 1021 - 1 (cigarette) EN 1021 - 2 (match) BS 7176 Low Hazard Note: Flammability performance is dependent on components used. Our certificates show what substrates have been used in our tests. For composite tests customers must ensure their complete furniture meets the necessary standards.
Abrasion resistance	Heavy duty / 10 year guarantee Independently certified to ≥100.000 Martindale cycles		
Weight	497g/m ² ±5% (696g/lin.m ±5%)		

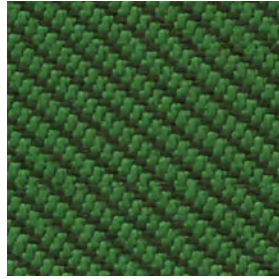
Textiles Oceanic



Flotsam
OOC01



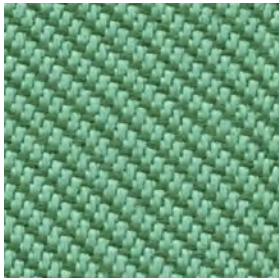
Jetsam
OOC02



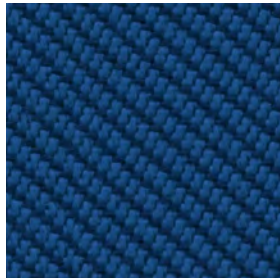
Coast
OOC03



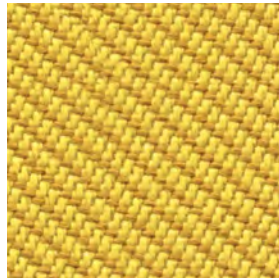
Sea
OOC04



Coral
OOC05



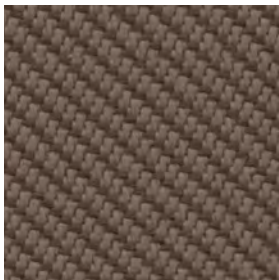
Atoll
OOC06



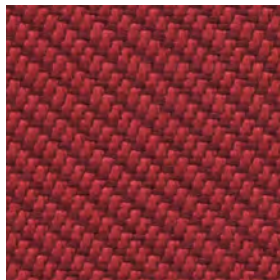
Barrier
OOC07



Bay
OOC08



Shore
OOC09



Abyss
OOC10



Neptune
OOC11



Aquatic
OOC12



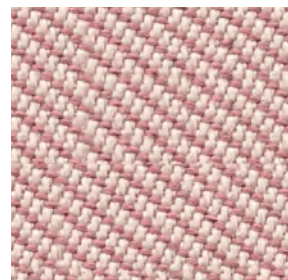
Paddle
OOC13



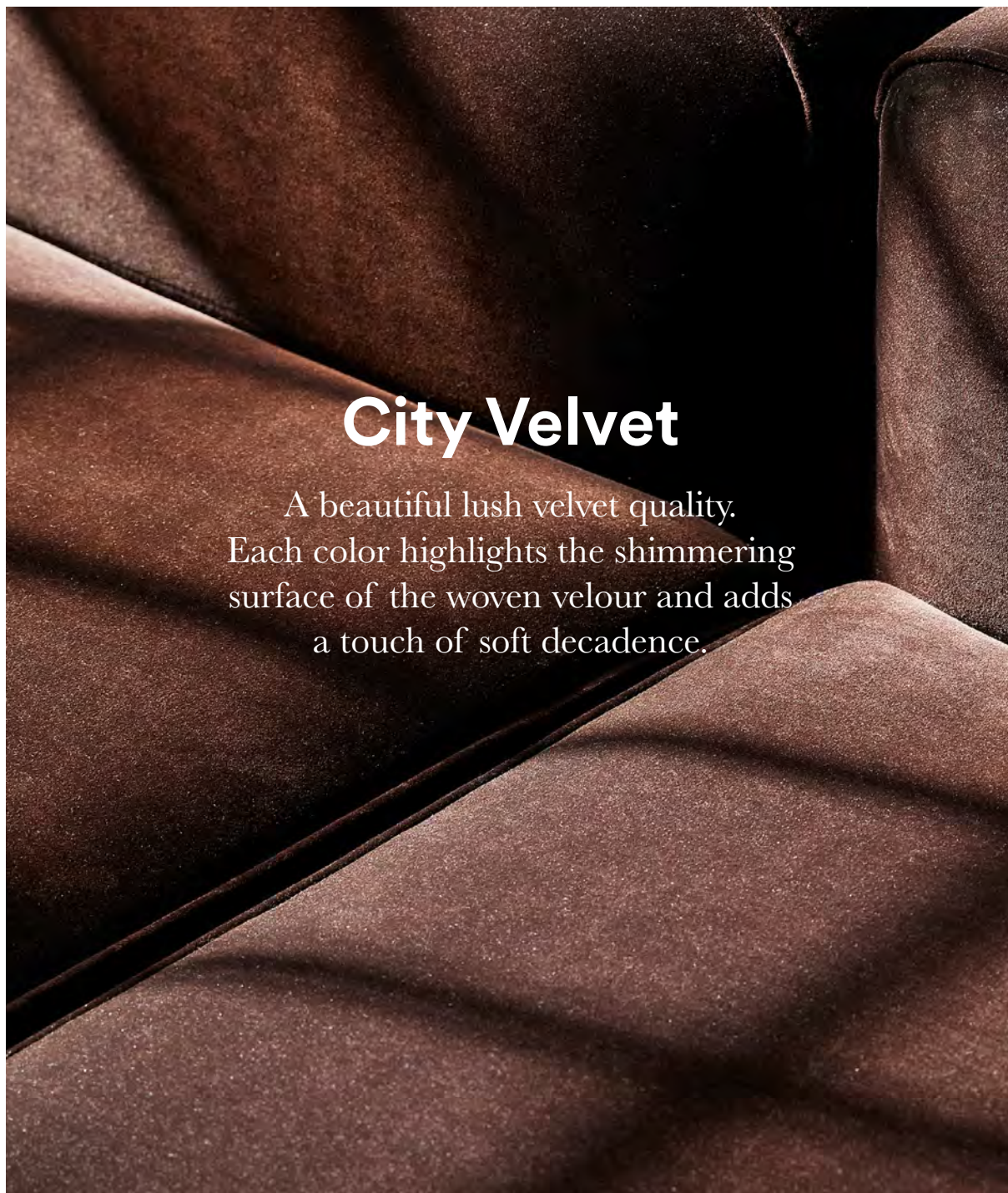
Riptide
OOC14



Gulf
OOC15



Seafarer
OOC16



City Velvet

A beautiful lush velvet quality.
Each color highlights the shimmering
surface of the woven velour and adds
a touch of soft decadence.

Manufacturer	JAB
Composition	Pile: 100% polyester Groundmaterial: 100% polyester
Abrasion resistance	100.000 Martindale
Weight	440 g/m ²
Light Fastness	3-5

Textiles City Velvet



CA7832/010



CA7832/011



CA7832/012



CA7832/013



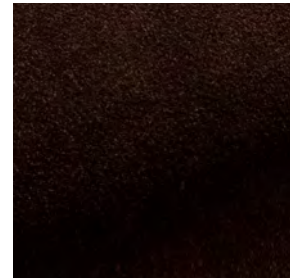
CA7832/014



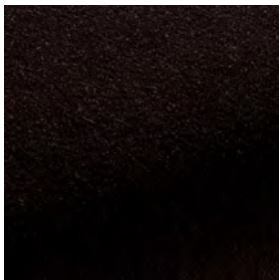
CA7832/015



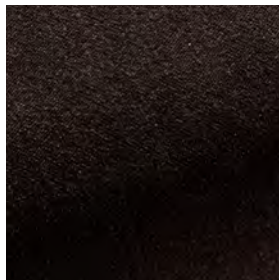
CA7832/020



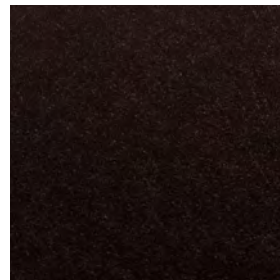
CA7832/021



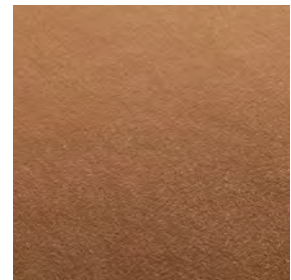
CA7832/022



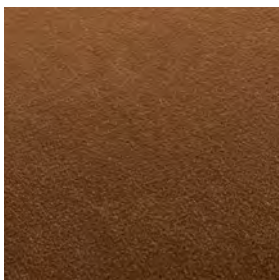
CA7832/023



CA7832/024



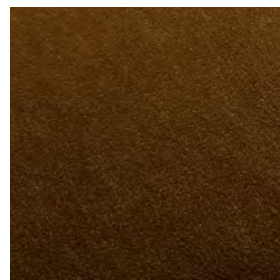
CA7832/025



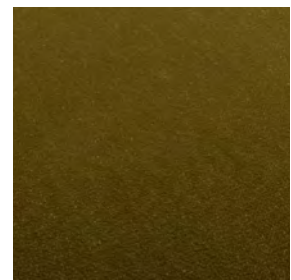
CA7832/026



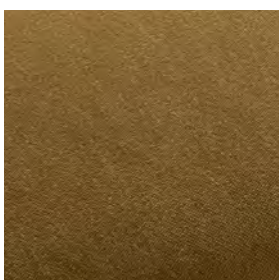
CA7832/027



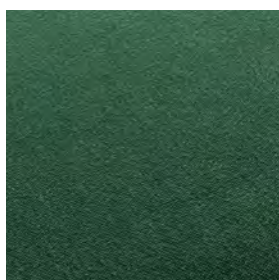
CA7832/030



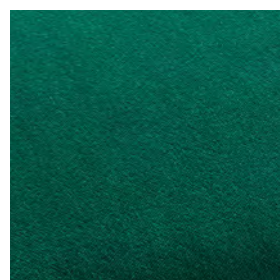
CA7832/031



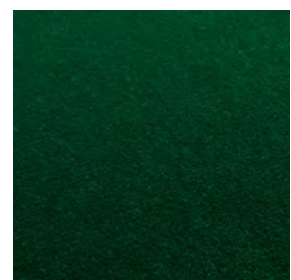
CA7832/032



CA7832/033



CA7832/034



CA7832/035

Textiles City Velvet



CA7832/036



CA7832/037



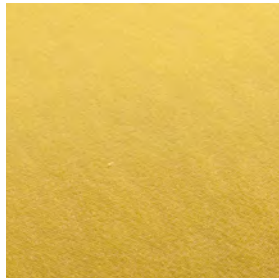
CA7832/038



CA7832/039



CA7832/040



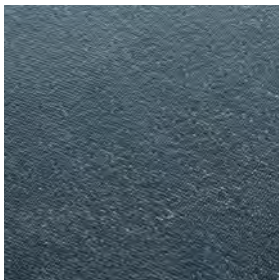
CA7832/041



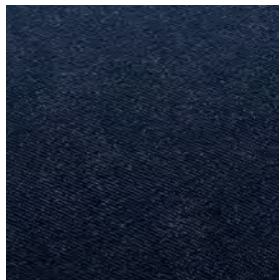
CA7832/042



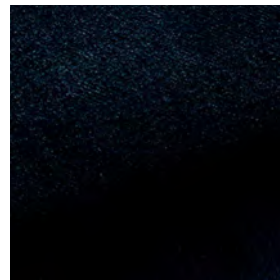
CA7832/043



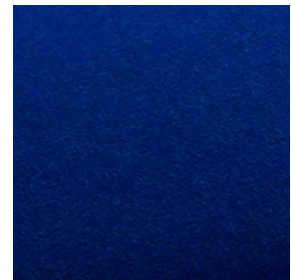
CA7832/050



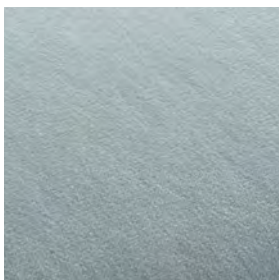
CA7832/051



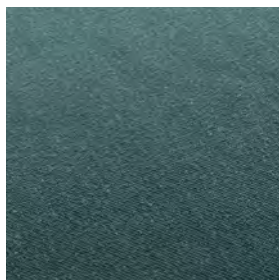
CA7832/052



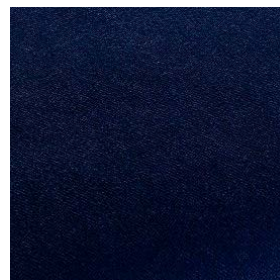
CA7832/053



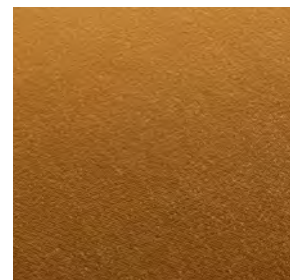
CA7832/055



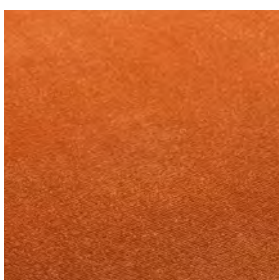
CA7832/056



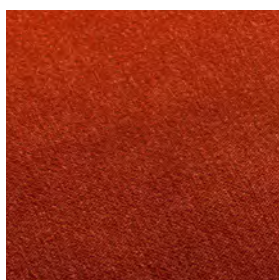
CA7832/058



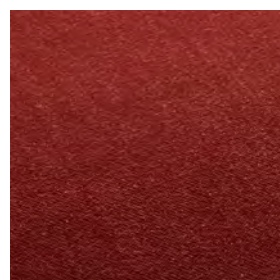
CA7832/060



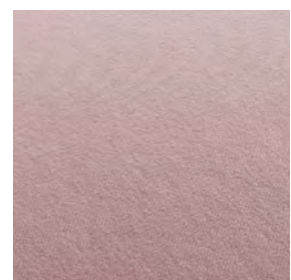
CA7832/061



CA7832/062



CA7832/063



CA7832/064

Textiles City Velvet



CA7832/065



CA7832/066



CA7832/067



CA7832/068



CA7832/069



CA7832/070



CA7832/071



CA7832/072



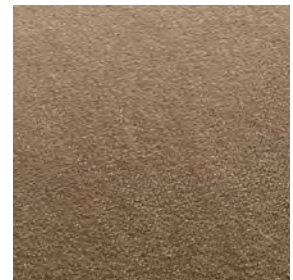
CA7832/073



CA7832/074



CA7832/075



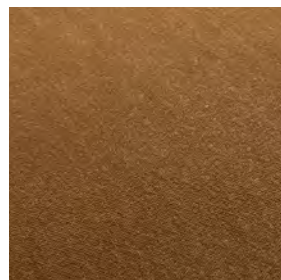
CA7832/076



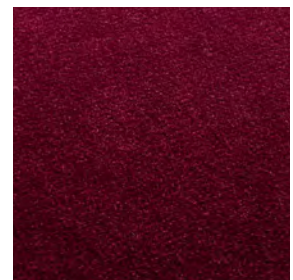
CA7832/077



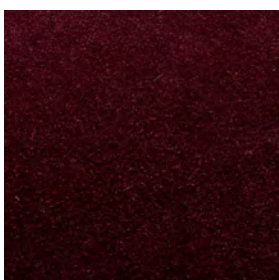
CA7832/078



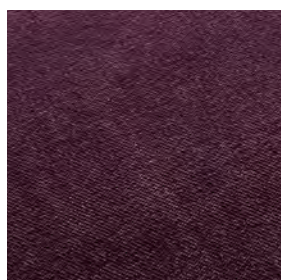
CA7832/079



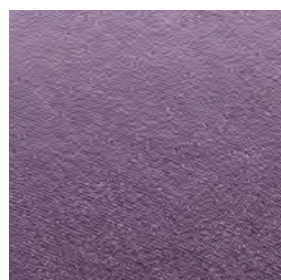
CA7832/080



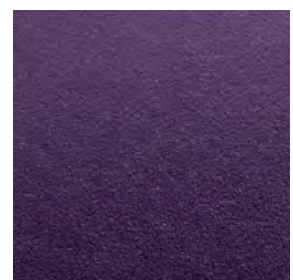
CA7832/081



CA7832/082



CA7832/083



CA7832/084

Textiles City Velvet



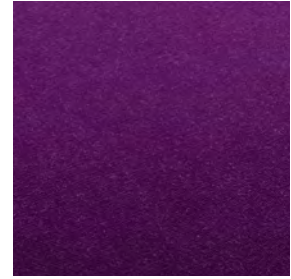
CA7832/085



CA7832/086



CA7832/087



CA7832/088



CA7832/089



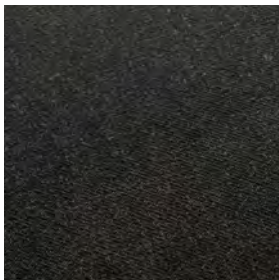
CA7832/090



CA7832/091



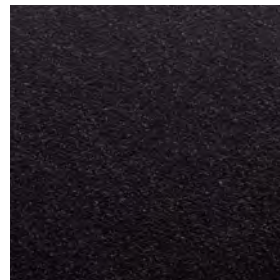
CA7832/092



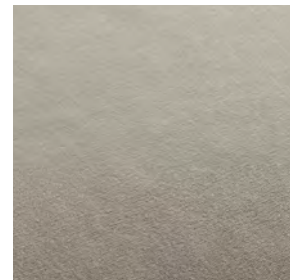
CA7832/093



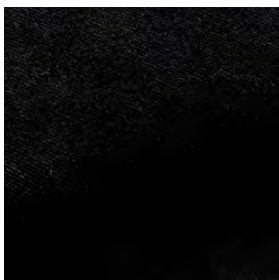
CA7832/094



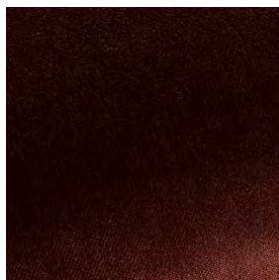
CA7832/095



CA7832/096



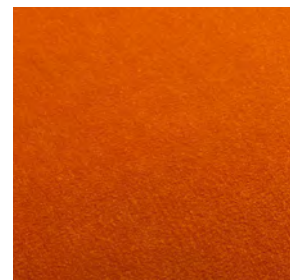
CA7832/099



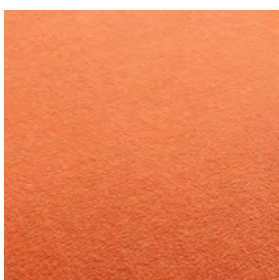
CA7832/126



CA7832/130



CA7832/160



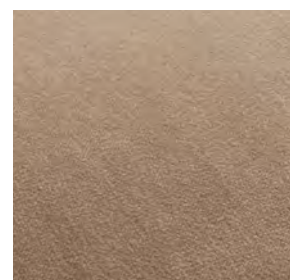
CA7832/161



CA7832/162



CA7832/165

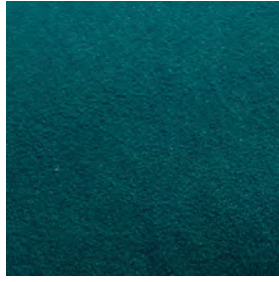


CA7832/170

Textiles City Velvet



CA7832/180



CA7832/181



CA7832/184



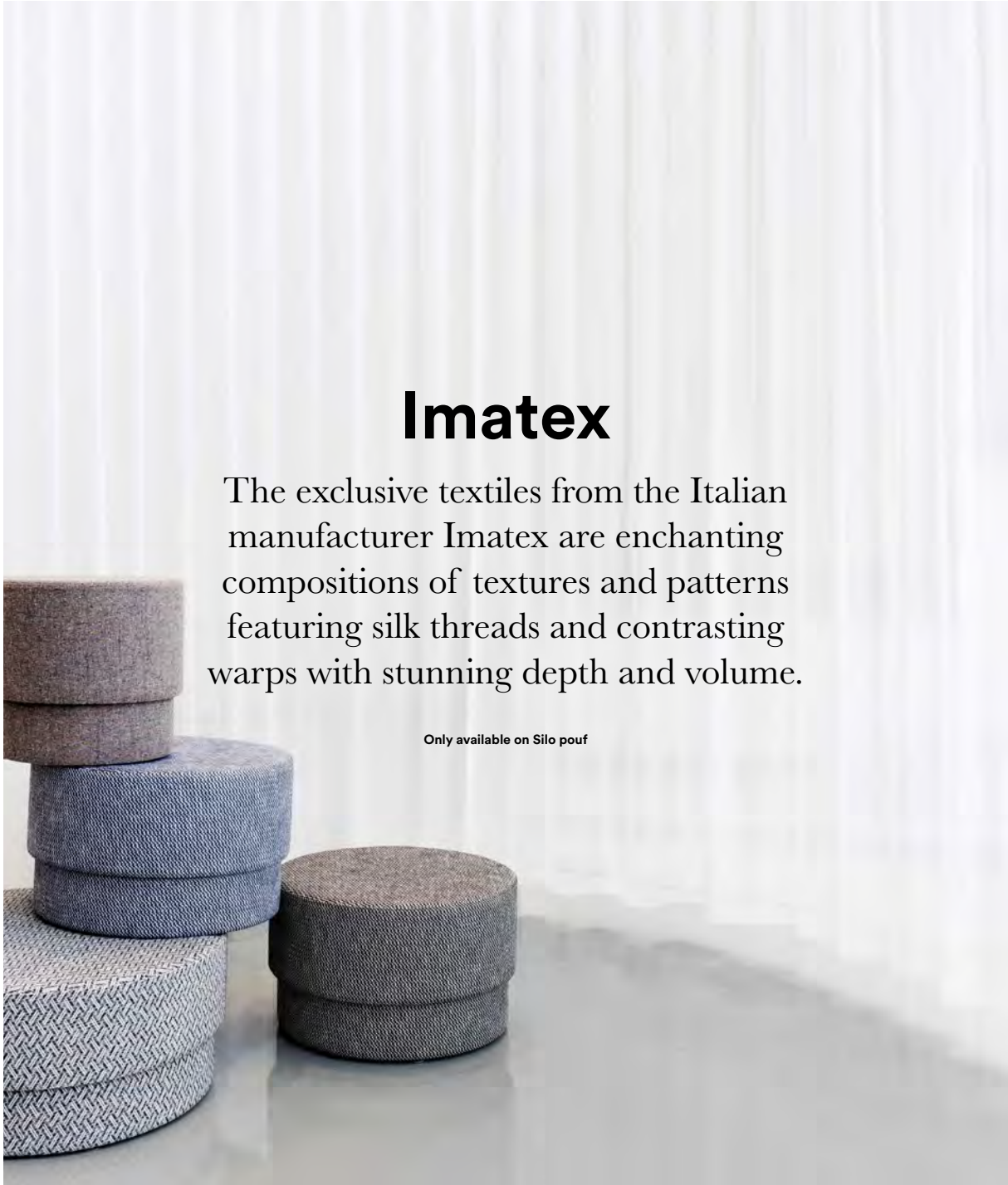
CA7832/186



CA7832/234



CA7832/263



Imatex

The exclusive textiles from the Italian manufacturer Imatex are enchanting compositions of textures and patterns featuring silk threads and contrasting warps with stunning depth and volume.

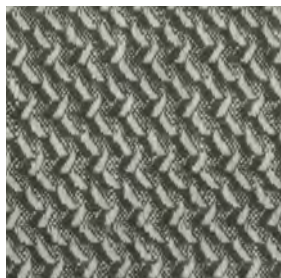
Only available on Silo pouf

Manufacturer	Imatex	Abrasion resistance	Albagia: 30.000 martindale Bolgheri: 30.000 martindale Wynwood/Z: 25.000 martindale
Composition	Albagia: 75% cotton, 17% viscose, 8% linnen Bolgheri: 35% viscose, 26% wool, 17% polyamide, 15% silk, 7% linnen Wynwood/Z: 36% acylic, 27% viscose, 11% polyester, 9% cotton, 8% linnen, 6% wool, 2% alpaca, 1% silk	Color fastness to rubbing	Wet:4, Dry:4/5
Weight	Albagia: 540/550 g/m2 Bolgheri: 960/970 g/m2 Wynwood/Z: 750/760 g/m2	Color fastness to light	5
		Pilling	3/4
		Flammability	Bolgheri: BS 5852 Source 0: PASS BS 5852 Source 1: PASS CAL 117: PASS

Textiles Imatex



Albagia 15/330
201



Albagia 15/330
214



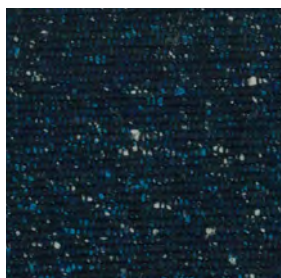
Albagia 15/330
288



Bolgheri 96/5461
LAN7



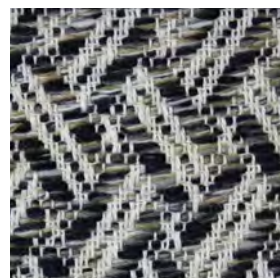
Bolgheri 96/5461
LNE4



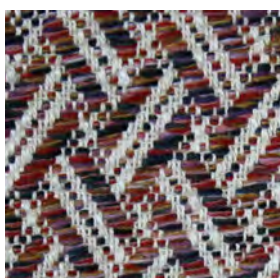
Bolgheri 96/5461
LNE8



Wynwood/Z 96Z/5743
8



Wynwood/Z 96Z/5743
10



Wynwood/Z 96Z/5743
13

Canvas 2

Canvas is a vibrant woollen upholstery textile created by Giulio Ridolfo.



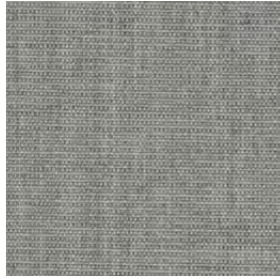
Category: Kvadrat upholstery
Pattern: Solid
Composition: 90% new wool worsted 10% nylon
Width: Approx. 140 cm (Approx. 55")
Weight: 480 g/lin. m (15.48 oz/ly)
Repeat: Approx. 0/0 cm (Approx. 0"/0")
Durability: 100,000 Martindale
Pilling: 4 (ISO 1-5)
Lightfastness: 5-6

Fire Tests: AS/NZS 1530.3 • BS 5852 crib 5 with treatment • BS 5852 part 1 • IMO FTP Code 2010 Part 8 • NF D 60 013 • NFPA 260 • SN 198 898 5.3 with treatment • UNI 9175 1IM • US Cal. Bull. 117-2013 • EN 1021-1/2 • ÖNORM B1/Q1 • ASTM E84 Class A Adhered • ASTM E84 Class A Unadhered
Fastness to rubbing: 4-5 (Dry) 4-5 (Wet)
Airflow: 849 Pa s/m
Absorption: 0.60/Class C (Absorption flat)
0.80/Class B (Absorption folded)
Seam Slippage: 3.5 mm (warp), 2 mm (weft)

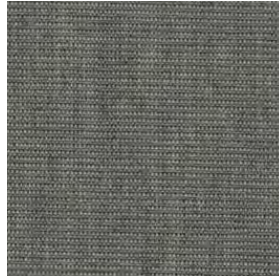
Textiles Canvas 2



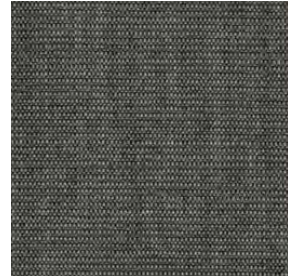
Canvas 2
0114



Canvas 2
0124



Canvas 2
0134



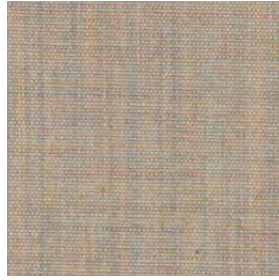
Canvas 2
0154



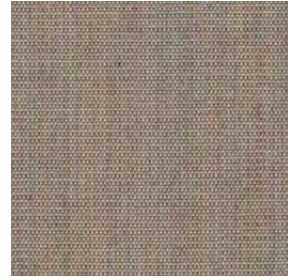
Canvas 2
0174



Canvas 2
0216



Canvas 2
0224



Canvas 2
0244



Canvas 2
0254



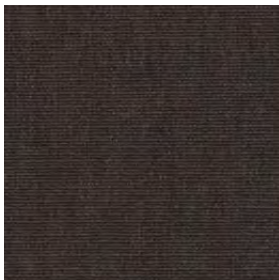
Canvas 2
0264



Canvas 2
0356



Canvas 2
0364



Canvas 2
0374



Canvas 2
0414



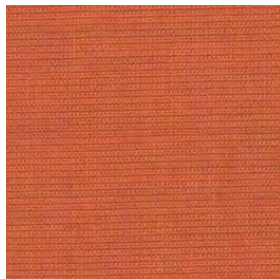
Canvas 2
0424



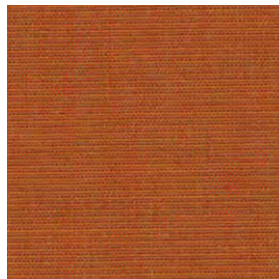
Canvas 2
0446



Canvas 2
0454



Canvas 2
0546

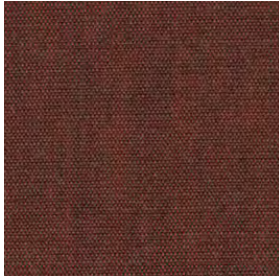


Canvas 2
0556

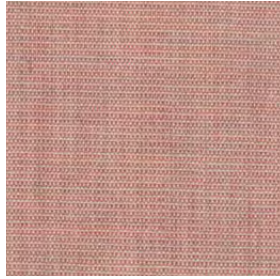


Canvas 2
0566

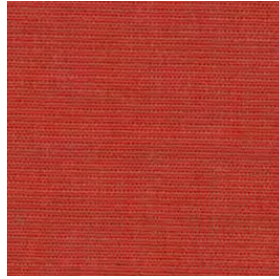
Textiles Canvas 2



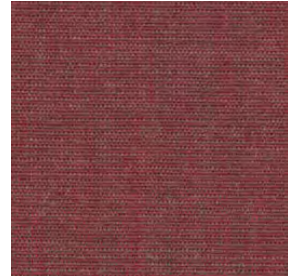
Canvas 2
0576



Canvas 2
0614



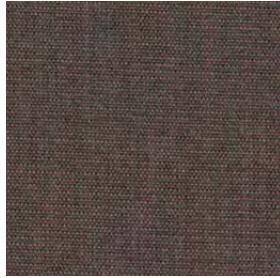
Canvas 2
0644



Canvas 2
0654



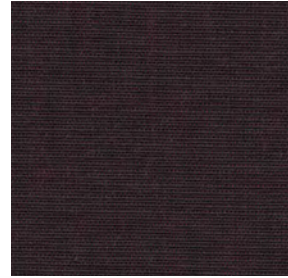
Canvas 2
0666



Canvas 2
0674



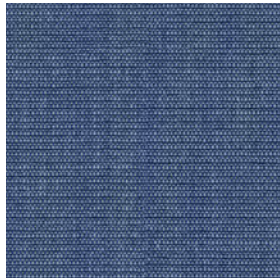
Canvas 2
0684



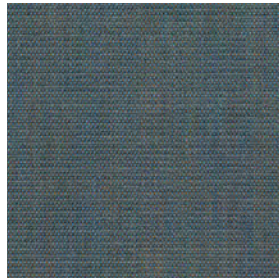
Canvas 2
0694



Canvas 2
0716



Canvas 2
0726



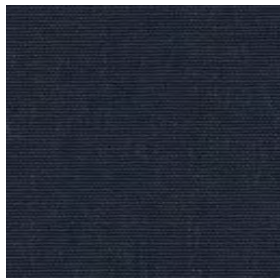
Canvas 2
0734



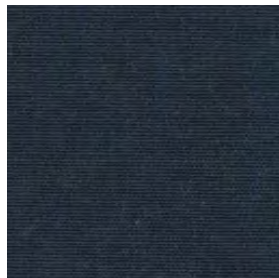
Canvas 2
0746



Canvas 2
0764



Canvas 2
0786



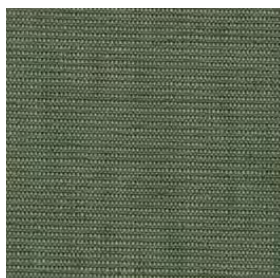
Canvas 2
0794



Canvas 2
0836



Canvas 2
0854



Canvas 2
0926

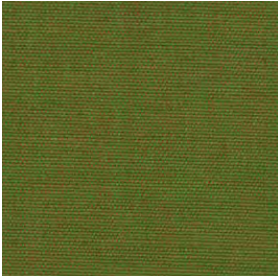


Canvas 2
0936



Canvas 2
0946

Textiles Canvas 2



Canvas 2
0954



Canvas 2
0964



Canvas 2
0974



Canvas 2
0984



Canvas 2
0996

Divina MD

Divina MD is an upholstery textile designed by Finn Sködt. Available in sophisticated, rich colours, which reveal hidden depths as the perspective of the viewer changes, it makes a strong colour statement.

Category:	Kvadrat upholstery	Fire Tests:	AS/NZS 1530.3 • BS 5852 Crib 5 • BS 5852 part 1 • BS 5867 part 2 type B • IMO FTP Code 2010 Part 8 • NF D 60 013 • NFPA 260 • SN 198 898 5.3 with treatment • UNI 9175 1IM • US Cal. Bull. 117-2013 • EN 1021-1/2 • EN 13501, C-s1, d0, glued • NFPA 701 with treatment • ASTM E84 Class B Unadhered • ASTM E84 Class A Adhered • ÖNORM B1/Q1 • GB 50222 B1 with treatment (Chinese) (Chinese)
Pattern:	Solid	Fastness to rubbing:	4-5 (Dry) 4-5 (Wet)
Composition:	100% new wool	Airflow:	678 Pa s/m
Width:	Approx. 150 cm (Approx. 59")	Absorption:	0.60/Class C (Absorption flat) 0.70/Class C (Absorption folded)
Weight:	840 g/lin. m (27.09 oz/ly)	Seam Slippage:	2 mm (warp), 2 mm (weft)
Repeat:	Approx. 0/0 cm (Approx. 0"/0")		
Durability:	45,000 Martindale		
Pilling:	3 (ISO 1-5)		
Lightfastness:	5-6 (ISO 1-8)		

Textiles Divina MD



Divina MD
0193



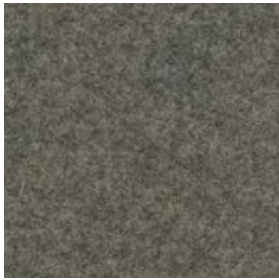
Divina MD
0203



Divina MD
0213



Divina MD
0293



Divina MD
0343



Divina MD
0353



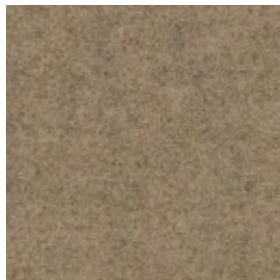
Divina MD
0363



Divina MD
0413



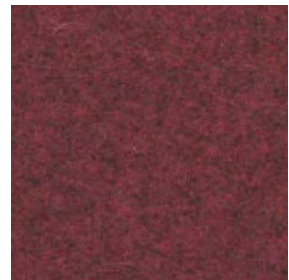
Divina MD
0433



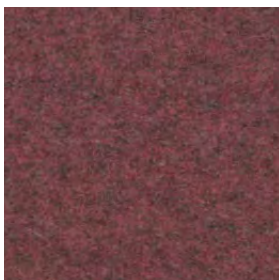
Divina MD
0453



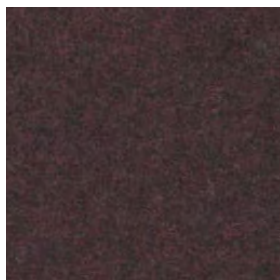
Divina MD
0613



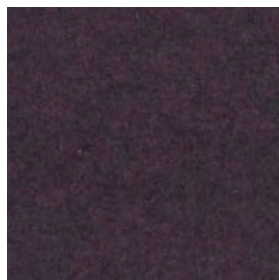
Divina MD
0633



Divina MD
0653



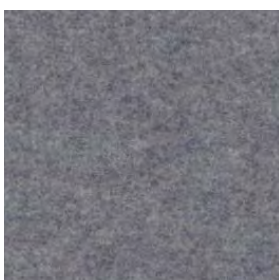
Divina MD
0673



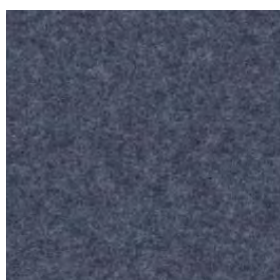
Divina MD
0683



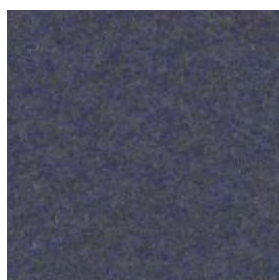
Divina MD
0713



Divina MD
0733



Divina MD
0743



Divina MD
0753



Divina MD
0773

Textiles Divina MD



Divina MD
0783



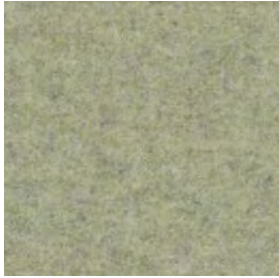
Divina MD
0813



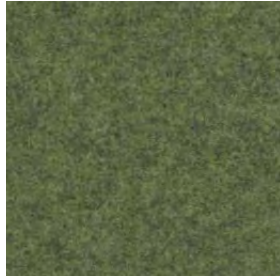
Divina MD
0843



Divina MD
0873



Divina MD
0913



Divina MD
0943



Divina MD
0973



Divina Melange 3

Divina Melange 3 is a vibrant piece-dyed woollen upholstery textile reminiscent of felt. Cheerfully simple, it comes in a fresh, versatile palette by artist and designer Finn Sködt.

Category: Kvadrat upholstery

Pattern: Solid

Composition: 100% new wool

Width: Approx. 150 cm (Approx. 59")

Weight: 840 g/lin. m (27.09 oz/ly)

Repeat: Approx. 0/0 cm (Approx. 0"/0")

Durability: 45,000 Martindale

Pilling: 3 (ISO 1-5)

Lightfastness: 6-7

Fire Tests: AS/NZS 1530.3 • BS 5852 Crib 5 • BS 5852 part 1 • BS 5867 part 2 type B • IMO FTP Code 2010 Part 8 • NF D 60 013 • NFPA 260 • SN 198 898 5.3 with treatment • UNI 9175 1IM • US Cal. Bull. 117-2013 • EN 1021-1/2 • EN 13501, C-s1, d0, glued • Chinese GB 50222B1 with treatment • ÖNORM B1/Q1 • NFPA 701 with treatment • ASTM E84 Class B Unadhered • ASTM E84 Class A Adhered

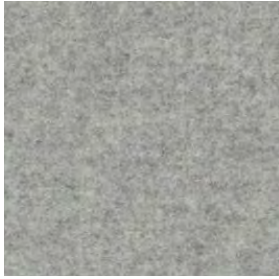
Fastness to rubbing: 5 (Dry) 3-4 (Wet)

Airflow: 678 Pa s/m

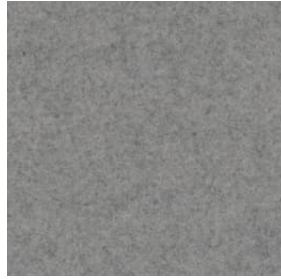
Absorption: 0.60/Class C (Absorption flat)
0.70/Class C (Absorption folded)

Seam Slippage: 2 mm (warp), 2 mm (weft)

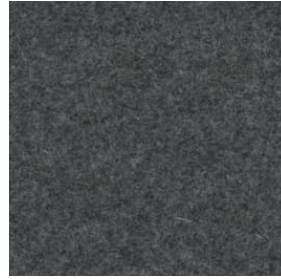
Textiles Divina Melange 3



Divina Melange 3
0120



Divina Melange 3
0147



Divina Melange 3
0170



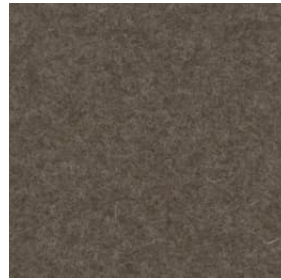
Divina Melange 3
0180



Divina Melange 3
0227



Divina Melange 3
0237



Divina Melange 3
0260



Divina Melange 3
0277



Divina Melange 3
0280



Divina Melange 3
0367



Divina Melange 3
0427



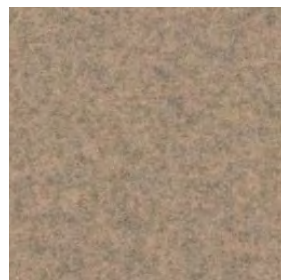
Divina Melange 3
0457



Divina Melange 3
0467



Divina Melange 3
0471



Divina Melange 3
0517



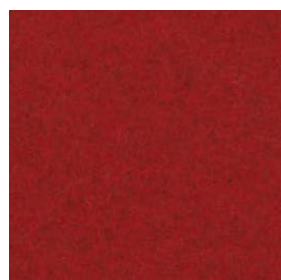
Divina Melange 3
0527



Divina Melange 3
0547



Divina Melange 3
0557



Divina Melange 3
0567



Divina Melange 3
0571

Textiles Divina Melange 3



Divina Melange 3
0581



Divina Melange 3
0597



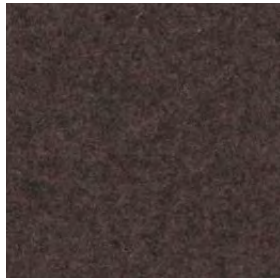
Divina Melange 3
0617



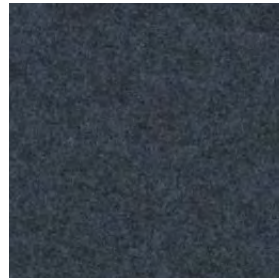
Divina Melange 3
0620



Divina Melange 3
0647



Divina Melange 3
0677



Divina Melange 3
0687



Divina Melange 3
0731



Divina Melange 3
0747



Divina Melange 3
0757



Divina Melange 3
0777



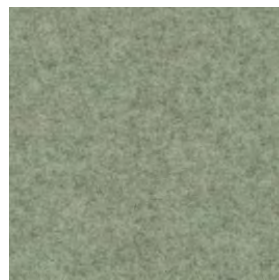
Divina Melange 3
0787



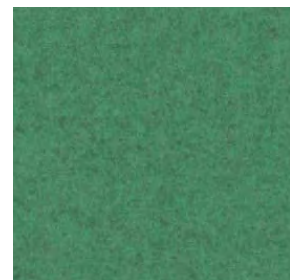
Divina Melange 3
0821



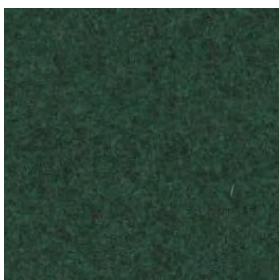
Divina Melange 3
0871



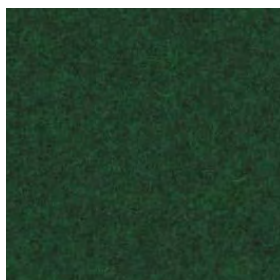
Divina Melange 3
0917



Divina Melange 3
0937



Divina Melange 3
0967



Divina Melange 3
0977

Divina 3

Divina is a full-cloth product, which means that it is manufactured by weaving the yarn in a coarse linen hose casing, after which, it is subjected to mechanical processing using very high temperatures, at the same time as it is being coloured. This creates a situation where the surface becomes smooth, directionless and uniform in a manner very similar to the properties of felt.

Category: Kvadrat upholstery

Pattern: Solid

Composition: 100% new wool

Width: Approx. 150 cm (Approx. 59")

Weight: 840 g/lin. m (27.09 oz/ly)

Repeat: Approx. 0/0 cm (Approx. 0"/0")

Durability: 45,000 Martindale

Pilling: 3 (ISO 1-5)

Lightfastness: 5-6

Fire Tests: AS/NZS 1530.3 • BS 5852 Crib 5 • BS 5852 part 1 • BS 5867 part 2 type B • IMO FTP Code 2010 Part 8 • NF D 60 013 • NFPA 260 • SN 198 898 5.3 with treatment • UNI 9175 1IM • US Cal. Bull. 117-2013 • EN 1021-1/2 • EN 13501, C-s1, d0, glued • NFPA 701 with treatment • ASTM E84 Class B Unadhered • ASTM E84 Class A Adhered • ÖNORM B1/Q1 • GB 50222 B1 with treatment (Chinese)

Fastness to rubbing: 4-5 (Dry) 4-5 (Wet)

Airflow: 678 Pa s/m

Absorption: 0.60/Class C (Absorption flat)
0.70/Class C (Absorption folded)

Seam Slippage: 2 mm (warp), 2 mm (weft)

Textiles Divina 3



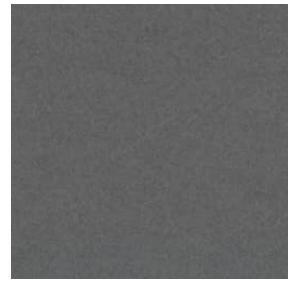
Divina 3
0120



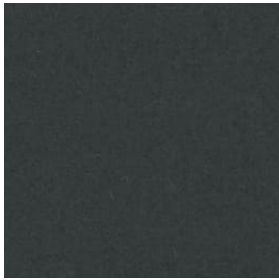
Divina 3
0154



Divina 3
0171



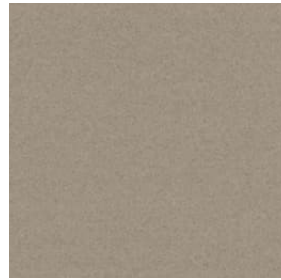
Divina 3
0173



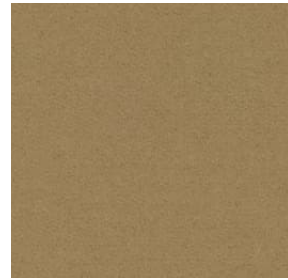
Divina 3
0181



Divina 3
0191



Divina 3
0224



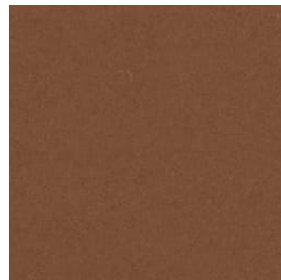
Divina 3
0236



Divina 3
0246



Divina 3
0334



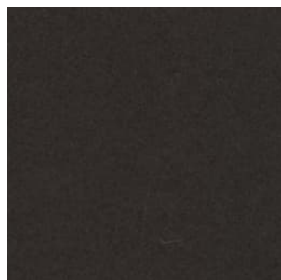
Divina 3
0346



Divina 3
0356



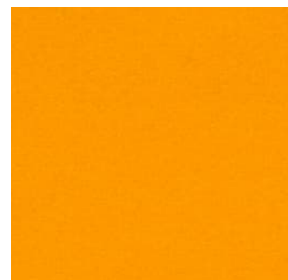
Divina 3
0376



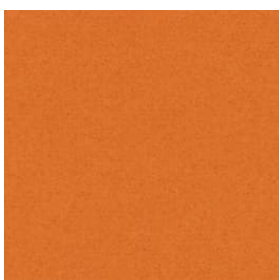
Divina 3
0384



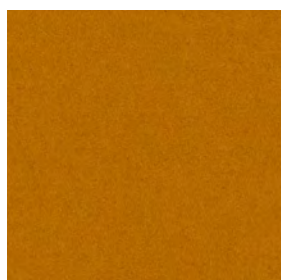
Divina 3
0393



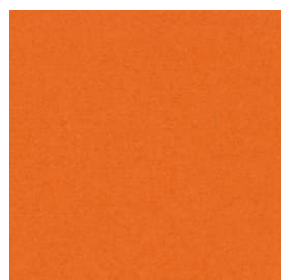
Divina 3
0426



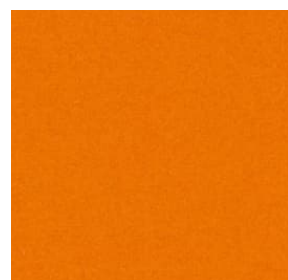
Divina 3
0444



Divina 3
0462



Divina 3
0526

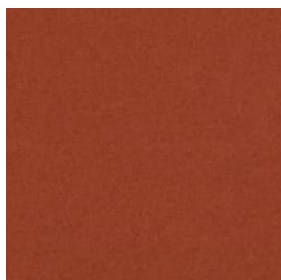


Divina 3
0536

Textiles Divina 3



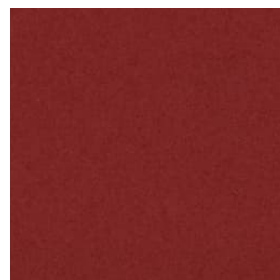
Divina 3
0542



Divina 3
0552



Divina 3
0562



Divina 3
0584



Divina 3
0623



Divina 3
0626



Divina 3
0636



Divina 3
0652



Divina 3
0662



Divina 3
0666



Divina 3
0671



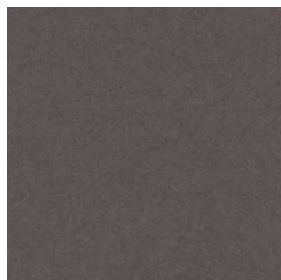
Divina 3
0676



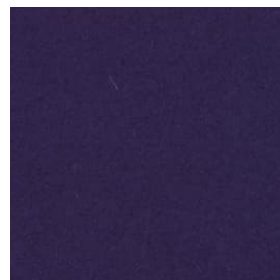
Divina 3
0684



Divina 3
0686



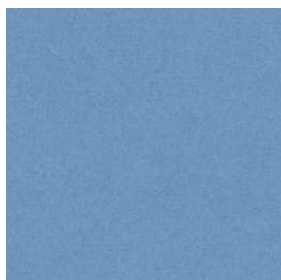
Divina 3
0691



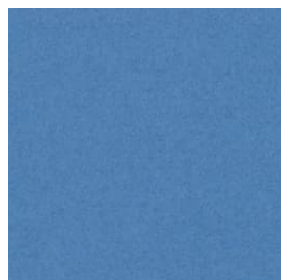
Divina 3
0692



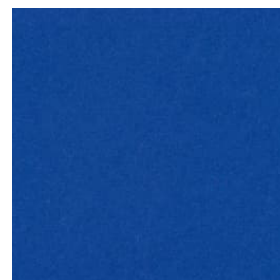
Divina 3
0696



Divina 3
0712

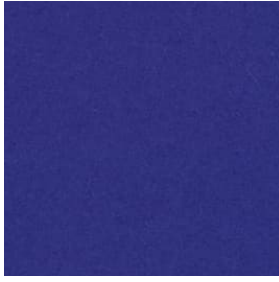


Divina 3
0742

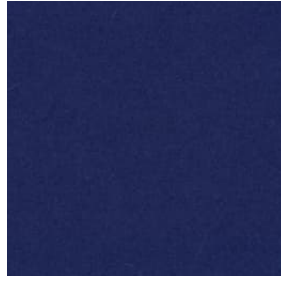


Divina 3
0756

Textiles Divina 3



Divina 3
0782



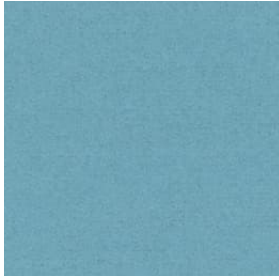
Divina 3
0791



Divina 3
0793



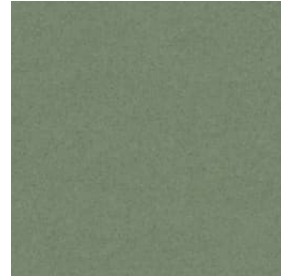
Divina 3
0826



Divina 3
0836



Divina 3
0846



Divina 3
0856



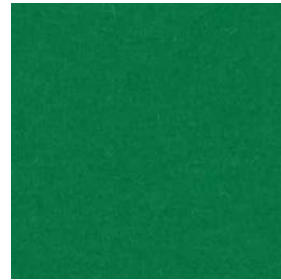
Divina 3
0876



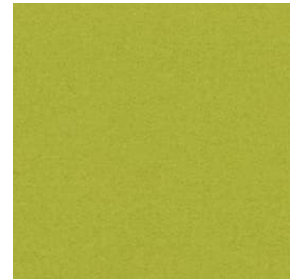
Divina 3
0886



Divina 3
0893



Divina 3
0922



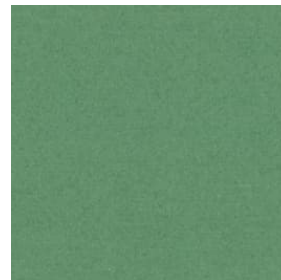
Divina 3
0936



Divina 3
0944



Divina 3
0956



Divina 3
0966



Divina 3
0984

Fiord 2

The construction of Fiord combines a mélange yarn with a unicoloured yarn that creates pearl-like dots that play across the textile's surface. This sophisticated expression reflects a key source of inspiration behind the design: moonlight glittering like pearls on the rippling waters of a Norwegian fjord.



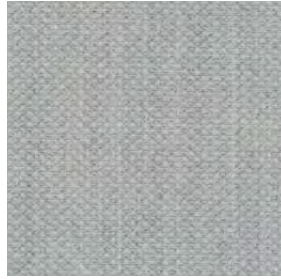
Category:	Kvadrat upholstery
Pattern:	Solid
Composition:	92% new wool worsted 8% nylon
Width:	Approx. 140 cm (Approx. 55")
Weight:	500 g/lin. m (16.13 oz/ly)
Repeat:	Approx. 0/0 cm (Approx. 0"/0")
Durability:	60,000 Martindale
Pilling:	4-5 (ISO 1-5)
Lightfastness:	6

Fire Tests:	BS 5852 crib 5 with treatment • BS 5852 part 1 • IMO FTP Code 2010 Part 8 • NF D 60 013 • NFPA 260 • SN 198 898 5.3 with treatment • UNI 9175 11M • US Cal. Bull. 117-2013 • EN 1021-1/2 • ASTM E84 Class A Adhered • ASTM E84 Class A Unadhered • AS/NZS 3837 class 2 • GB 50222 B1 with treatment (Chinese) • ÖNORM B1/Q1
Fastness to rubbing:	4-5 (Dry) 4-5 (Wet)
Airflow:	484 Pa s/m
Seam Slippage:	4.5 mm (warp), 5 mm (weft)

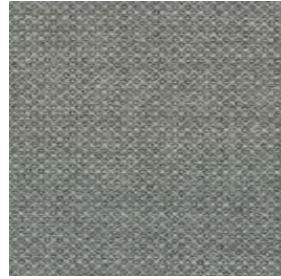
Textiles Fiord 2



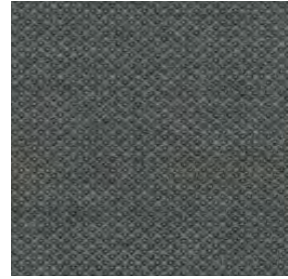
Fiord 2
0101



Fiord 2
0121



Fiord 2
0151



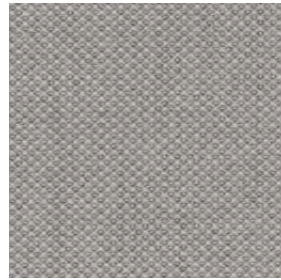
Fiord 2
0171



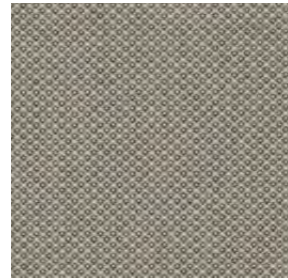
Fiord 2
0191



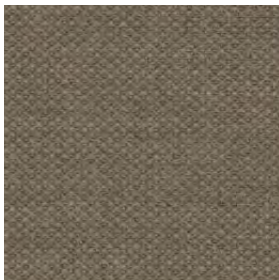
Fiord 2
0201



Fiord 2
0251



Fiord 2
0262



Fiord 2
0271



Fiord 2
0322



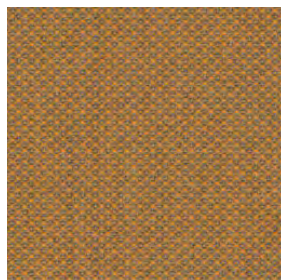
Fiord 2
0351



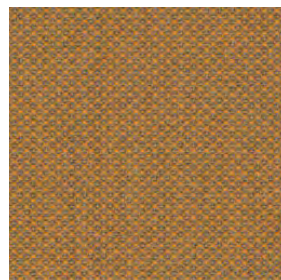
Fiord 2
0371



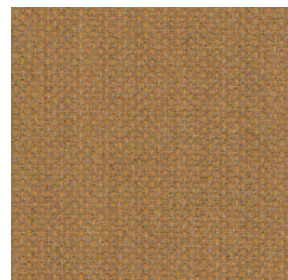
Fiord 2
0391



Fiord 2
0422



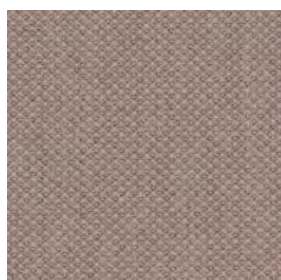
Fiord 2
0442



Fiord 2
0451



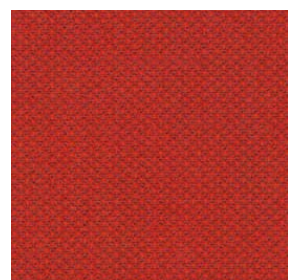
Fiord 2
0521



Fiord 2
0551

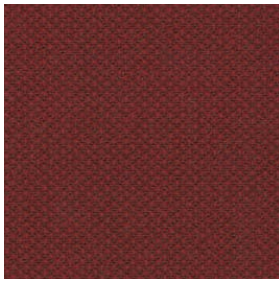


Fiord 2
0562



Fiord 2
0571

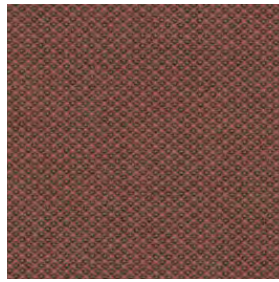
Textiles Divina 3



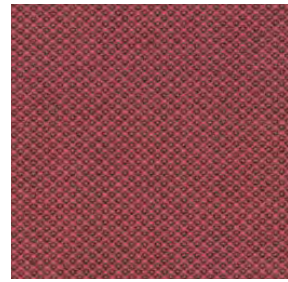
Fiord 2
0581



Fiord 2
0591



Fiord 2
0642



Fiord 2
0662



Fiord 2
0751



Fiord 2
0771



Fiord 2
0782



Fiord 2
0791



Fiord 2
0821



Fiord 2
0791



Fiord 2
0821



Fiord 2
0862



Fiord 2
0951



Fiord 2
0961



Fiord 2
0971



Fiord 2
0981



Fiord 2
0991

Hallingdal 65

Kvadrat's first textile 'Hallingdal' has become the archetype of woollen textiles. The very durable upholstery fabric was originally designed in 1965 by Nanna Ditzel, and is now available in a version with an updated colour scale: Hallingdal 65.

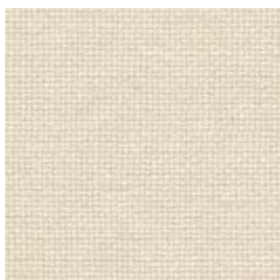
Hallingdal 65 is made of wool and viscose, which complement each other well: the wool provides excellent durability and flexibility, whilst the viscose adds brilliance and depth to the colour. Both materials are dyed before they are spun, which highlights the rich texture of the fabric.



Category:	Kvadrat upholstery
Pattern:	Solid
Composition:	70% new wool 30% viscose
Width:	Approx. 130 cm (Approx. 51")
Weight:	795 g/lin. m (25.64 oz/ly)
Repeat:	Approx. 0/0 cm (Approx. 0"/0")
Durability:	100,000 Martindale
Pilling:	3-4 (ISO 1-5)
Lightfastness:	7

Fire Tests:	AS/NZS 1530.3 • BS 5852 Crib 5 • BS 5852 part 1 • IMO FTP Code 2010 Part 8 • NF D 60 013 • NFPA 260 • UNI 9175 1IM • US Cal. Bull. 117-2013 • EN 1021-1/2 • ASTM E84 Class A Adhered • SN 198 898 5.3 with treatment • ÖNORM B1/Q1 • GB 50222 B1 with treatment (Chinese) • AS/NZS 3837 class 2 • ASTM E84 Class B Unadhered
Fastness to rubbing:	4-5 (Dry) 3-4 (Wet)
Airflow:	182 Pa s/m
Absorption:	0.45/Class D (Absorption flat) 0.70/Class C (Absorption folded)
Seam Slippage:	4.5 mm (warp), 4 mm (weft)

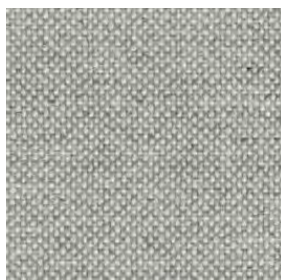
Textiles Hallingdal 65



Hallingdal 65
0100



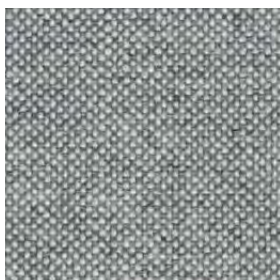
Hallingdal 65
0103



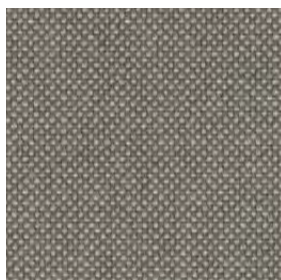
Hallingdal 65
0110



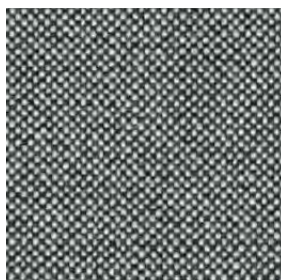
Hallingdal 65
0113



Hallingdal 65
0116



Hallingdal 65
0123



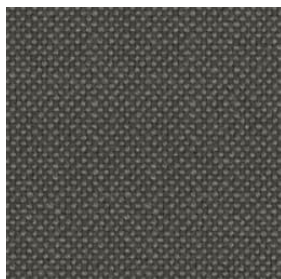
Hallingdal 65
0126



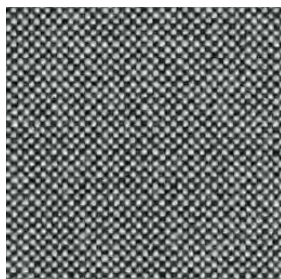
Hallingdal 65
0130



Hallingdal 65
0143



Hallingdal 65
0153



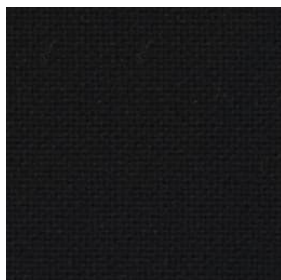
Hallingdal 65
0166



Hallingdal 65
0173



Hallingdal 65
0180



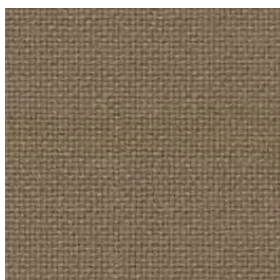
Hallingdal 65
0190



Hallingdal 65
0200



Hallingdal 65
0220



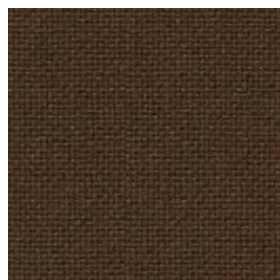
Hallingdal 65
0224



Hallingdal 65
0227

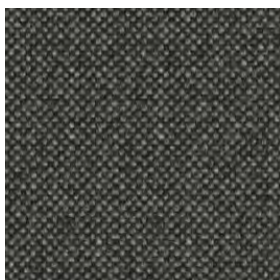


Hallingdal 65
0270

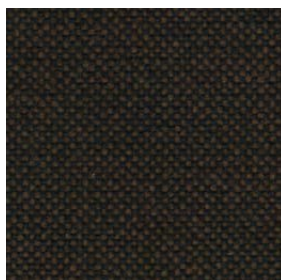


Hallingdal 65
0350

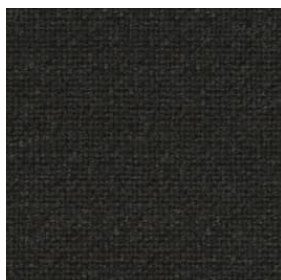
Textiles Hallingdal 65



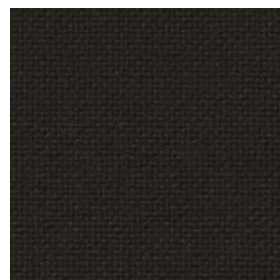
Hallingdal 65
0368



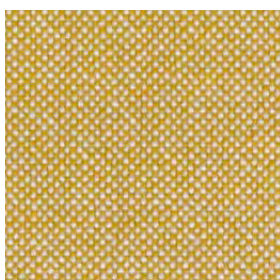
Hallingdal 65
0370



Hallingdal 65
0376



Hallingdal 65
0390



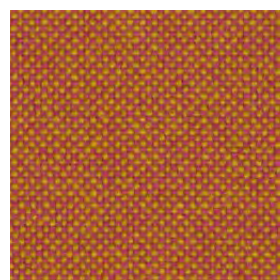
Hallingdal 65
0407



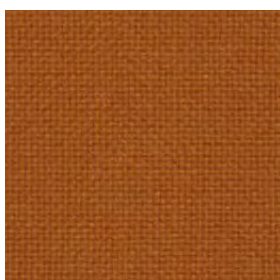
Hallingdal 65
0420



Hallingdal 65
0457



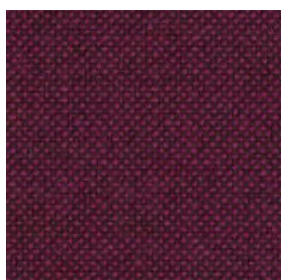
Hallingdal 65
0526



Hallingdal 65
0547



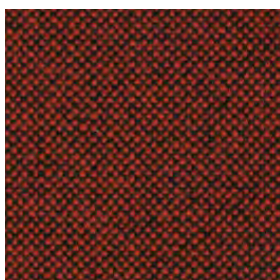
Hallingdal 65
0563



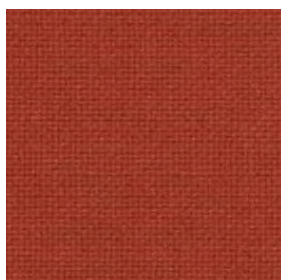
Hallingdal 65
0573



Hallingdal 65
0590



Hallingdal 65
0596



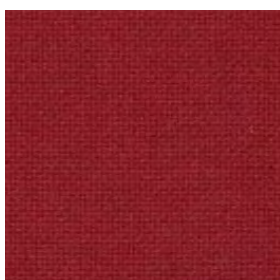
Hallingdal 65
0600



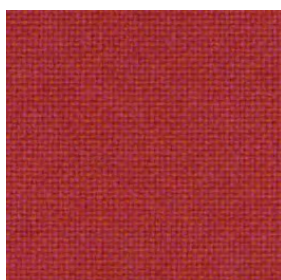
Hallingdal 65
0657



Hallingdal 65
0660



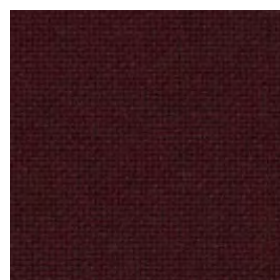
Hallingdal 65
0674



Hallingdal 65
0680



Hallingdal 65
0687

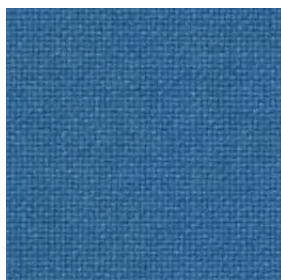


Hallingdal 65
0694

Textiles Hallingdal 65



Hallingdal 65
0702



Hallingdal 65
0723



Hallingdal 65
0733



Hallingdal 65
0750



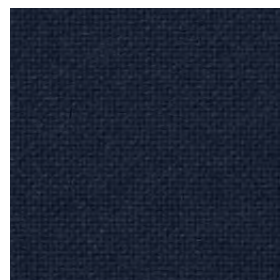
Hallingdal 65
0753



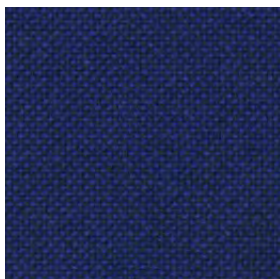
Hallingdal 65
0754



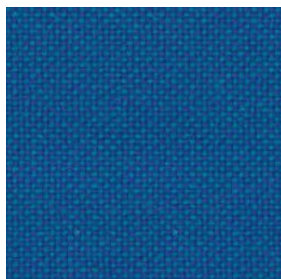
Hallingdal 65
0763



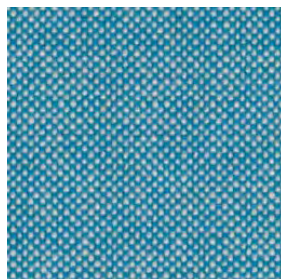
Hallingdal 65
0764



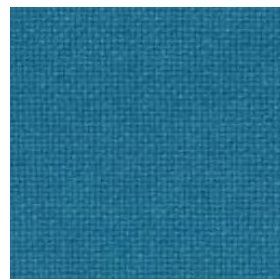
Hallingdal 65
0773



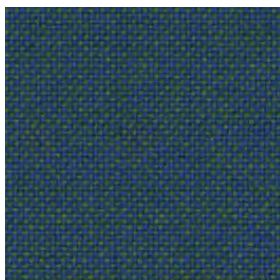
Hallingdal 65
0810



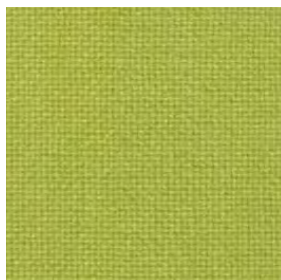
Hallingdal 65
0840



Hallingdal 65
0850



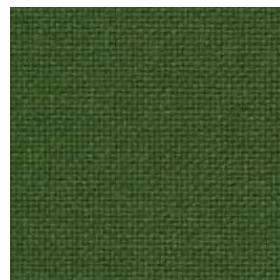
Hallingdal 65
0890



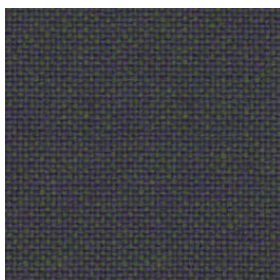
Hallingdal 65
0907



Hallingdal 65
0944



Hallingdal 65
0960



Hallingdal 65
0968



Hallingdal 65
0980

Remix 3

Remix 3 is an elegant upholstery textile distinguished by exceptional depth of colour, designed by Giulio Ridolfo.

Remix 3 looks unicoloured from a distance but reveals subtle details and colour contrasts when viewed close-up. The textile features a tight, minimalistic weave, and derives its lively colour play from a combination of two different mélange yarns, which each combine up to three hues.



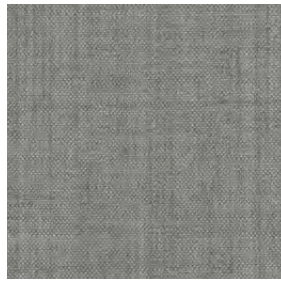
Category:	Kvadrat upholstery
Pattern:	Solid
Composition:	90% new wool worsted 10% nylon
Width:	Approx. 140 cm (Approx. 55")
Weight:	420 g/lin. m (13.55 oz/ly)
Repeat:	Approx. 0/0 cm (Approx. 0"/0")
Durability:	100,000 Martindale
Pilling:	4 (ISO 1-5)
Lightfastness:	6

Fire Tests:	AS/NZS 1530.3 • BS 5852 crib 5 with treatment • BS 5852 part 1 • IMO FTP Code 2010 Part 7 with treatment • IMO FTP Code 2010 Part 8 • NF D 60 013 • NFPA 260 • SN 198 898 5.3 with treatment • UNI 9175 1IM • US Cal. Bull. 117-2013 • EN 1021-1/2 • AS/NZS 3837 class 2 • ÖNORM B1/Q1 • ASTM E84 Class A Unadhered • ASTM E84 Class A Adhered • GB 50222 B1 with treatment (Chinese)
Fastness to rubbing:	4 (Dry) 4 (Wet)
Airflow:	465 Pa s/m
Absorption:	0.55/Class D (Absorption flat) 0.80/Class B (Absorption folded)
Seam Slippage:	5 mm (warp), 3 mm (weft)

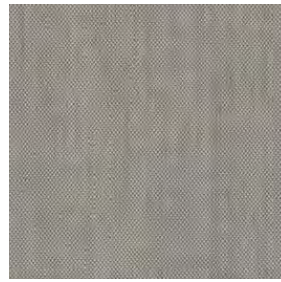
Textiles Remix 3



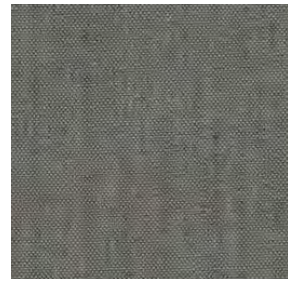
Remix 3
0113



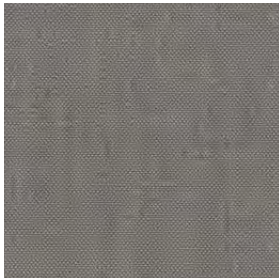
Remix 3
0123



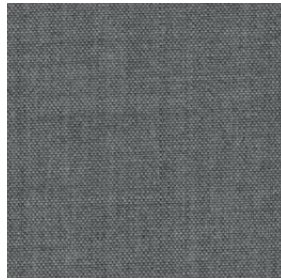
Remix 3
0126



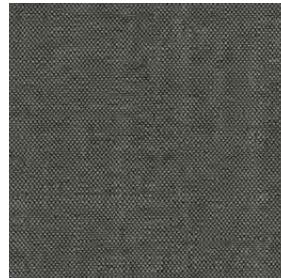
Remix 3
0133



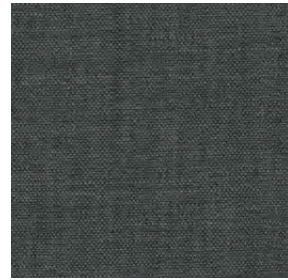
Remix 3
0136



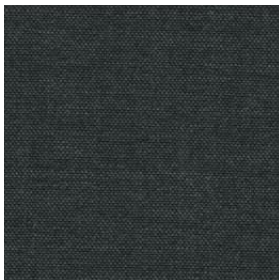
Remix 3
0143



Remix 3
0152



Remix 3
0163



Remix 3
0173



Remix 3
0183



Remix 3
0196



Remix 3
0223



Remix 3
0233



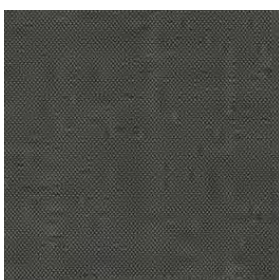
Remix 3
0242



Remix 3
0252



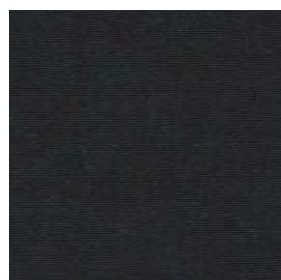
Remix 3
0266



Remix 3
0276



Remix 3
0286

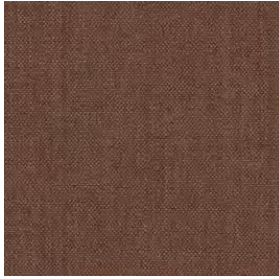


Remix 3
0296

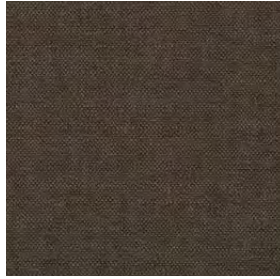


Remix 3
0326

Textiles Remix 3



Remix 3
0346



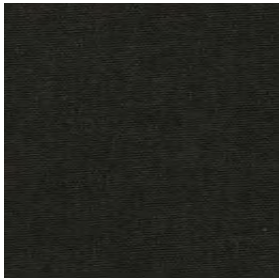
Remix 3
0356



Remix 3
0362



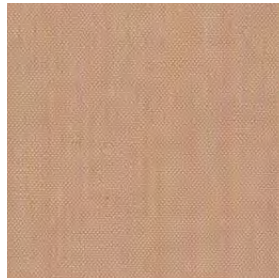
Remix 3
0373



Remix 3
0383



Remix 3
0393



Remix 3
0406



Remix 3
0412



Remix 3
0422



Remix 3
0433



Remix 3
0443



Remix 3
0452



Remix 3
0516



Remix 3
0536



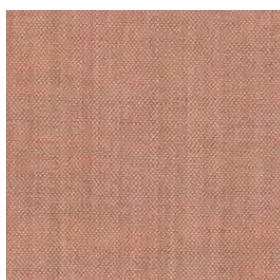
Remix 3
0543



Remix 3
0566



Remix 3
0606



Remix 3
0612



Remix 3
0632

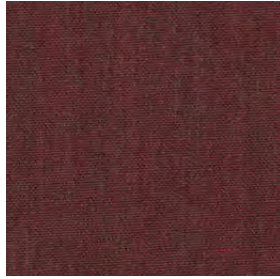


Remix 3
0643

Textiles Remix 3



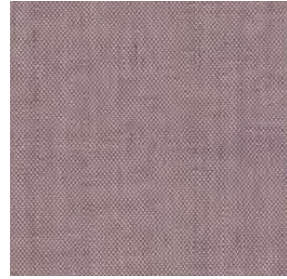
Remix 3
0653



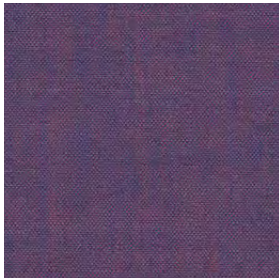
Remix 3
0662



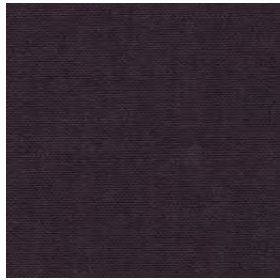
Remix 3
0672



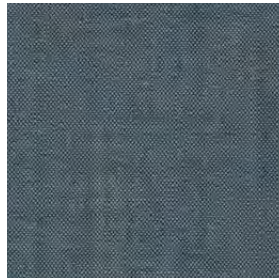
Remix 3
0682



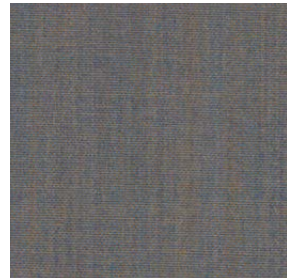
Remix 3
0686



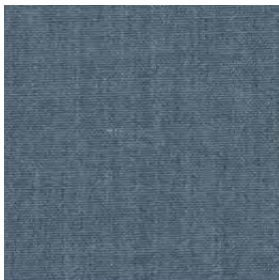
Remix 3
0692



Remix 3
0716



Remix 3
0722



Remix 3
0733



Remix 3
0743



Remix 3
0753



Remix 3
0762



Remix 3
0773



Remix 3
0783



Remix 3
0796



Remix 3
0816



Remix 3
0823



Remix 3
0836



Remix 3
0842



Remix 3
0852

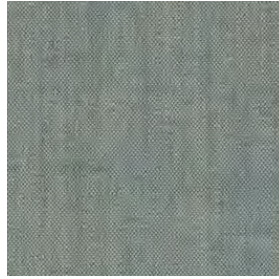
Textiles Remix 3



Remix 3
0866



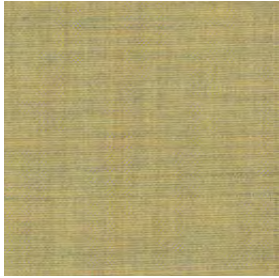
Remix 3
0873



Remix 3
0906



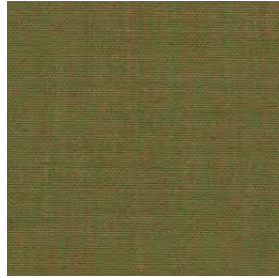
Remix 3
0912



Remix 3
0923



Remix 3
0933



Remix 3
0942



Remix 3
0954



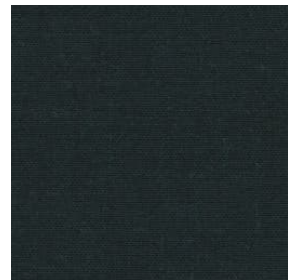
Remix 3
0962



Remix 3
0973



Remix 3
0982



Remix 3
0996

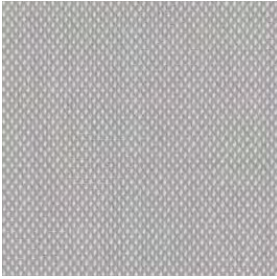
Steelcut Trio 3

The three-dimensional surface of Steelcut Trio resembles small pyramids or steel points. Despite the complexity of the textile's innovative weave, it has a simple, precise expression. Steelcut Trio is yarn-dyed and made from 3 differently coloured yarns.

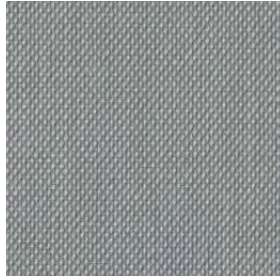
Category:	Kvadrat upholstery
Pattern:	Solid
Composition:	90% new wool worsted 10% nylon
Width:	Approx. 140 cm (Approx. 55")
Weight:	770 g/lin. m (24.84 oz/ly)
Repeat:	Approx. 0/0 cm (Approx. 0"/0")
Durability:	100,000 Martindale
Pilling:	4 (ISO 1-5)
Lightfastness:	6-7

Fire Tests:	AS/NZS 1530.3 • BS 5852 crib 5 with treatment • BS 5852 part 1 • IMO FTP Code 2010 Part 8 • NF D 60 013 • NFPA 260 • SN 198 898 5.3 with treatment • UNI 9175 1IM • US Cal. Bull. 117-2013 • EN 1021-1/2 • ASTM E84 Class B Unadhered • ASTM E84 Class B Adhered • ÖNORM B1/Q1 • AS/NZS 3837 class 2 • GB 50222 B1 with treatment (Chinese)
Fastness to rubbing:	4-5 (Dry) 4-5 (Wet)
Airflow:	910 Pa s/m
Absorption:	0.70/Class C (Absorption flat) 0.95/Class A (Absorption folded)
Seam Slippage:	3.5 mm (warp), 2 mm (weft)

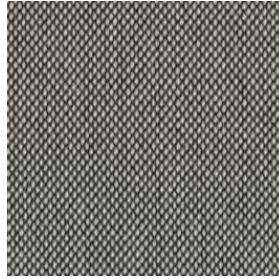
Textiles Steelcut Trio 3



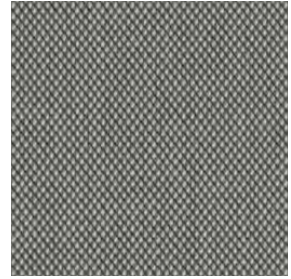
Steelcut Trio 3
0105



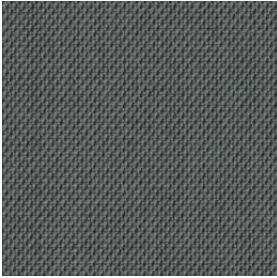
Steelcut Trio 3
0113



Steelcut Trio 3
0124



Steelcut Trio 3
0133



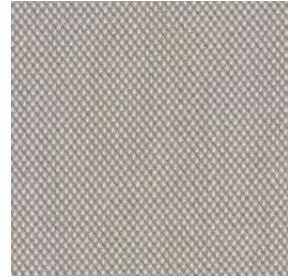
Steelcut Trio 3
0153



Steelcut Trio 3
0176



Steelcut Trio 3
0195



Steelcut Trio 3
0205



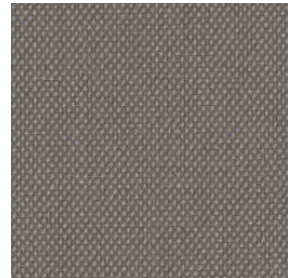
Steelcut Trio 3
0213



Steelcut Trio 3
0226



Steelcut Trio 3
0236



Steelcut Trio 3
0246



Steelcut Trio 3
0253



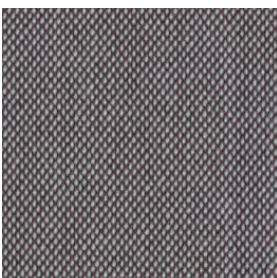
Steelcut Trio 3
0266



Steelcut Trio 3
0276



Steelcut Trio 3
0283



Steelcut Trio 3
0336



Steelcut Trio 3
0376

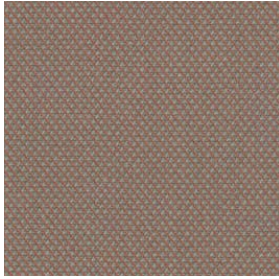


Steelcut Trio 3
0383



Steelcut Trio 3
0416

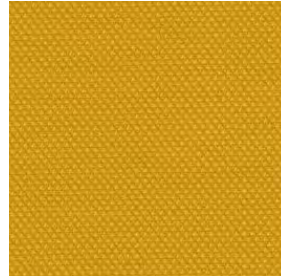
Textiles Steelcut Trio 3



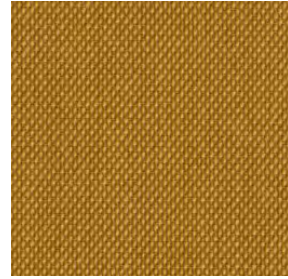
Steelcut Trio 3
0426



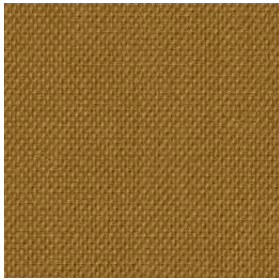
Steelcut Trio 3
0436



Steelcut Trio 3
0446



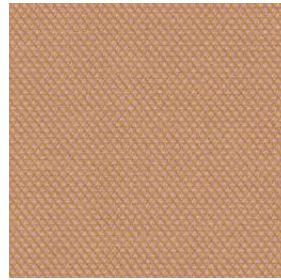
Steelcut Trio 3
0453



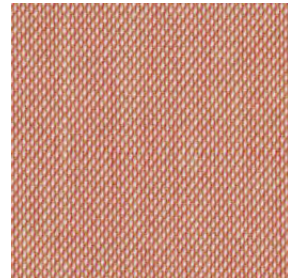
Steelcut Trio 3
0466



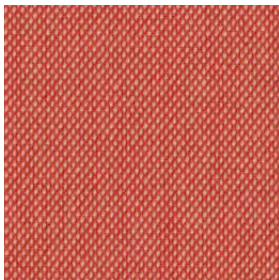
Steelcut Trio 3
0476



Steelcut Trio 3
0506



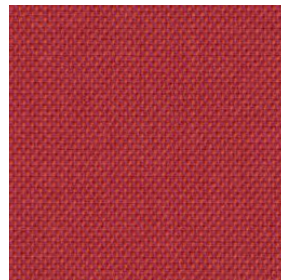
Steelcut Trio 3
0515



Steelcut Trio 3
0526



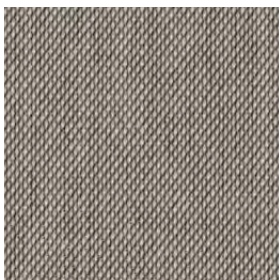
Steelcut Trio 3
0533



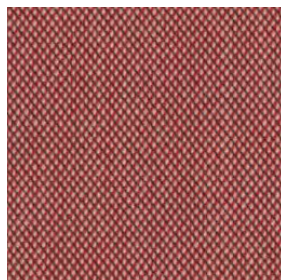
Steelcut Trio 3
0553



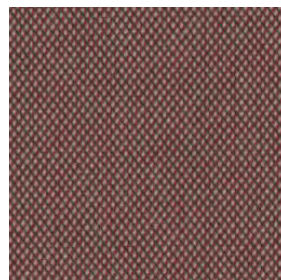
Steelcut Trio 3
0576



Steelcut Trio 3
0616



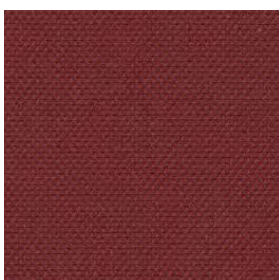
Steelcut Trio 3
0636



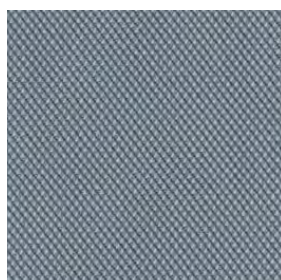
Steelcut Trio 3
0645



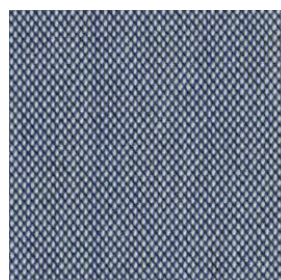
Steelcut Trio 3
0666



Steelcut Trio 3
0686



Steelcut Trio 3
0713



Steelcut Trio 3
0716



Steelcut Trio 3
0746

Textiles Steelcut Trio 3



Steelcut Trio 3
0746



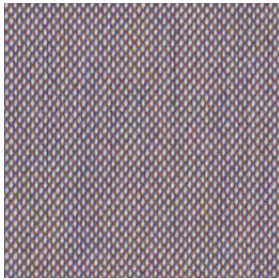
Steelcut Trio 3
0756



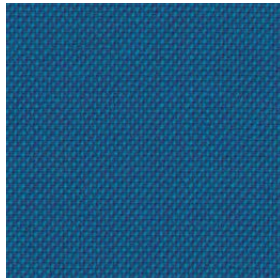
Steelcut Trio 3
0776



Steelcut Trio 3
0796



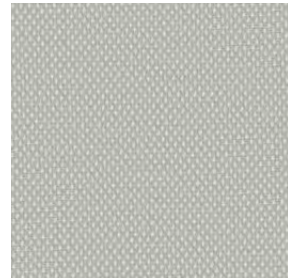
Steelcut Trio 3
0806



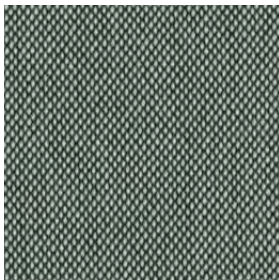
Steelcut Trio 3
0865



Steelcut Trio 3
0883



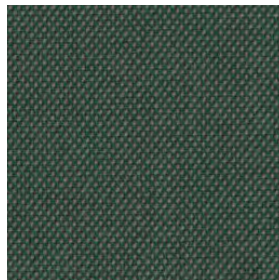
Steelcut Trio 3
0906



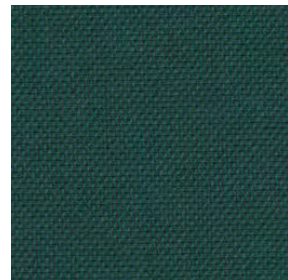
Steelcut Trio 3
0916



Steelcut Trio 3
0946



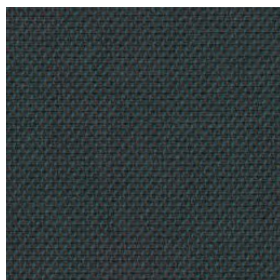
Steelcut Trio 3
0966



Steelcut Trio 3
0976



Steelcut Trio 3
0983



Steelcut Trio 3
0996



Vidar 4

Originally designed by Fanny Aronsen, Vidar has been re-coloured by Raf Simons, with shades ranging from moss green, dark aubergine, ruby red and midnight blue through to brick and earth tones, and easy neutrals.

Tightly woven, without the irregularities of the other bouclé fabrics within this collection, Vidar has an inviting texture, which variously recalls blackberries, orange peel or the comforting close-knit texture of a favourite sweater.

Category: Kvadrat/Raf Simons upholstery
Pattern: Solid
Composition: 94% new wool 6% nylon
Width: Approx. 140 cm (Approx. 55")
Weight: 770 g/lin. m (24.84 oz/ly)
Repeat: Approx. 0/0 cm (Approx. 0"/0")
Durability: 100,000 Martindale
Pilling: 4 (ISO 1-5)
Lightfastness: 7

Fire Tests: BS 5852 crib 5 with treatment • BS 5852 part 1 • IMO FTP Code 2010 Part 8 • NF D 60 013 • NFPA 260 • UNI 9175 1IM • US Cal. Bull. 117-2013 • EN 1021-1/2 • AS/NZS 3837 class 2 • GB 50222 B1 with treatment (Chinese) • SN 198 898 5.3 with treatment • IMO FTP Code 2010 Part 7 with treatment
Fastness to rubbing: 3-4 (Dry) 3 (Wet)
Airflow: 367 Pa s/m
Absorption: 0.55/Class D (Absorption flat)

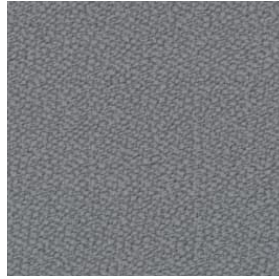
Textiles Vidar 4



Vidar 4
0106



Vidar 4
0123



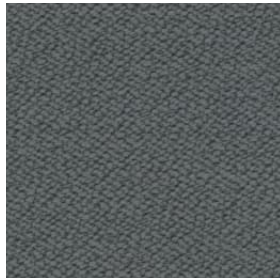
Vidar 4
0133



Vidar 4
0143



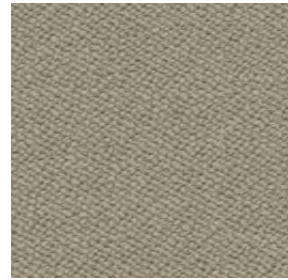
Vidar 4
0146



Vidar 4
0152



Vidar 4
0182



Vidar 4
0222



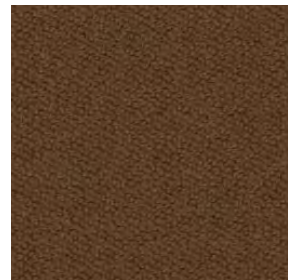
Vidar 4
0323



Vidar 4
0333



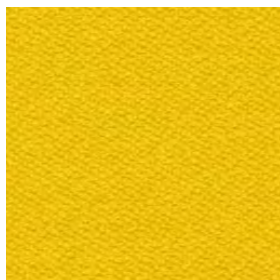
Vidar 4
0353



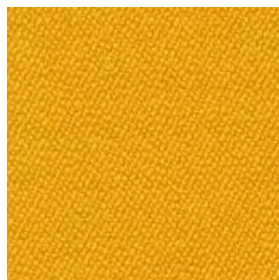
Vidar 4
0363



Vidar 4
0386



Vidar 4
0443



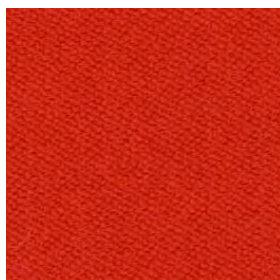
Vidar 4
0456



Vidar 4
0472



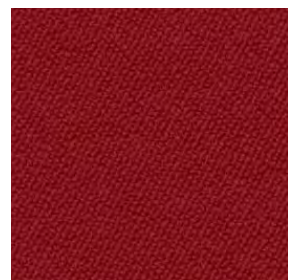
Vidar 4
0526



Vidar 4
0542



Vidar 4
0554

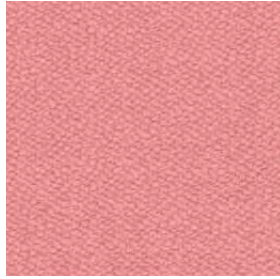


Vidar 4
0556

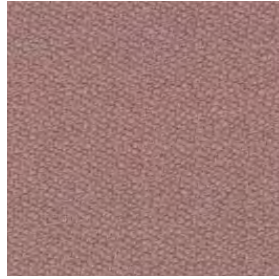
Textiles Vidar 4



Vidar 4
0582



Vidar 4
0622



Vidar 4
0633



Vidar 4
0653



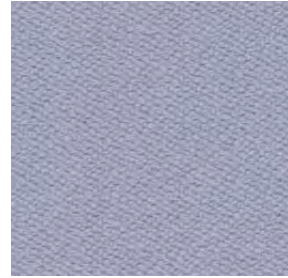
Vidar 4
0656



Vidar 4
0676



Vidar 4
0693



Vidar 4
0723



Vidar 4
0733



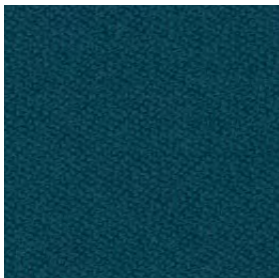
Vidar 4
0743



Vidar 4
0772



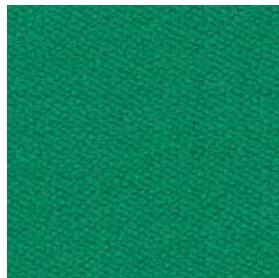
Vidar 4
0786



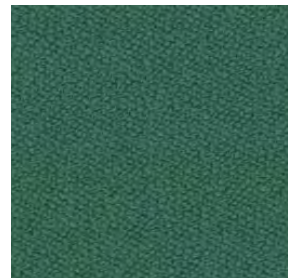
Vidar 4
0872



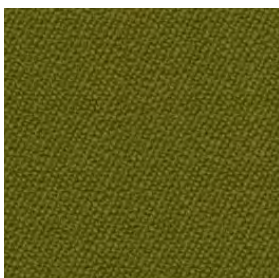
Vidar 4
0913



Vidar 4
0932



Vidar 4
0943



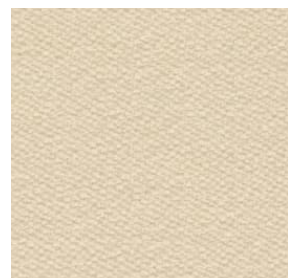
Vidar 4
0956



Vidar 4
0972



Vidar 4
1062



Vidar 4
1511



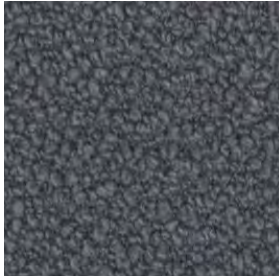
Vidar 4
1880

Elle

A curled bouclé fabric, Elle drapes and curves around furniture like an elegant designer coat. The spun bouclé yarn created by blending wool, viscose and acrylic gives the surface a soft tactility. During the subsequent dyeing the yarns take the colour differently, creating captivating shifts within the same tones.

Category:	Sahco upholstery	Fire Tests:	US Cal. Bull. 117-2013 • BS 5852 crib 5 with treatment • EN 1021-1/2 • BS 5852 part 1 • IMO FTP Code 2010 Part 8
Pattern:	Solid		
Composition:	25% cotton 20% viscose 20% polyacrylic 20% wool 15% polyamide		
Width:	140 cm (55")		
Weight:	900 g/lin. m (29.03 oz/ly)	Fastness to rubbing:	4-5 (Dry) 4 (Wet)
Repeat:	0/0 cm (0"/0")	Seam Slippage:	7 mm (warp), 2 mm (weft)
Durability:	70,000 Martindale		
Pilling:	4-5 (ISO 1-5)		
Lightfastness:	6 (ISO 1-8)		

Textiles Elle



Elle
0150



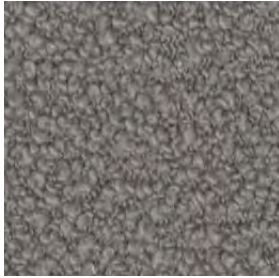
Elle
0180



Elle
0200



Elle
0220



Elle
0230



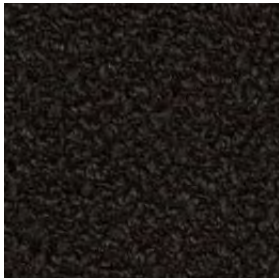
Elle
0280



Elle
0290



Elle
0350



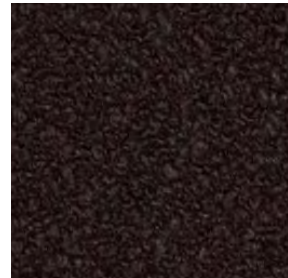
Elle
0390



Elle
0480



Elle
0530



Elle
0680



Elle
0750



Elle
0950

Zero

The influence of Parisian couture clothing can be seen in this elegant and irregular bouclé upholstery textile. The pearl effect yarn is used in both warp and weft giving a luxurious handle and a sophisticated appearance. The sixteen colourways range from tonal through to contrasting 'salt and pepper' combinations.



Category:	Sahco upholstery	Fire Tests:	BS 5852 crib 5 with treatment • EN 1021-1 • US Cal. 117-2013 with Cal. 117 compliant interliner • BS 5852 part 1 with treatment
Composition:	65% cotton 20% polyacrylic 15% polyester		
Width:	140 cm (55")		
Weight:	740 g/lin. m (23.87 oz/ly)		
Repeat:	0/0 cm (0"/0")	Seam Slippage:	2 mm (warp), 2 mm (weft)
Durability:	70,000 Martindale		
Pilling:	5 (ISO 1-5)		
Lightfastness:	5-6 (ISO 1-8)		

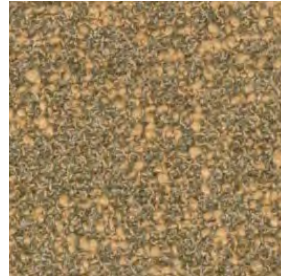
Textiles Zero



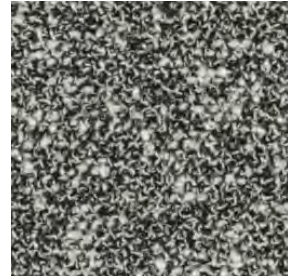
Zero
0001



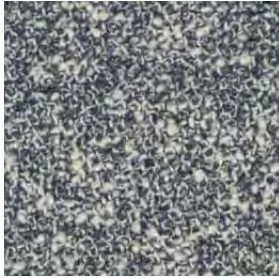
Zero
0002



Zero
0003



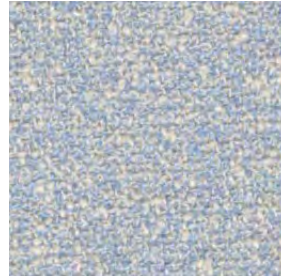
Zero
0004



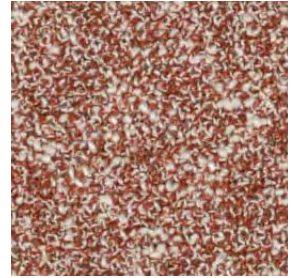
Zero
0005



Zero
0006



Zero
0007



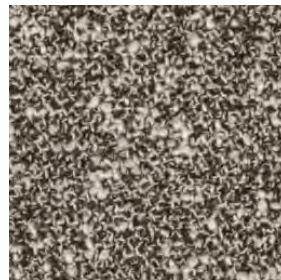
Zero
0008



Zero
0009



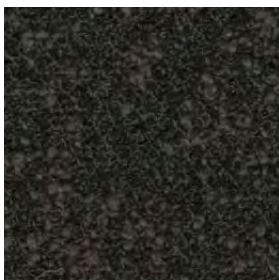
Zero
0010



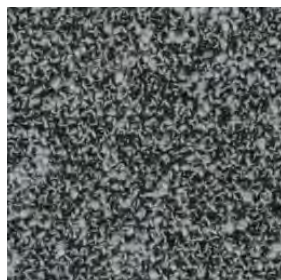
Zero
0011



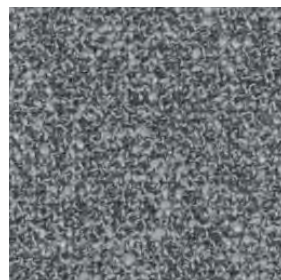
Zero
0012



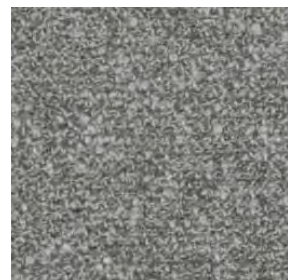
Zero
0013



Zero
0014



Zero
0015



Zero
0016

Leathers

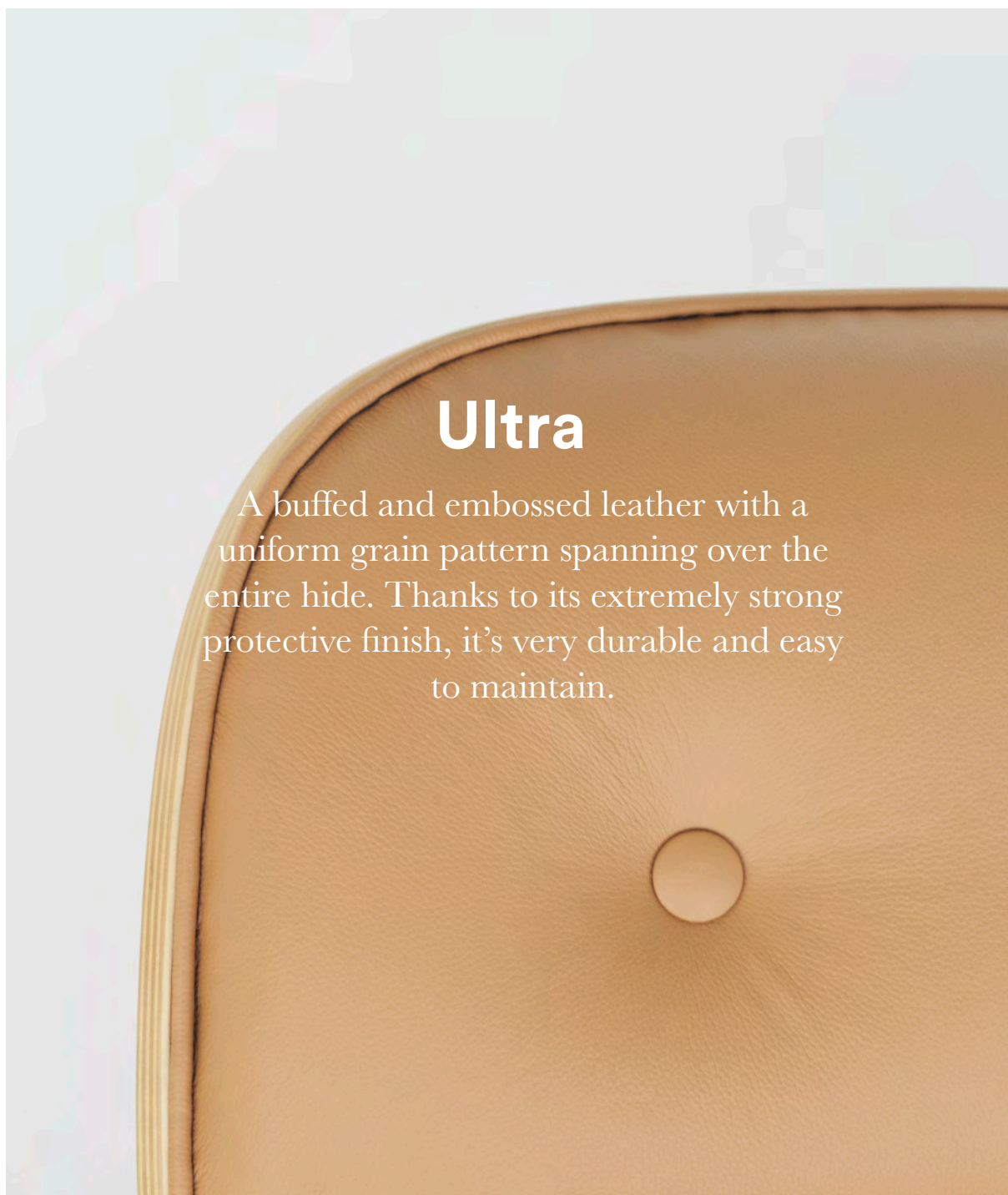
We offer high-quality top grain natural leather from Sørensen Leather for our for our upholstered furniture.

We work with three different styles, each with specific attributes that accommodate different needs.



normann

C O P E N H A G E N

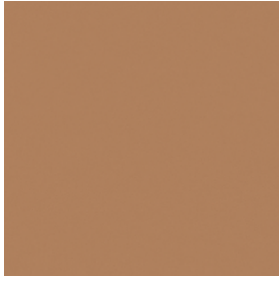


Ultra

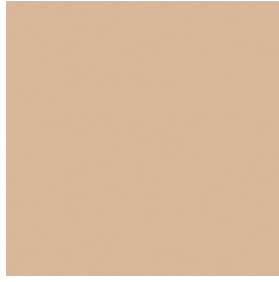
A buffed and embossed leather with a uniform grain pattern spanning over the entire hide. Thanks to its extremely strong protective finish, it's very durable and easy to maintain.

Manufacturer	Sørensen Leather	Color fastness to rubbing	Wet 250 rubs: 4, Dry 500 rubs: 4-5, Perspiration 80 rubs: 4 (DIN EN ISO 11640)
Thickness	0.9 – 1.1 mm	Color fastness to light	6-7 (DIN EN ISO 105-B02)
Origin	Non-European	Flammability test	CA TB 117-2013 – Non-ignition
Finish	Extremely strong surface protection	Cigarette + match	BS EN 1021-1 and 2 – Non-ignition
Tannage	Chrome	Environment	PCP: According to EU Council Directive 76/769/EEC AZO dyes: According to EU Council Directive 76/769/EEC Chrome VI: Our leather does not contain chrome VI REACH: According to European Community Regulation on chemicals and their safe use (EC 1907/2006)
Dye	Water-based aniline dye		

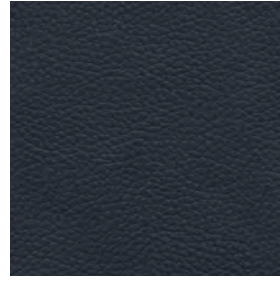
Leathers Ultra



Camel
41571



Honey
41572



Navy
41573



Brandy
41574



Lava
41575



Altweiss
41576



Poppy
41578



Brick
41579



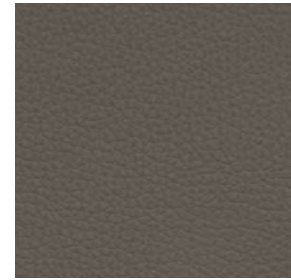
Anthrazit
41580



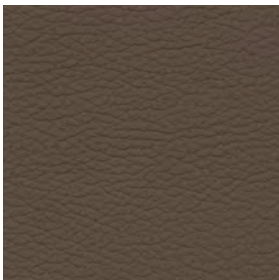
Eggshell
41581



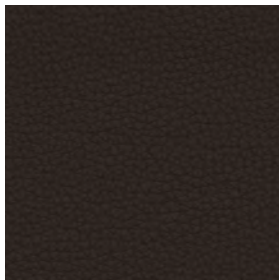
Earth
41584



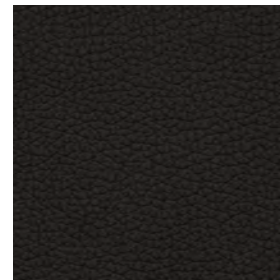
Grey
41585



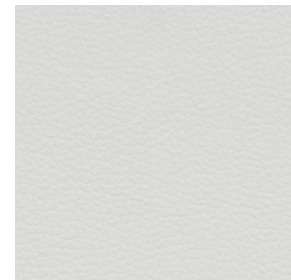
Safari
41586



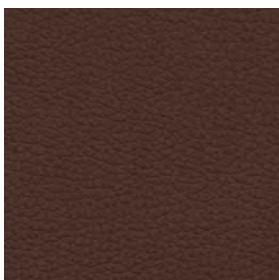
Chocolate
41589



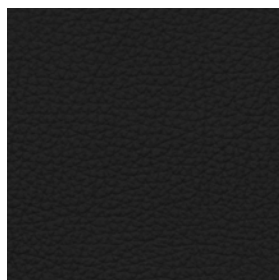
Black Brown
41590



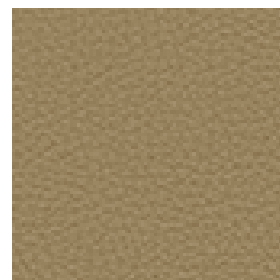
White
41594



Cognac
41598



Black
41599



Leaf
41566

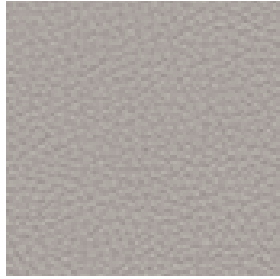


Marsh
41570

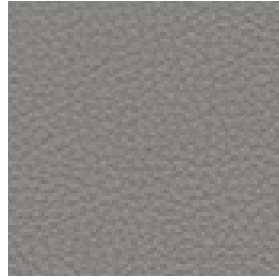
Leathers Ultra



Moss
41569



Oat
41568



Smoke
41567

Leathers Ultra

Hyg swivel 5W gaslift aluminum full upholstery in Sørensøn Ultra leather/Brandy





Spectrum

A soft leather with a subtle texture that looks more uniform, thanks to a light surface finish that works to protect the leather from dirt, stains and any fading resulting from exposure to light.

Only available on Herit chair

Manufacturer	Sørensen Leather	Color fastness to rubbing	Wet 250 rubs: 4-5, Dry 500 rubs: 4, Perspiration 80 rubs: 4 (DIN EN ISO 11640)
Thickness	1.0 – 1.2 mm	Color fastness to light	6 (DIN EN ISO 105-B02)
Origin	European rawhide, typically from Italy, Germany, Austria, Switzerland and Scandinavia	Flammability test	CA TB 117-2013 – Non-ignition
Finish	Light surface protection	Cigarette + match	BS EN 1021-1 and 2 – Non-ignition
Tannage	Chrome	Environment	PCP: According to EU Council Directive 76/769/EEC AZO dyes: According to EU Council Directive 76/769/EEC Chrome VI: Our leather does not contain chrome VI REACH: According to European Community Regulation on chemicals and their safe use (EC 1907/2006)
Dye	Water-based aniline dye		

Leathers Spectrum



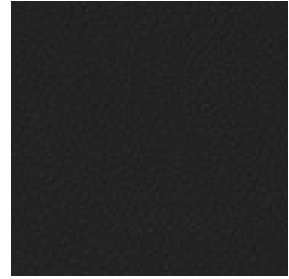
Cloud
30079



Agave
30098



Marble
30105



Black
30114



White
30140

Optimo

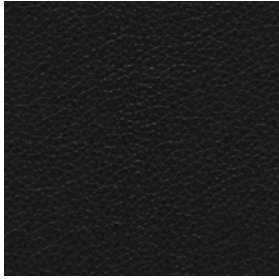
A premium leather that is surprisingly soft yet sturdy, making comfort a pure pleasure in any type of seating solution.

Only available on Rope sofa



Manufacturer	Sørensen Leather	Color fastness to rubbing	Wet 250 rubs: 3-4, Dry 500 rubs: 4, Perspiration 80 rubs: 3-4 (BS EN ISO 11640)
Thickness	1.1 – 1.3 mm	Color fastness to light	5 (BS EN ISO 105-B02)
Origin	European rawhide, typically from Italy, Germany, Austria and Switzerland	Flammability test	TB 117 - 2013
Finish	Extremely strong surface protection	Cigarette + match	BS EN 1021-1 and 2
Tannage	Chrome-free	Environment	PCP: According to EU Council Directive 76/769/EEC AZO dyes: According to EU Council Directive 76/769/EEC Chrome VI: Our leather does not contain chrome VI REACH: According to European Community Regulation on chemicals and their safe use (EC 1907/2006)
Dye	Water-based aniline dye		

Leathers Optimo



Black
41703



Cognac
41704



Dark brown
41705



Grey
41706



Nougat
41707



Brown
41708



White
41710